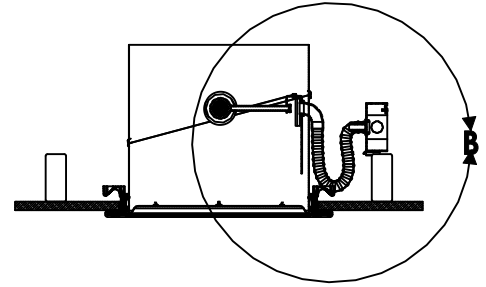
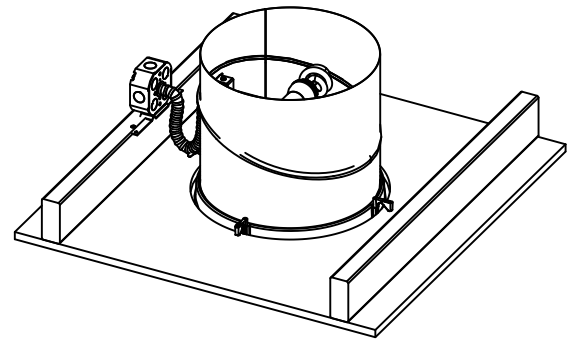
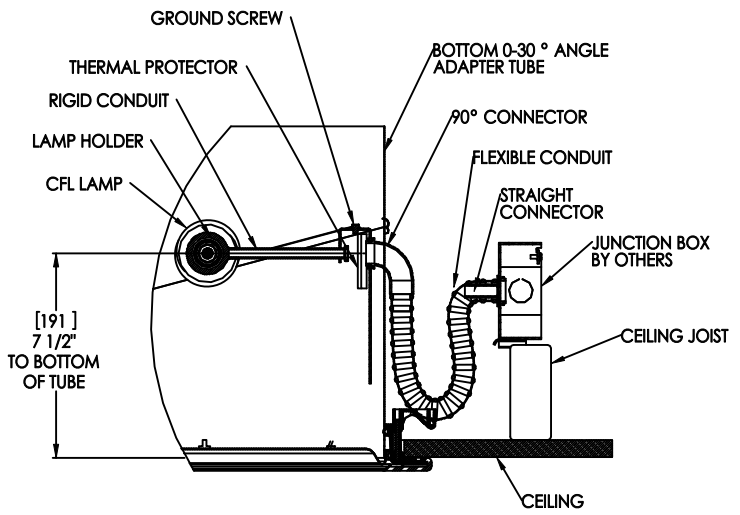
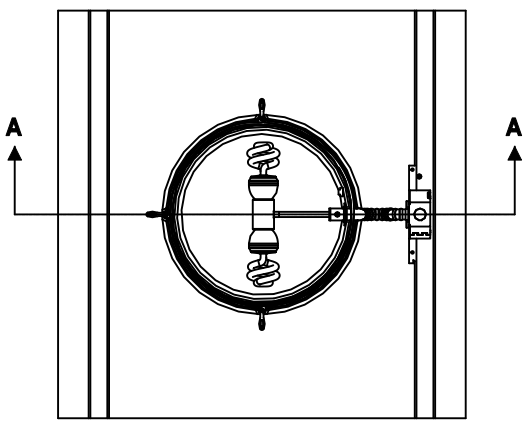


REVISIONS					
REV	ECO	DATE	REVISED	CHECKED	APPROVED
A		10/4/2010			

**SOLATUBE 290 DS  
(14 IN / 350 MM)  
UNIVERSAL LIGHT ADD-ON KIT  
HARD CEILING**



**SECTION A-A**

**DETAIL B  
SCALE 2 : 1**

**NOTES:**

1. STRUCTURAL ELEMENTS (PLYWOOD, RAFTERS, DRYWALL ETC. BY OTHERS & SHOWN FOR REFERENCE ONLY.
2. ALL TUBE JOINTS & SEAMS TAPED WITH 2" FOIL TAPE (NOT SHOWN).
3. DIMENSIONS IN BRACKETS ARE METRIC UNLESS OTHERWISE SPECIFIED.
4. 6" MIN CLEARANCE SHOULD BE MAINTAINED FROM ALL SOLATUBE COMPONENTS AND OTHER PLENUM COMPONENTS.
5. LAMP TYPE: FLUORESCENT, MEDIUM BASE, 23 WATT MAXIMUM, TOTAL MAXIMUM LENGTH 4-3/4" (120 MM)

UNLESS OTHERWISE SPECIFIED:		SOLATUBE INTERNATIONAL, INC. COPYRIGHT 2010 WWW.SOLATUBE.COM		TITLE: <b>SOLATUBE 290 DS LIGHT ADD-ON</b>	
DIMENSION TOLERANCE FRACTIONS ± 1/16" INCH ± .1 MILLIMETER ± .25 ± .1 ± .25 ± .15		DRAWN BY STEVENS	DATE 10/4/10	SIZE	REV
MATERIAL		CHECKED BY	DATE	DWG. NO. <b>WEB-290DS-HC-LIGHT</b>	<b>A</b>
FINISH		APPROVED BY	DATE	SCALE: 1:1	SHEET 1 OF 1
DO NOT SCALE DRAWING					