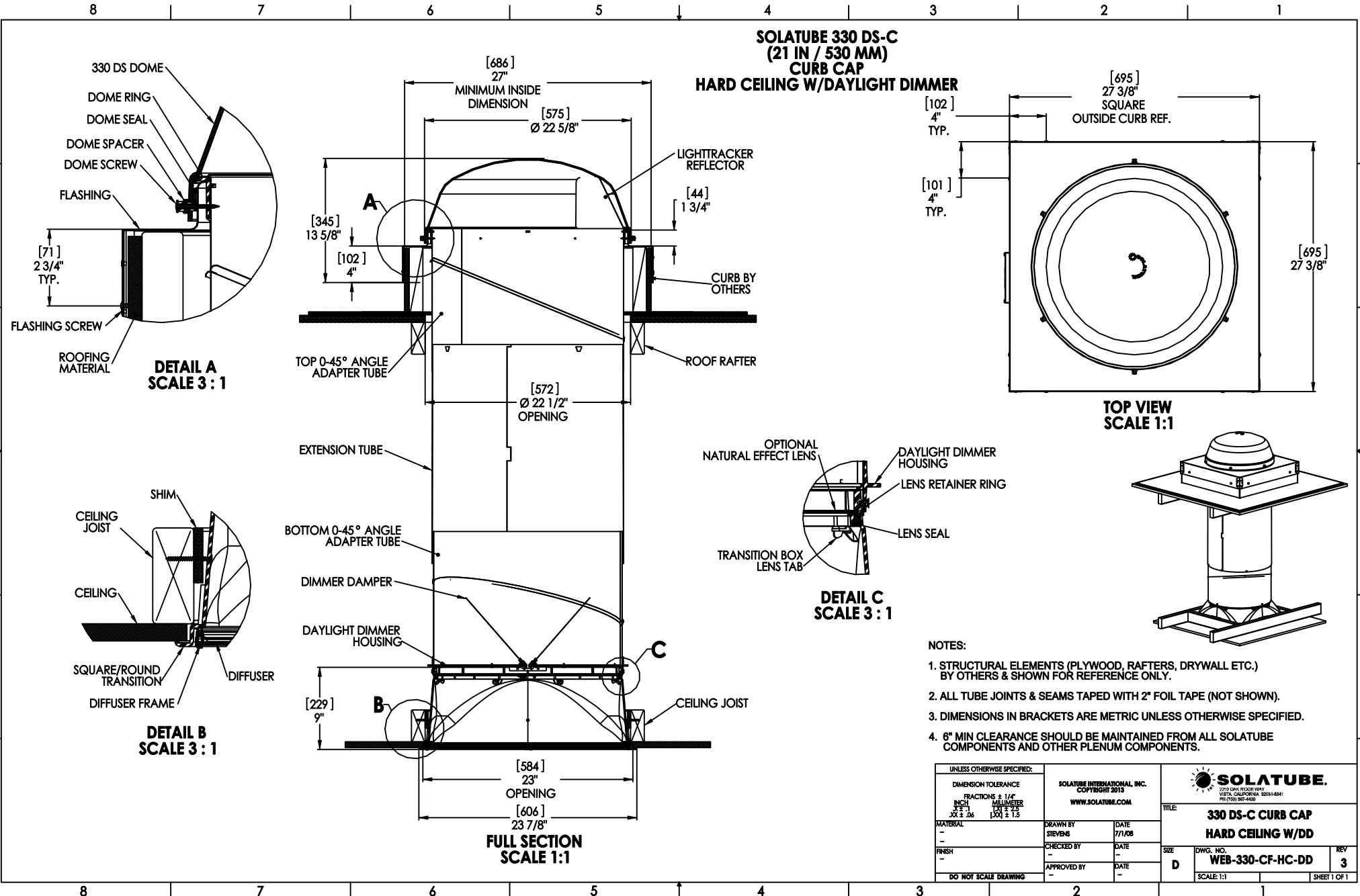


**SOLATUBE 330 DS-C  
(21 IN / 530 MM)  
CURB CAP  
HARD CEILING W/DAYLIGHT DIMMER**



**NOTES:**

1. STRUCTURAL ELEMENTS (PLYWOOD, RAFTERS, DRYWALL ETC.) BY OTHERS & SHOWN FOR REFERENCE ONLY.
2. ALL TUBE JOINTS & SEAMS TAPED WITH 2" FOIL TAPE (NOT SHOWN).
3. DIMENSIONS IN BRACKETS ARE METRIC UNLESS OTHERWISE SPECIFIED.
4. 6" MIN CLEARANCE SHOULD BE MAINTAINED FROM ALL SOLATUBE COMPONENTS AND OTHER PLENUM COMPONENTS.

|   |                  |  |                |  |                                     |
|---|------------------|--|----------------|--|-------------------------------------|
| UNLESS OTHERWISE SPECIFIED:   |                  | SOLATUBE INTERNATIONAL, INC.<br>COPYRIGHT 2013<br>WWW.SOLATUBE.COM |                | <br>2700 OAK RIDGE WAY<br>MESA, CALIFORNIA 90291-8041<br>PH (760) 967-4600 |                                     |
| DIMENSION TOLERANCE<br>FRACTIONS ± 1/16"<br>INCH ± .015<br>MILLIMETER ± .25<br>Ø ± .25<br>[Ø] ± 1.5 |                  | DRAWN BY<br>STEVENS  | DATE<br>7/1/08 | <b>TITLE:</b><br><b>330 DS-C CURB CAP<br/>HARD CEILING W/DD</b>            |                                     |
| MATERIAL<br>-   | CHECKED BY<br>-  | DATE<br>-  | DATE<br>-      | SIZE<br><b>D</b>   | DWG. NO.<br><b>WEB-330-CF-HC-DD</b> |
| FINISH<br>-   | APPROVED BY<br>- | DATE<br>-  | DATE<br>-      | REV<br><b>3</b>  | SCALE: 1:1                          |
| DO NOT SCALE DRAWING  |                  |  |                |  | SHEET 1 OF 1                        |