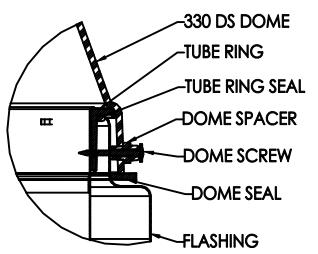
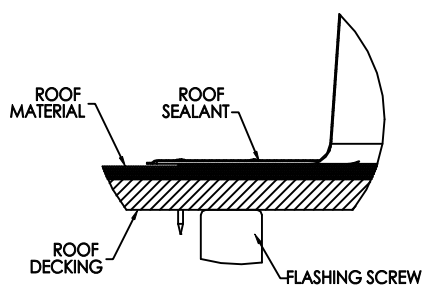


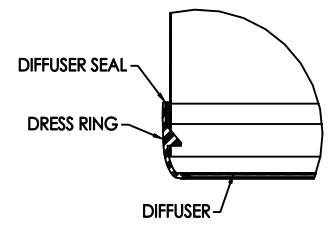
**SOLATUBE 330 DS-O
(21 IN/530 MM)
8" SELF FLASHING OPEN CEILING - ANGLE ADAPTER**



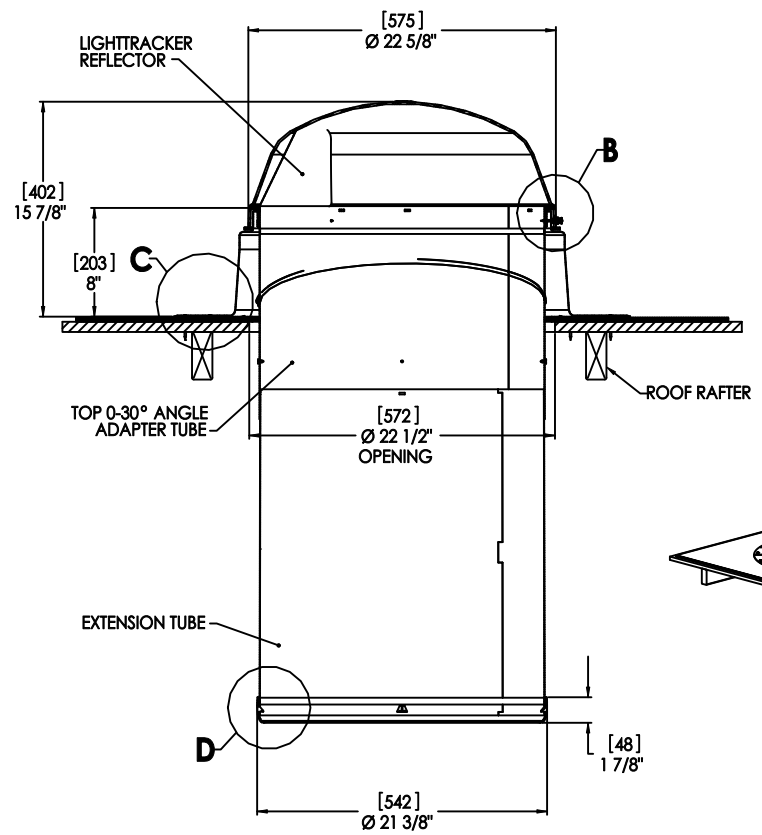
**DETAIL B
SCALE 3 : 1**



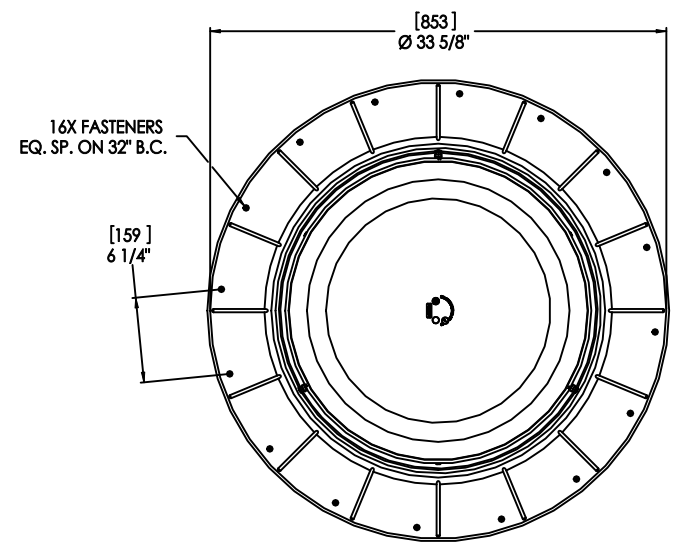
**DETAIL C
SCALE 3 : 1**



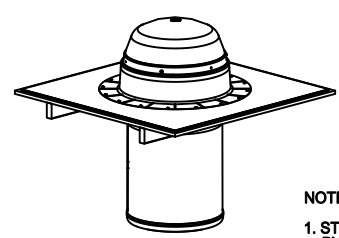
**DETAIL D
SCALE 3 : 1**



**FULL SECTION
SCALE 1:1**



**TOP VIEW
SCALE 1 : 2**



NOTES:

1. STRUCTURAL ELEMENTS (PLYWOOD, RAFTERS, DRYWALL ETC.) BY OTHERS & SHOWN FOR REFERENCE ONLY.
2. ALL TUBE JOINTS & SEAMS TAPED WITH 2" FOIL TAPE (NOT SHOWN).
3. DIMENSIONS IN BRACKETS ARE METRIC UNLESS OTHERWISE SPECIFIED.
4. 6" MIN CLEARANCE SHOULD BE MAINTAINED FROM ALL SOLATUBE COMPONENTS AND OTHER PLENUM COMPONENTS.

UNLESS OTHERWISE SPECIFIED: DIMENSIONS ARE IN INCHES TOLERANCES: ANGULAR: ±0.5° X ± .1 XX ± .02 XXX ± .005		SOLATUBE INTERNATIONAL, INC. COPYRIGHT 2007 WWW.SOLATUBE.COM		 2750 SPAK ROAD NEWY VICTORIA, BRITISH COLUMBIA V8N 1L4 CANADA PH (779) 507-4400	
MATERIAL	-	DRAWN BY	STEVENS	DATE	3/2/09
FINISH	-	CHECKED BY	-	DATE	-
		APPROVED BY	-	DATE	-
DO NOT SCALE DRAWING					
TITLE: 330 DS (21") SELF-FLASHING OPEN CEILING				SIZE	
				DWG. NO.	WEB-330-SF8-OC-AA
				REV	1
				SCALE: 1:1	SHEET 1 OF 1