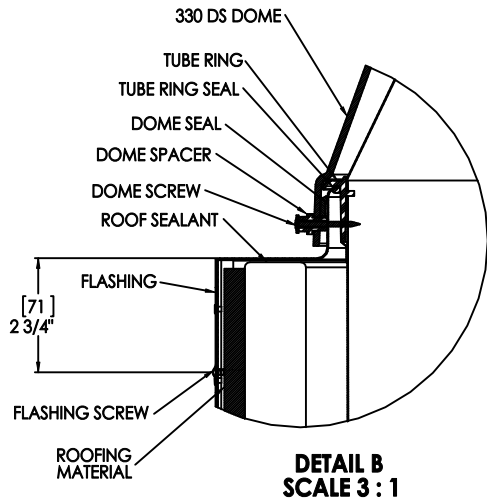
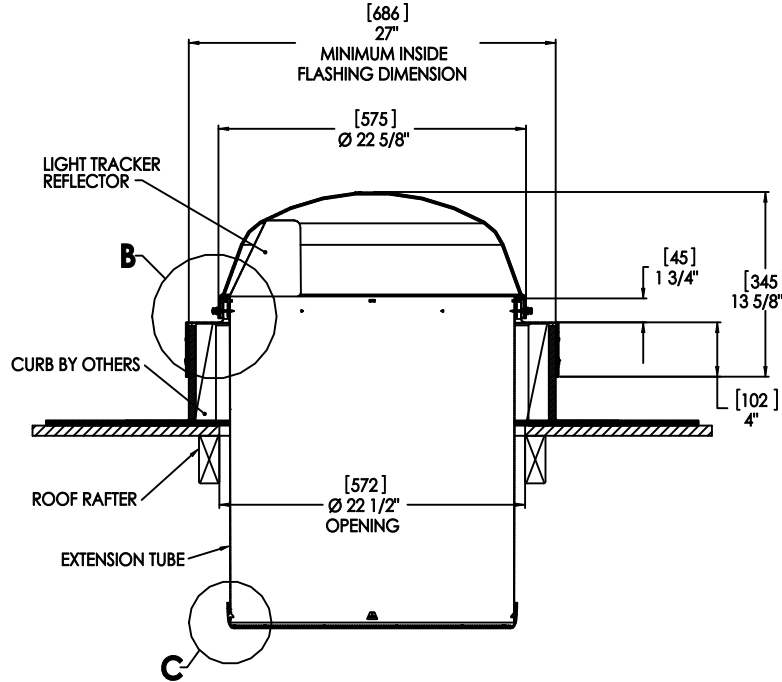


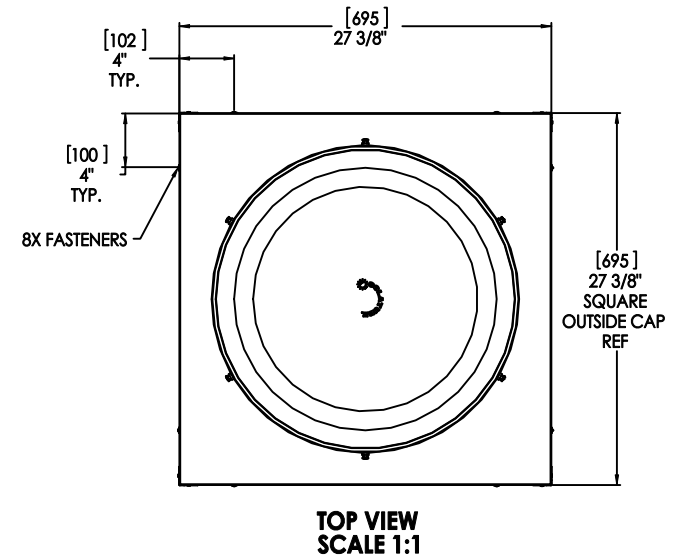
**SOLATUBE 330 DS-O
(21 IN/530 MM)
CURB CAP OPEN CEILING - NO ANGLE ADAPTER**



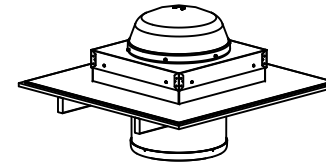
**DETAIL B
SCALE 3:1**



**FULL SECTION
SCALE 1:1**



**TOP VIEW
SCALE 1:1**



NOTES:

1. STRUCTURAL ELEMENTS (PLYWOOD, RAFTERS, DRYWALL ETC.) BY OTHERS & SHOWN FOR REFERENCE ONLY.
2. ALL TUBE JOINTS & SEAMS TAPED WITH 2" FOIL TAPE (NOT SHOWN).
3. DIMENSIONS IN BRACKETS ARE METRIC UNLESS OTHERWISE SPECIFIED.
4. 6" MIN CLEARANCE SHOULD BE MAINTAINED FROM ALL SOLATUBE COMPONENTS AND OTHER PLENUM COMPONENTS.

| | | | | | |
|--|--|--|--|--|-----|
| UNLESS OTHERWISE SPECIFIED: | | SOLATUBE INTERNATIONAL, INC. COPYRIGHT 2013 WWW.SOLATUBE.COM | | 2700 OAK RIDGE WAY MESA, CALIFORNIA 90291-8041 PH (760) 507-4600 | |
| DIMENSION TOLERANCE FRACTIONS ± 1/16" INCH ± .1 MILLIMETER ± .25 DEC ± .25 (20) ± 1.5 | | DRAWN BY STEVENS | | DATE 3/2/09 | |
| MATERIAL - | | CHECKED BY - | | DATE - | |
| FINISH - | | APPROVED BY - | | DATE - | |
| DO NOT SCALE DRAWING | | 2 | | - | |
| TITLE: 330 DS (21") CURB CAP OPEN CEILING | | | | SIZE | REV |
| DWG. NO. WEB-330-CF-OC-NA | | | | SCALE: 1:1 | 2 |
| SHEET 1 OF 1 | | | | | |