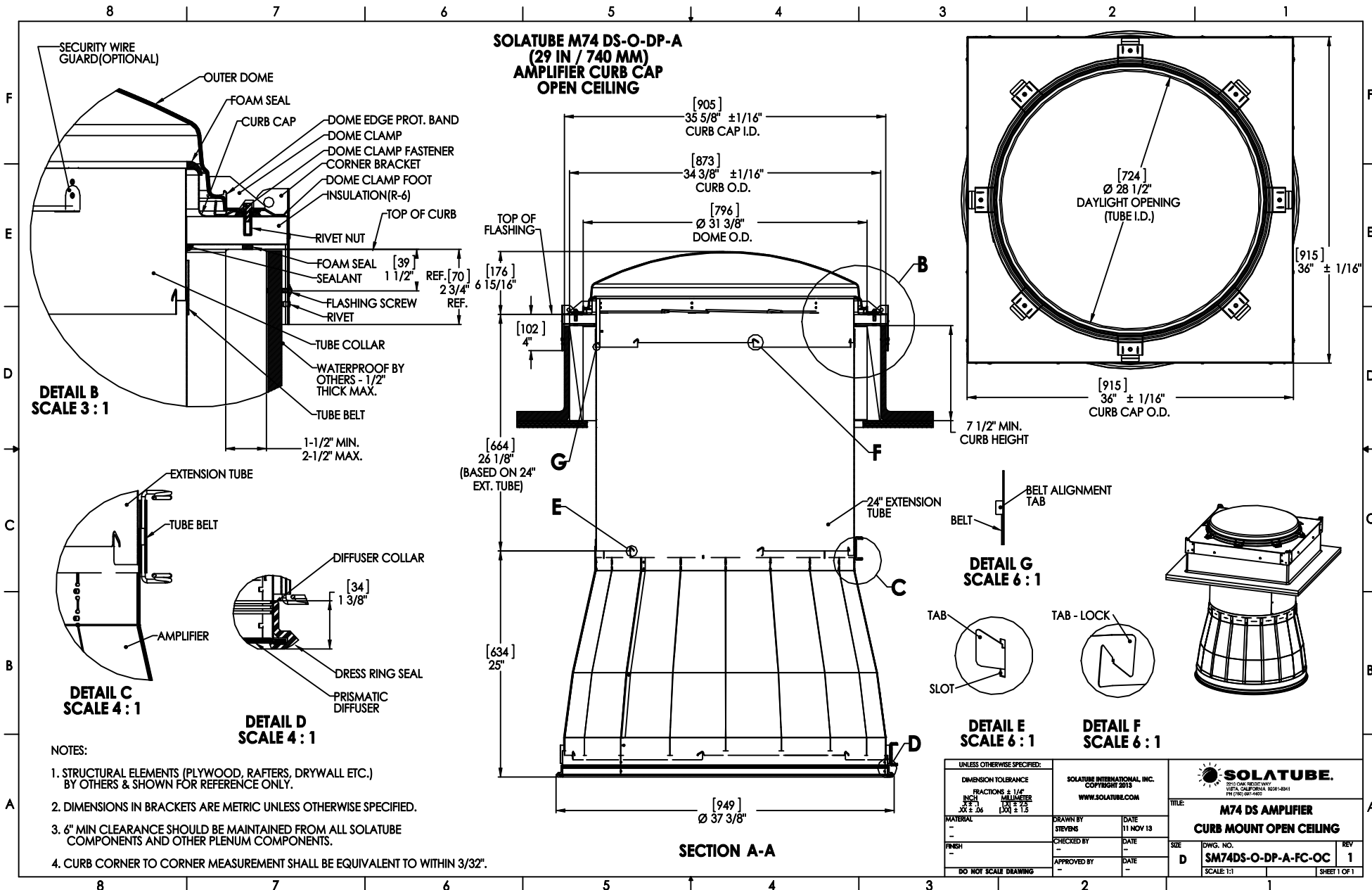
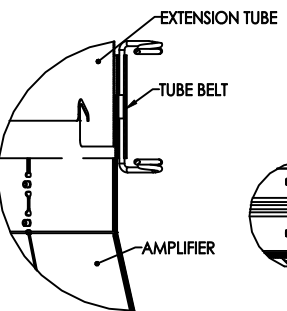


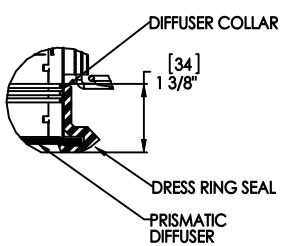
**SOLATUBE M74 DS-O-DP-A
(29 IN / 740 MM)
AMPLIFIER CURB CAP
OPEN CEILING**



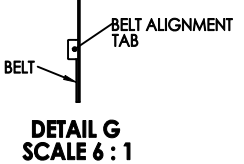
**DETAIL B
SCALE 3 : 1**



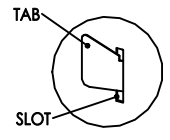
**DETAIL C
SCALE 4 : 1**



**DETAIL D
SCALE 4 : 1**



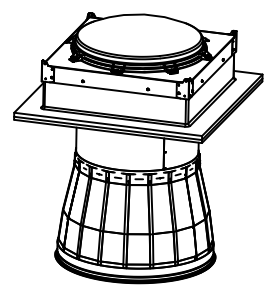
**DETAIL G
SCALE 6 : 1**



**DETAIL E
SCALE 6 : 1**



**DETAIL F
SCALE 6 : 1**



- NOTES:**
1. STRUCTURAL ELEMENTS (PLYWOOD, RAFTERS, DRYWALL ETC.) BY OTHERS & SHOWN FOR REFERENCE ONLY.
 2. DIMENSIONS IN BRACKETS ARE METRIC UNLESS OTHERWISE SPECIFIED.
 3. 6" MIN CLEARANCE SHOULD BE MAINTAINED FROM ALL SOLATUBE COMPONENTS AND OTHER PLENUM COMPONENTS.
 4. CURB CORNER TO CORNER MEASUREMENT SHALL BE EQUIVALENT TO WITHIN 3/32".

UNLESS OTHERWISE SPECIFIED:		SOLATUBE INTERNATIONAL, INC. COPYRIGHT 2013 WWW.SOLATUBE.COM			
DIMENSION TOLERANCE FRACTIONS ± 1/16" INCH ± 0.1 MILLIMETER ± 0.25		DRAWN BY STEVENS		DATE 11 NOV 13	
MATERIAL FINISH		CHECKED BY		DATE	
DO NOT SCALE DRAWING		APPROVED BY		DATE	
TITLE M74 DS AMPLIFIER CURB MOUNT OPEN CEILING				SIZE D DWG. NO. SM74DS-O-DP-A-FC-OC SCALE: 1:1	
REV 1				SHEET 1 OF 1	