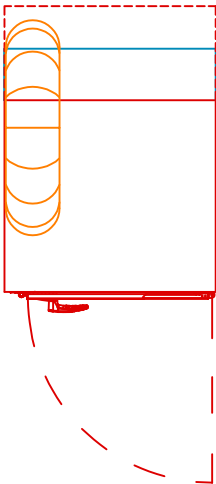
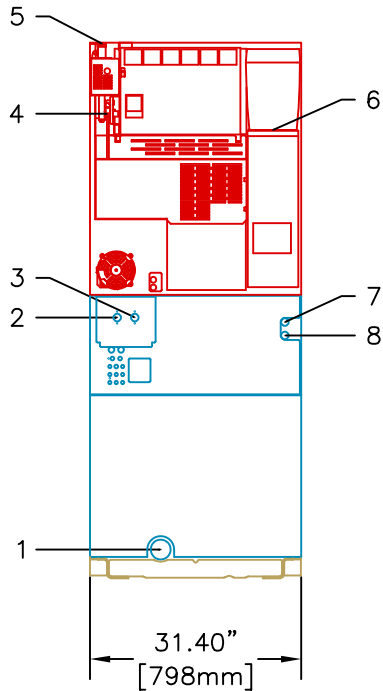


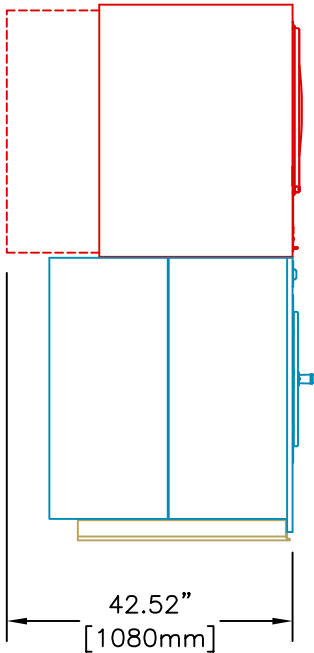
LEGEND:	
1: 3" DRAIN OUTLET	6: 8" EXHAUST OUTLET
2: 1.2" HOT FILL VALVE	7: 1.313" ELETRICAL
3: 1.2" COLD FILL VALVE	8: 1.062" ELECTRICAL
4: 0.875" ELECTRICAL	
5: 1/2 NPT GAS INLET	



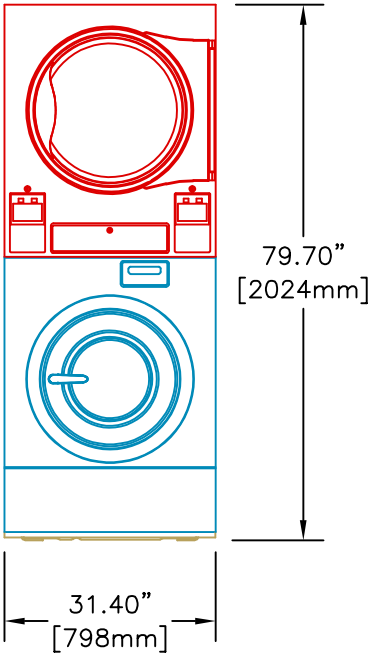
PLAN VIEW



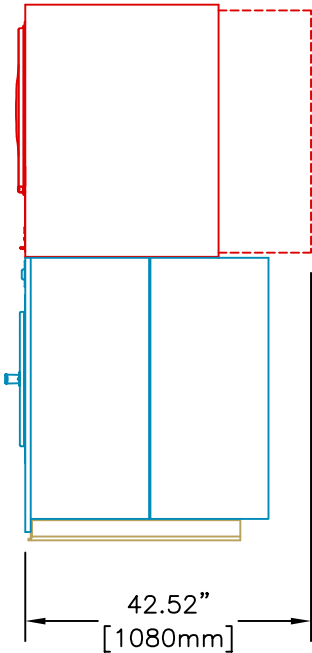
REAR VIEW



LEFT SIDE VIEW



FRONT VIEW



RIGHT SIDE VIEW

30 LB. STACK WASHER-EXTRACTOR
/ TUMBLE DRYER (SST30)



Equipment specifications are subject to change without notice. Please use this drawing along with the installation manuals for updated equipment installation requirements.

KRP	CAD BLOCK	23-Jun-22
Drawn by	Description	Date