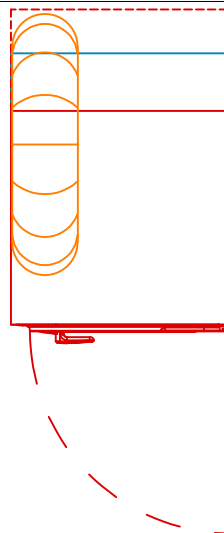
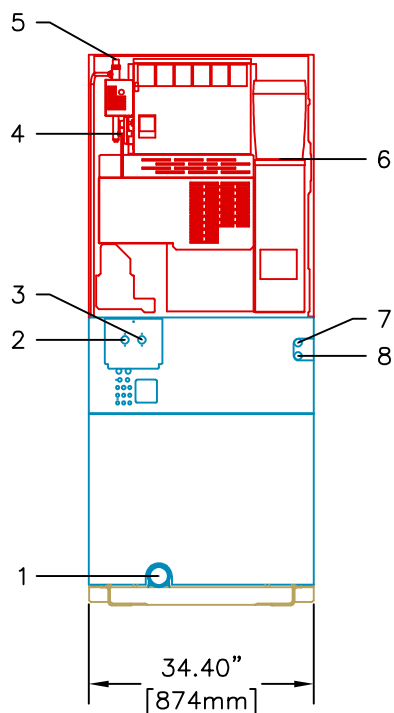


LEGEND:

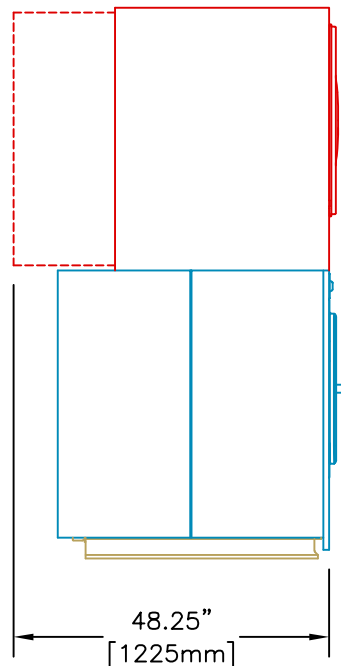
1: 3" DRAIN OUTLET	6: 10" EXHAUST OUTLET
2: 1.2" HOT FILL VALVE	7: 1.313" ELECTRICAL
3: 1.2" COLD FILL VALVE	8: 1.062" ELECTRICAL
4: 0.875" ELECTRICAL	
5: 1/2 NPT GAS INLET	



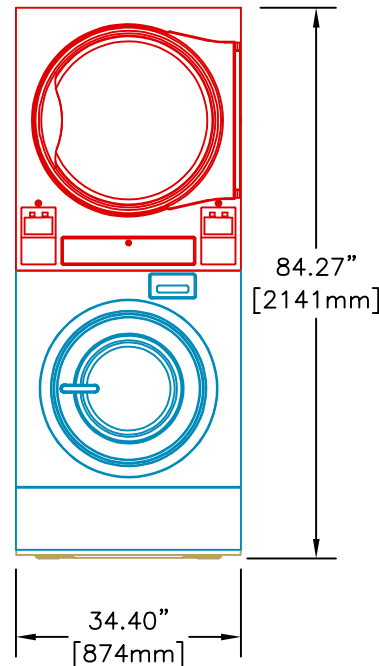
PLAN VIEW



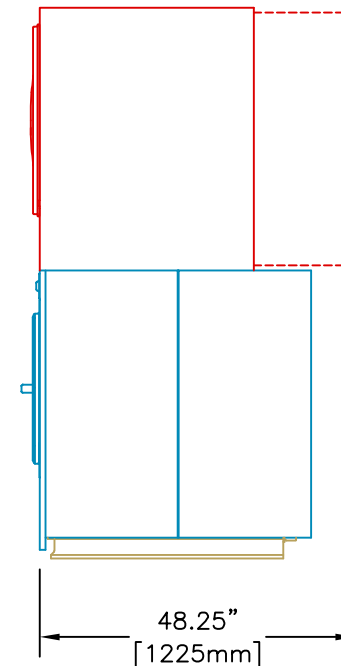
REAR VIEW



LEFT SIDE VIEW



FRONT VIEW



RIGHT SIDE VIEW

50 LB. STACK WASHER-EXTRACTOR / TUMBLE DRYER (SST50)



Equipment specifications are subject to change without notice. Please use this drawing along with the installation manuals for updated equipment installation requirements.

KRP	CAD BLOCK	23-Jun-22
Drawn by	Description	Date