

CONFIDENTIAL

SLHDE- SLIDING HATCH

STRUCTURAL OPENING: 72" X 72" (1829mm X 1829mm)

MATERIAL: ALUMINIUM
INSULATION: 2" (50mm) POLYISOCYANURATE
(U-VALUE: 0.43W/m²K) TO LID ONLY

ELECTRICAL OPERATION

FINISH: AS STANDARD
(RAL 9010 INTERNAL, RAL 7016 EXTERNAL)

APPROX. WEIGHT: 329.8kg

SECTION B-B

FIXED RAIL EXTENSIONS
TO BE FITTED TO FRAME
ON SITE
HEIGHT OF SUPPORTS
CAN BE CHANGED TO
SUIT ON SITE KERB

ENCASED
MOTOR

HATCH SITS ON
DOUBLE SEALS
WHEN CLOSED

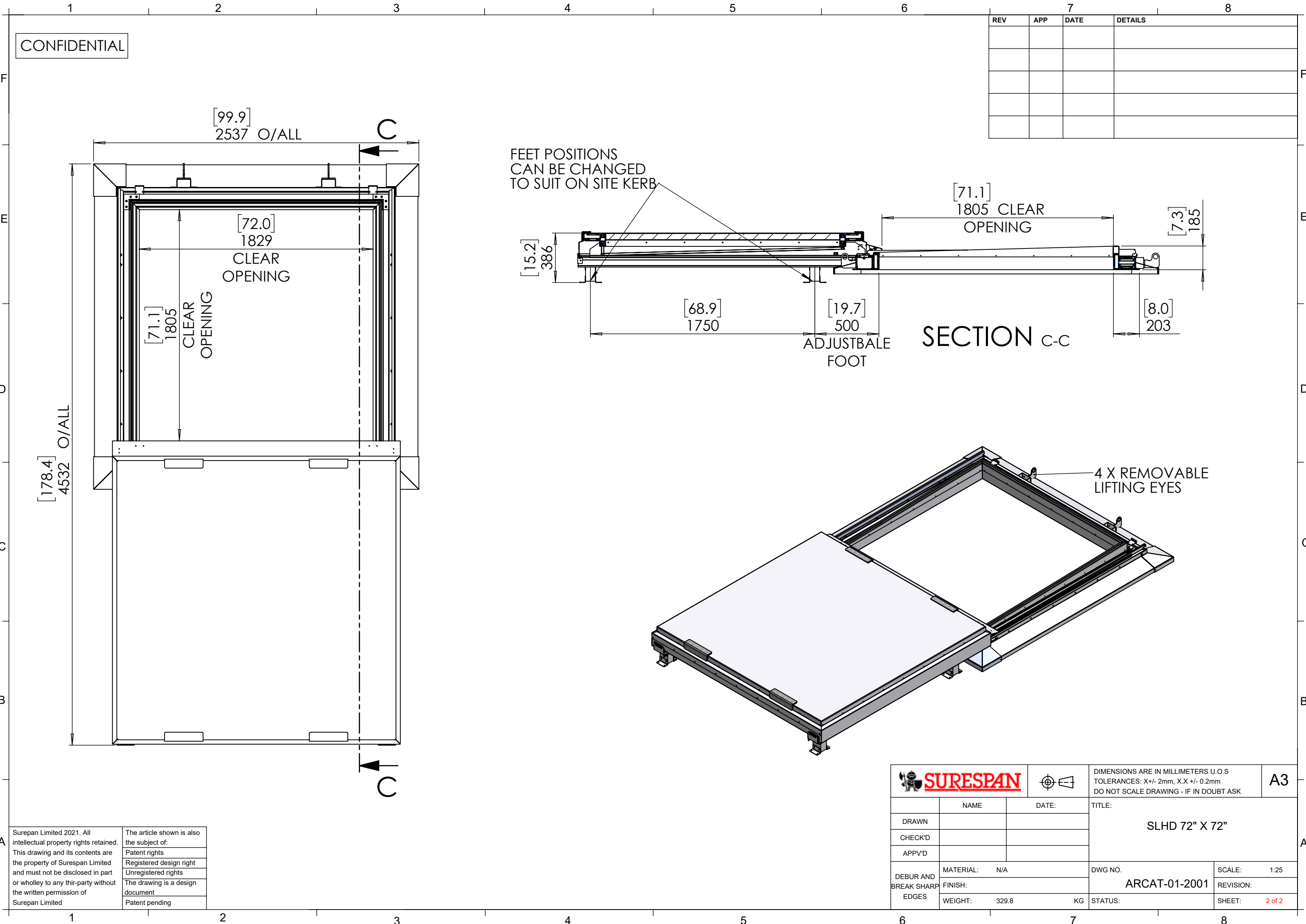
SECTION A-A

SKIRT DIMENSIONS CAN
BE CHANGED TO SUIT
ON SITE KERB WIDTH

Surespan Limited 2021. All intellectual property rights retained. This drawing and its contents are the property of Surespan Limited and must not be disclosed in part or wholly to any third-party without the written permission of Surespan Limited

The article shown is also the subject of:
Patent rights
Registered design right
Unregistered rights
The drawing is a design document
Patent pending

			DIMENSIONS ARE IN MILLIMETERS U.O.S TOLERANCES: X +/- 2mm, X.X +/- 0.2mm DO NOT SCALE DRAWING - IF IN DOUBT ASK		A3
DRAWN	NAME	DATE:	TITLE: SLHD 72" X 72"		
CHECK'D					
APPV'D					
DEBUR AND BREAK SHARP EDGES	MATERIAL:	N/A	DWG NO.	SCALE:	1:30
	FINISH:		ARCAT-01-2001		REVISION:
	WEIGHT:	329.8	KG	STATUS:	SHEET: 1 of 2



CONFIDENTIAL

REV	APP	DATE	DETAILS


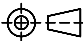
FEET POSITIONS
CAN BE CHANGED
TO SUIT ON SITE KERB

SECTION C-C

4 X REMOVABLE
LIFTING EYES

Surepan Limited 2021. All intellectual property rights retained. This drawing and its contents are the property of Surespan Limited and must not be disclosed in part or wholly to any third-party without the written permission of Surespan Limited

The article shown is also the subject of:
Patent rights
Registered design right
Unregistered rights
The drawing is a design document
Patent pending

 SURESPAN			DIMENSIONS ARE IN MILLIMETERS U.O.S TOLERANCES: X +/- 2mm, X.X +/- 0.2mm DO NOT SCALE DRAWING - IF IN DOUBT ASK		A3
	NAME	DATE:		TITLE: SLHD 72" X 72"	
DRAWN					
CHECK'D					
APPV'D					
DEBUR AND BREAK SHARP EDGES	MATERIAL:	N/A		DWG NO.	SCALE: 1:25
	FINISH:			ARCAT-01-2001	REVISION:
	WEIGHT: 329.8 KG		STATUS:		SHEET: 2 of 2