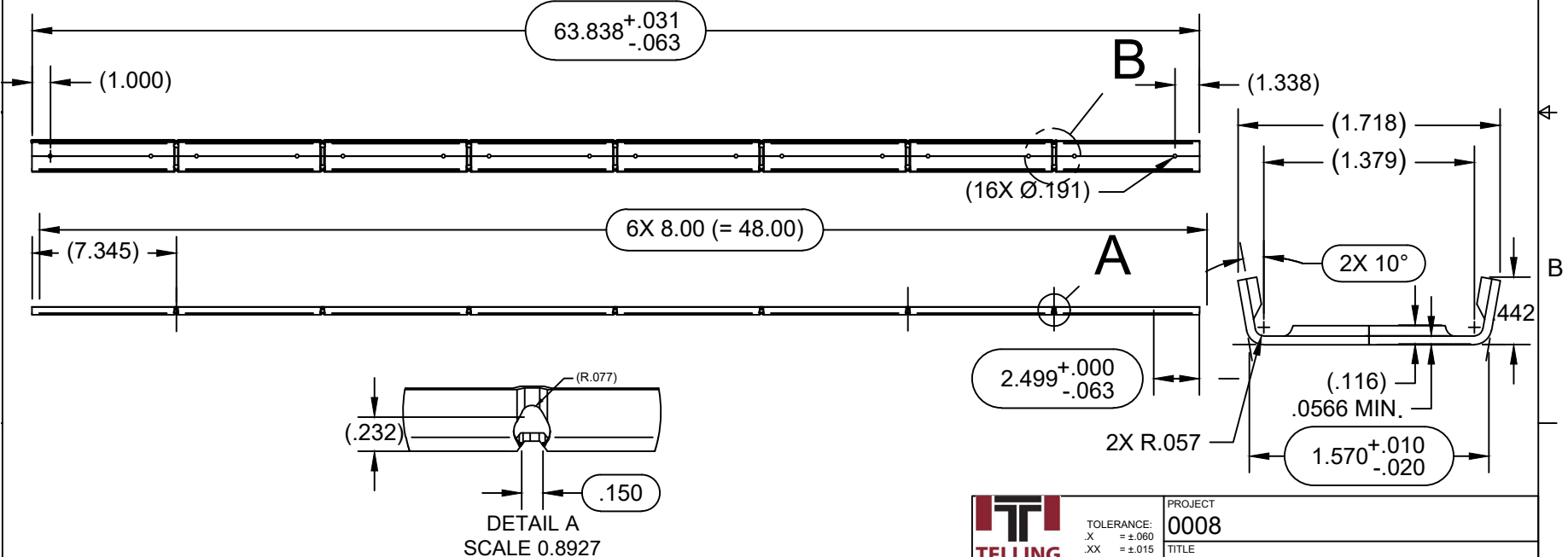
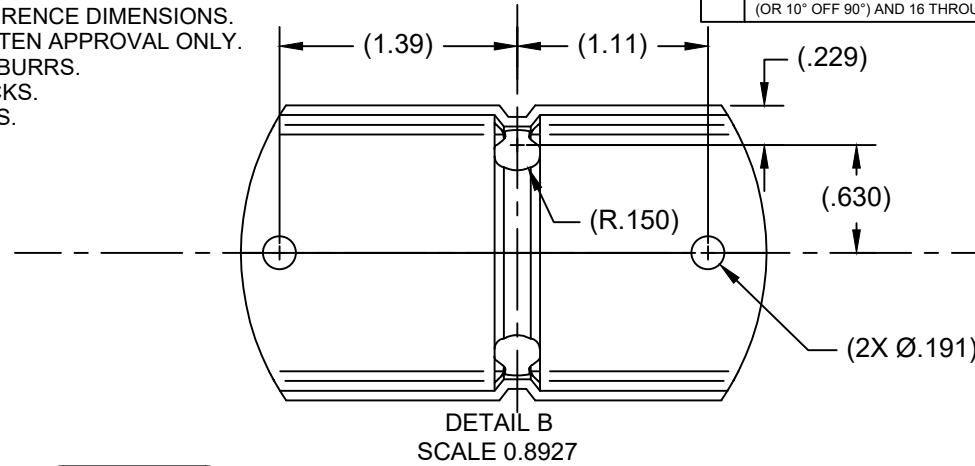


NOTES:

1. ALL DIMENSIONS ARE IN INCHES, UNLESS SPECIFIED OTHERWISE.
2. DIMENSIONS IN PARATHENSIS REPRESENT REFERENCE DIMENSIONS.
3. MATERIAL SUBSTITUTIONS ALLOWED WITH WRITTEN APPROVAL ONLY.
4. BREAK ALL SHARP CORNERS AND REMOVE ANY BURRS.
5. PART TO BE FREE OF ANY VISIBLE STRESS CRACKS.
6. CRC DRAWN TO .0566" MIN. MATERIAL THICKNESS.
7. CRC IS SYMMETRICAL ABOUT CENTER LINE.
9. REFER TO SHEET NO. 2 FOR CRC FLAT DETAILS.
- 10.* REPRESENTS VIRTUAL SHARP.

REVISION			
REV	DESCRIPTION	DATE	APVL
A	CHANGE BEND ANGLES FROM 92° TO 100° (OR 10° OFF 90°) AND 16 THROUGH HOLES.	2/18/19	C.HABA



THE DRAWING AND ALL OTHER INFORMATION CONTAINED HEREIN ARE THE CONFIDENTIAL PROPRIETARY PROPERTY OF TELLING INDUSTRIES. THIS DRAWING INFORMATION, IN WHOLE OR IN PART, MAY NOT BE COPIED IN ANY MANNER OR DISCLOSED TO ANYONE WITHOUT PRIOR WRITTEN CONSENT OF TELLING INDUSTRIES. DISCLOSURE OF ANY DRAWING OR INFORMATION IS INTENDED NOT TO AND SHALL NOT OPERATE AS A LICENSE OR AUTHORIZATION TO USE IT FOR ANY PURPOSE WITHOUT SPECIFIC WRITTEN CONSENT OF TELLING INDUSTRIES.

<p>TOLERANCE: .X = ±.060 .XX = ±.015 .XXX = ±.005 ANGLES = ±1°</p> <p>MATERIAL: .0566" MIN. SS GRADE 33 FINISH: G60, PER ASTM A653</p>		PROJECT 0008	
		TITLE COLD ROLLED CHANNEL (CRC) FOR 16" & 24" STUD SPACING	
APPROVED C.HABA	11/11/18	SIZE C	CODE
CHECKED C.HABA	11/11/18	DWG NO CRC_B_0008	REV A
DRAWN S.LEECH	11/11/18	SCALE 1:4	WEIGHT
		SHEET 1/2	