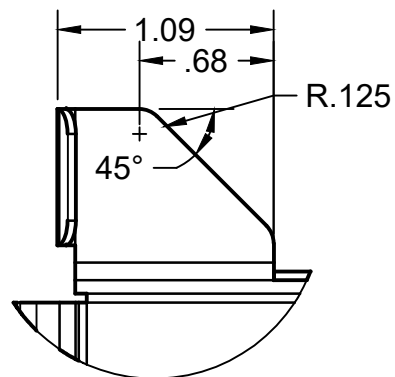


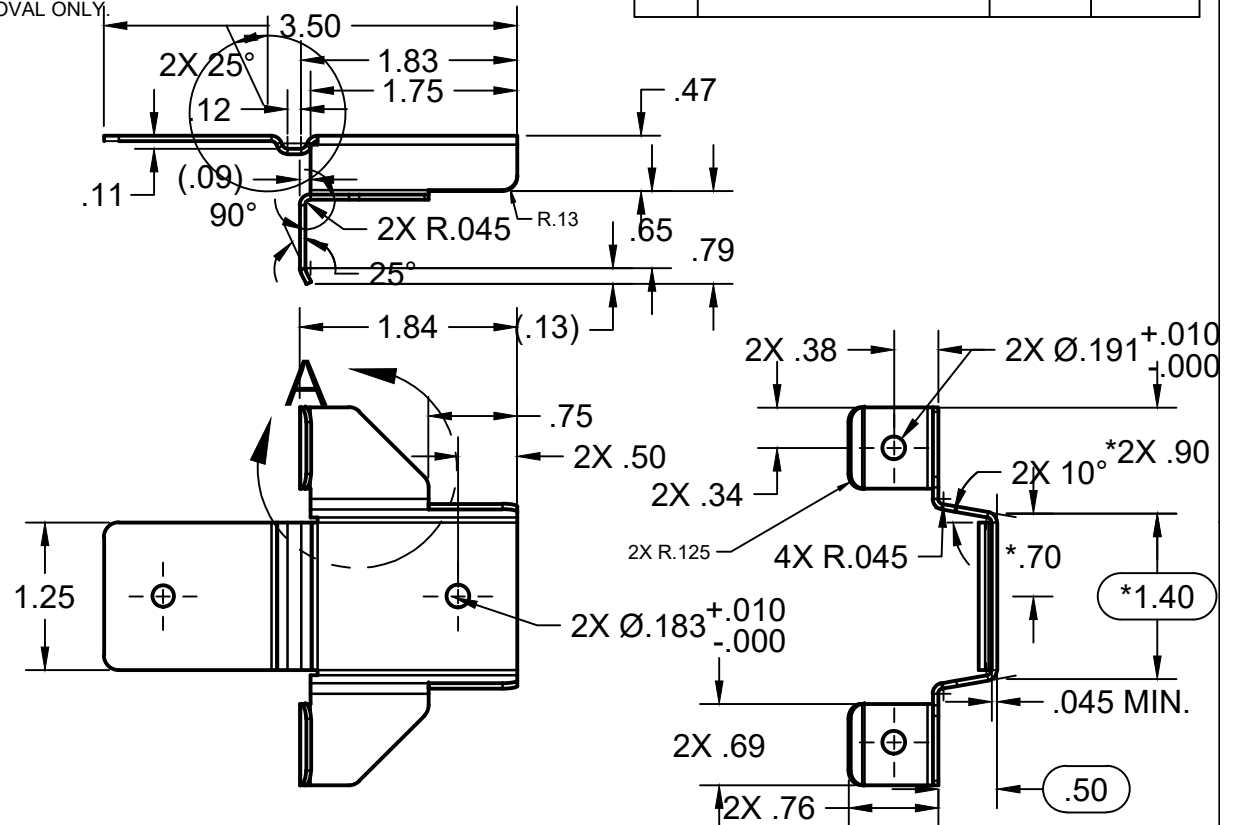
NOTES:

1. ALL DIMENSIONS ARE IN INCHES, UNLESS SPECIFIED OTHERWISE.
2. DIMENSIONS IN PARATHENSIS REPRESENT REFERENCE DIMENSIONS.
3. MATERIAL SUBSTITUTIONS ALLOWED WITH WRITTEN APPROVAL ONLY.
4. BREAK ALL SHARP CORNERS AND REMOVE ANY BURRS.
5. BRIDGING TO BE FREE OF ANY VISIBLE STRESS CRACKS.
6. BRIDGING DRAWN TO .0451" MIN. MATERIAL THICKNESS.
7. * DENOTES THEORETICAL SHARP.

REVISIONS			
REV	DESCRIPTION	DATE	APVL



DETAIL A
SCALE 1.0326



TOLERANCE:
.X = ±.060
.XX = ±.015
.XXX = ±.005
ANGLES = ±1°

MATERIAL: .0451" MIN. SS GRADE 50
FINISH: G90, PER ASTM A653

APPROVED C.HABA 2/18/2019

CHECKED C.HABA 2/18/2019

DRAWN S. LEECH 2/18/2019

PROJECT 0008			
TITLE BRIDGING, COLD ROLLED CHANNEL (CRC) NO. 2			
SIZE B	CODE	DWG NO B2_CRC_0008	REV NEW
SCALE 1:1	WEIGHT	SHEET 1/1	

THE DRAWING AND ALL OTHER INFORMATION CONTAINED HEREIN ARE THE CONFIDENTIAL PROPRIETARY PROPERTY OF TELLING INDUSTRIES. THIS DRAWING INFORMATION, IN WHOLE OR IN PART, MAY NOT BE COPIED IN ANY MANNER OR DISCLOSED TO ANYONE WITHOUT PRIOR WRITTEN CONSENT OF TELLING INDUSTRIES. DISCLOSURE OF ANY DRAWING OR INFORMATION IS INTENDED NOT TO AND SHALL NOT OPERATE AS A LICENSE OR AUTHORIZATION TO USE IT FOR ANY PURPOSE WITHOUT SPECIFIC WRITTEN CONSENT OF TELLING INDUSTRIES.