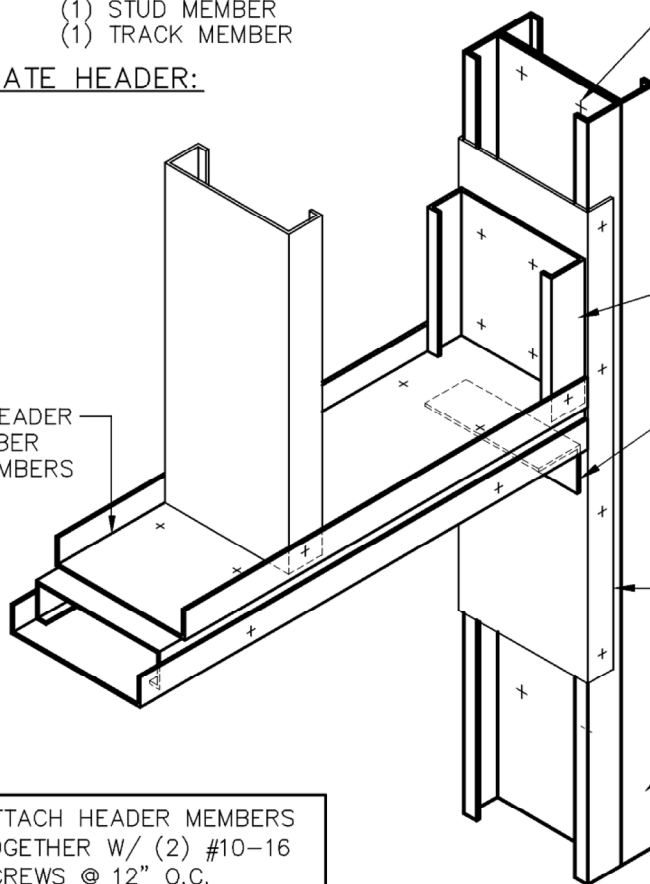


STEEL STUD HEADER  
(1) STUD MEMBER  
(1) TRACK MEMBER

ALTERNATE HEADER:

STEEL STUD HEADER  
(1) STUD MEMBER  
(2) TRACK MEMBERS



ATTACH JAMBS STUDS  
TOGETHER W/  
(2) #10-16 SCREWS  
@ 12" O.C.

SECTION OF STUD  
ATTACH W/  
(4) #10-16 SCREWS

L 2"x2"x14 GA (50 KSI)  
x 1/2" SHORTER THAN  
STUD DEPTH W/  
(4) #10-16 EA. LEG  
OR 1/8" x 4" LONG  
FILLET WELD EA. LEG

CLOSURE TRACK (54 MIL)  
AS REQUIRED FOR  
HEADER ATTACHMENT  
W/ (4) #10-16 SCREWS  
@ EACH LEG

FULL HEIGHT JAMB  
STUDS (TYP.)

ATTACH HEADER MEMBERS  
TOGETHER W/ (2) #10-16  
SCREWS @ 12" O.C.

ALL HEADER MEMBERS  
MUST SPAN ENTIRE LENGTH  
OF OPENING W/O SPLICES

TELLING™



BUILDSTRONG

6272 CENTER STREET  
MENTOR, OHIO 44060  
PHONE: 440-974-3370

DETAIL IS FOR  
REFERENCE ONLY.  
NOT FOR CONSTRUCTION.

DETAIL PROVIDED BY:



100 CAMELOT DRIVE  
FOND DU LAC, WI 54935  
PHONE: (920) 926-9800

## FLATWISE HEADER — JAMB DETAIL