

POLYGUARD 650 TRM MEMBRANE OR POLYGUARD TRM FLASH 36" APPLIED TO ICF SUBSTRATE PREPARED WITH 650 WB LIQUID ADHESIVE AT A RATE OF 350 - 400 SF/GAL

FEATHERED BEAD OF POLYGUARD TRM SEALANT

12" WIDE POLYGUARD TRM FLASH 36" OR POLYGUARD 650 TRM MEMBRANE 6" ON ICF AND 6" ONTO ICF PREPARED WITH POLYGUARD 650 WB LIQUID ADHESIVE AT A RATE OF 350 - 400 SF/GAL

FEATHERED BEAD OF POLYGUARD TRM SEALANT

CMU STEM WALL - BY OTHERS

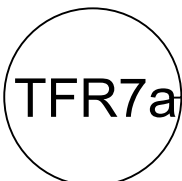
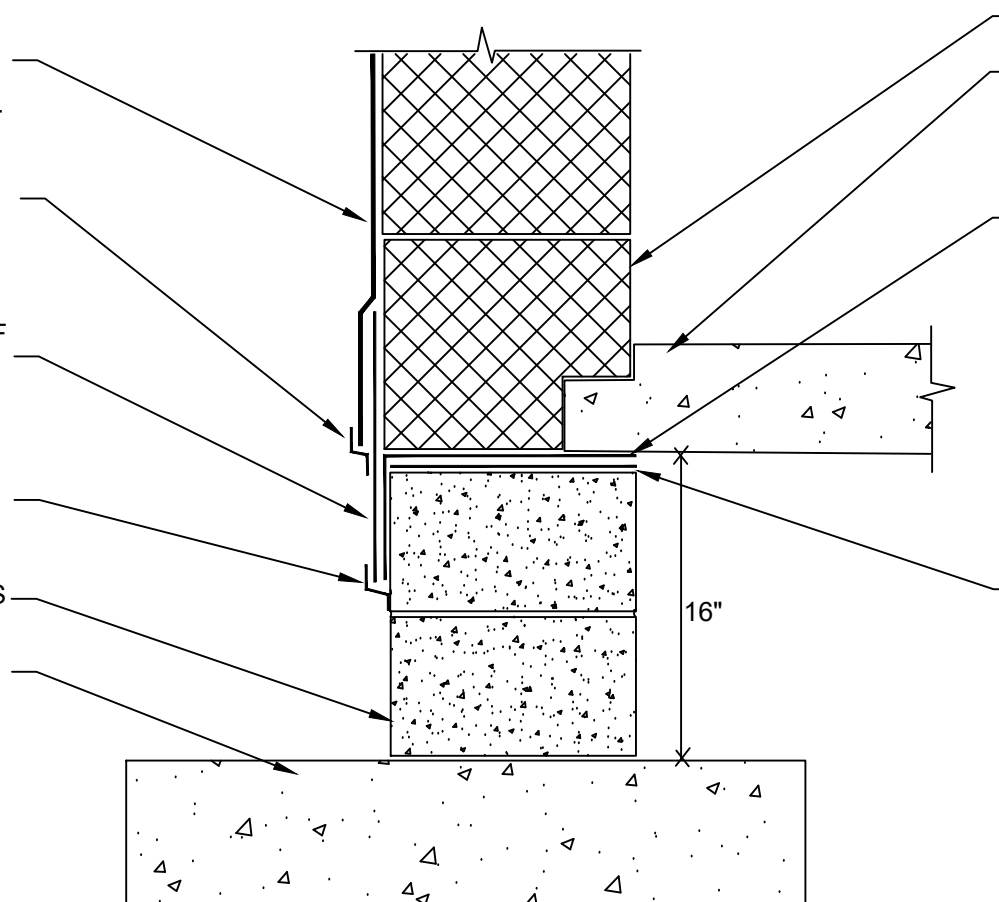
FOOTER - BY OTHERS

ICF - BY OTHERS

4" SLAB - BY OTHERS

12" WIDE POLYGUARD TRM SILL MEMBRANE APPLIED OVER GROUT TO ENTIRE TOP OF CMU AND DOWN FACE OF CMU PREPARED WITH POLYGUARD 650 WB LIQUID ADHESIVE APPLIED AT A RATE OF 350 - 400 SF/GAL

TOP OF CMU BLOCK TO BE SEALED WITH NON SHRINK GROUT APPLIED TO CSP3 OR BETTER FOR A SMOOTH SURFACE TO APPLY POLYGUARD TRM SILL MEMBRANE



SECTION @ ICF / STEM WALL TRANSITION

<p>The information provided is based on data and knowledge considered to be true and accurate and is offered for the users' consideration, investigation and verification, but we do not warrant the results to be obtained. Please read all data sheets, statements, recommendations or suggestions in conjunction with our conditions of sale, which apply to all goods supplied by us.</p>	NOT TO SCALE
	EFFECTIVE DATE: 10/24/2024
	SUPERCEDES: