

MINIMUM 90 MILS OF POLYGUARD DETAIL SEALANT PW OR LM-95 LIQUID MEMBRANE APPLIED AND TOOLED TO CLEAN, DRY, AND FROST-FREE CONCRETE, OVER THE TOP EDGE OF THE TERMINATION BAR, AND TO COVER A MINIMUM 1/8" BEYOND THE PERIMETER OF EACH FASTENER HEAD

1/8" X 1" METAL TERMINATION BAR (BY OTHERS) ALIGNED ALONG THE TOP EDGE OF THE POLYGUARD TERM FOUNDATION BARRIER MEMBRANE WITH FASTENERS (BY OTHERS) SPACED 2" INWARD FROM EACH END OF TERMINATION BAR AND NOT MORE THAN 8" SPACING BETWEEN FASTENERS.

POLYGUARD LOWFLOW OR POLYFLOW 15P PERIMETER DRAINAGE AND PROTECTION BOARD (POLYFLOW 15P SHOWN)

EXTERIOR RIGID INSULATION BOARD

POLYGUARD TERM FOUNDATION BARRIER MEMBRANE APPLIED TO SUBSTRATE PREPARED WITH POLYGUARD 650 LT LIQUID ADHESIVE, CALIFORNIA SEALANT, OR SHUR-TAC LIQUID ADHESIVE APPLIED AT A RATE OF 250 - 300 SF / GAL. OVERLAPS ARE A MINIMUM 2-1/2" ON SIDE LAPS AND A MINIMUM 6" ON END LAPS.

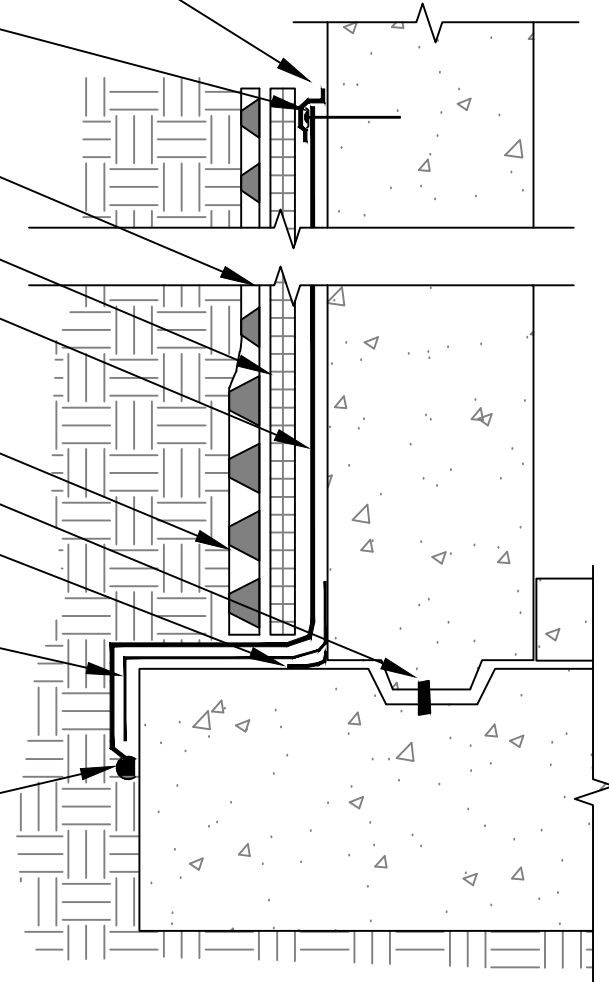
POLYGUARD TOTALFLOW PERIMETER DRAINAGE

WATERSTOP (BY OTHERS)

3/4" FACE FILLET / CANT BEAD OF POLYGUARD DETAIL SEALANT PW OR LM-95 LIQUID MEMBRANE APPLIED TO RAW CONCRETE ALONG INSIDE CORNERS

12" STRIP OF POLYGUARD TERM FOUNDATION BARRIER MEMBRANE APPLIED AND CENTERED (6" ON EACH CONCRETE FACE) ON ALL INSIDE AND OUTSIDE CORNERS PREPARED WITH POLYGUARD 650 LT LIQUID ADHESIVE, CALIFORNIA SEALANT, OR SHUR-TAC LIQUID ADHESIVE APPLIED AT A RATE OF 250 - 300 SF / GAL

90 MILS POLYGUARD DETAIL SEALANT PW OR LM-95 LIQUID MEMBRANE



TV1b

SECTION @ TERM[®] FOUNDATION BARRIER MEMBRANE WITH EXTERIOR INSULATION BOARD

©POLYGUARD PRODUCTS, INC.

Polyguard[®]
 Innovation based. Employee owned. Expect more.
 P.O. Box 755 - Ennis, TX 75120
 Phone: 214-515-5000 Fax: 972-875-9425
 Web Site - www.polyguardbarriers.com



The information provided is based on data and knowledge considered to be true and accurate and is offered for the users' consideration, investigation, and verification; but we do not warrant the results to be achieved. Please read all data sheets, statements, suggestions, or recommendations in conjunction with our conditions of sale, which apply to all goods supplied by us.	DRAWING SCALE:
	NOT TO SCALE
	EFFECTIVE DATE:
	12/06/2017
	SUPERCEDES:
	NONE