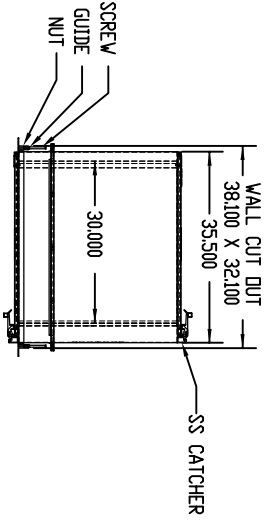
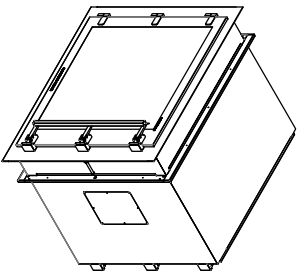
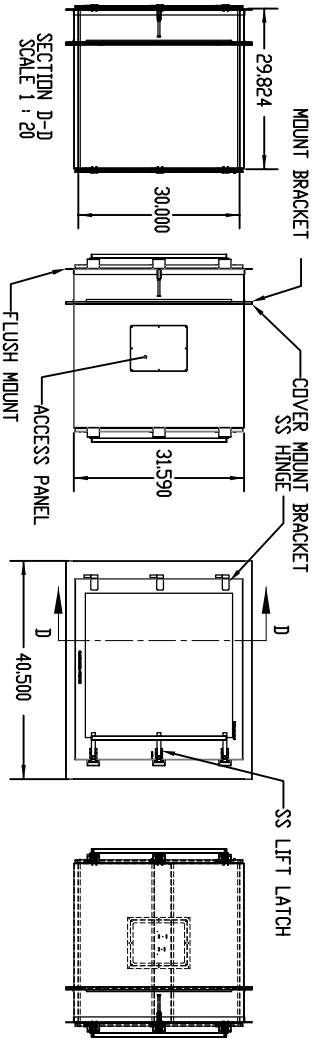
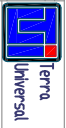


ALL SHIPS



REV	DESCRIPTION	DATE	BY	CHKD	INTERIOR SPEC.	FRAME SPEC.	ELECTRICAL	MECHANICAL SPECIFICATIONS	TITLE
0	INITIAL RELEASE	08/27/18	LT						PASS-THROUGH, EPDM/SS CLEAN/AM + 30V/300V/30H INSULATED INTERLOCK
					REVISIONS	NO. OF SHEETS	TOTAL SHEETS	DATE	PROJECT NO.
					01	01	01	08/27/18	2638-87B-2
					02	01	01	08/27/18	
					03	01	01	08/27/18	
					04	01	01	08/27/18	
					05	01	01	08/27/18	
					06	01	01	08/27/18	
					07	01	01	08/27/18	
					08	01	01	08/27/18	
					09	01	01	08/27/18	
					10	01	01	08/27/18	
					11	01	01	08/27/18	
					12	01	01	08/27/18	
					13	01	01	08/27/18	
					14	01	01	08/27/18	
					15	01	01	08/27/18	
					16	01	01	08/27/18	
					17	01	01	08/27/18	
					18	01	01	08/27/18	
					19	01	01	08/27/18	
					20	01	01	08/27/18	
					21	01	01	08/27/18	
					22	01	01	08/27/18	
					23	01	01	08/27/18	
					24	01	01	08/27/18	
					25	01	01	08/27/18	
					26	01	01	08/27/18	
					27	01	01	08/27/18	
					28	01	01	08/27/18	
					29	01	01	08/27/18	
					30	01	01	08/27/18	
					31	01	01	08/27/18	
					32	01	01	08/27/18	
					33	01	01	08/27/18	
					34	01	01	08/27/18	
					35	01	01	08/27/18	
					36	01	01	08/27/18	
					37	01	01	08/27/18	
					38	01	01	08/27/18	
					39	01	01	08/27/18	
					40	01	01	08/27/18	
					41	01	01	08/27/18	
					42	01	01	08/27/18	
					43	01	01	08/27/18	
					44	01	01	08/27/18	
					45	01	01	08/27/18	
					46	01	01	08/27/18	
					47	01	01	08/27/18	
					48	01	01	08/27/18	
					49	01	01	08/27/18	
					50	01	01	08/27/18	
					51	01	01	08/27/18	
					52	01	01	08/27/18	
					53	01	01	08/27/18	
					54	01	01	08/27/18	
					55	01	01	08/27/18	
					56	01	01	08/27/18	
					57	01	01	08/27/18	
					58	01	01	08/27/18	
					59	01	01	08/27/18	
					60	01	01	08/27/18	
					61	01	01	08/27/18	
					62	01	01	08/27/18	
					63	01	01	08/27/18	
					64	01	01	08/27/18	
					65	01	01	08/27/18	
					66	01	01	08/27/18	
					67	01	01	08/27/18	
					68	01	01	08/27/18	
					69	01	01	08/27/18	
					70	01	01	08/27/18	
					71	01	01	08/27/18	
					72	01	01	08/27/18	
					73	01	01	08/27/18	
					74	01	01	08/27/18	
					75	01	01	08/27/18	
					76	01	01	08/27/18	
					77	01	01	08/27/18	
					78	01	01	08/27/18	
					79	01	01	08/27/18	
					80	01	01	08/27/18	
					81	01	01	08/27/18	
					82	01	01	08/27/18	
					83	01	01	08/27/18	
					84	01	01	08/27/18	
					85	01	01	08/27/18	
					86	01	01	08/27/18	
					87	01	01	08/27/18	
					88	01	01	08/27/18	
					89	01	01	08/27/18	
					90	01	01	08/27/18	
					91	01	01	08/27/18	
					92	01	01	08/27/18	
					93	01	01	08/27/18	
					94	01	01	08/27/18	
					95	01	01	08/27/18	
					96	01	01	08/27/18	
					97	01	01	08/27/18	
					98	01	01	08/27/18	
					99	01	01	08/27/18	
					100	01	01	08/27/18	



Terra
UNIVERSAL
PASS-THROUGH, EPDM/SS
CLEAN/AM + 30V/300V/30H
INSULATED INTERLOCK

PROJECT NO. 2638-87B-2
SHEET 1 OF 38