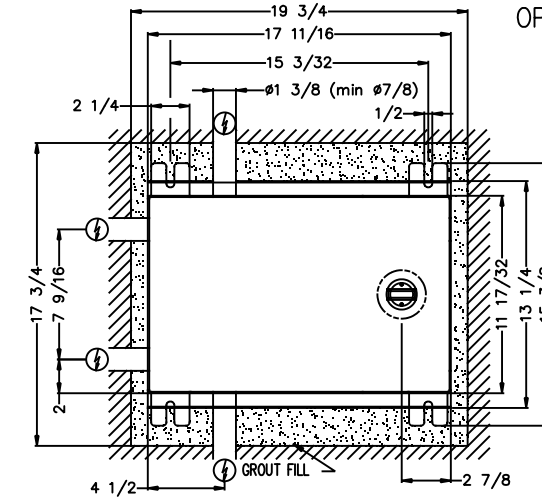
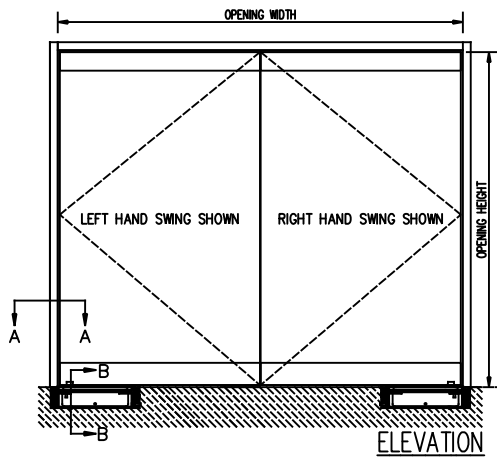




**TORMAX® TN 110 IN-FLOOR SWING DOOR OPERATOR
FLUSH MOUNT BOX
PAIR CENTER PIVOT APPLICATION**

JOB NAME: _____ DATE: _____
DOOR LOCATION: _____ DOOR NO: _____ SHEET _____ OF _____



OPERATOR AND FLOOR BOX
TOP VIEW

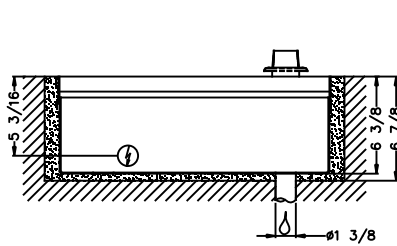
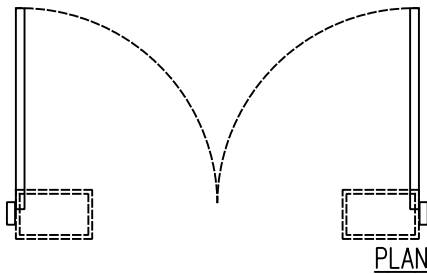
OPTION B

- EXTENDED SHAFT
- SPECIAL REMOVABLE COVER BOX FOR FLOOR COVERING INSTALLATION
- MAX. FLOOR COVERING = 1/2"

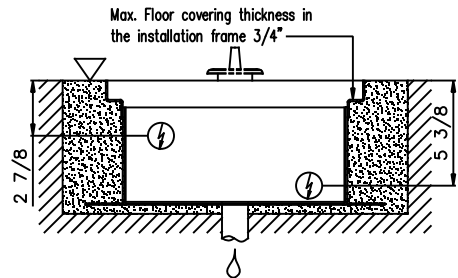
PIT DIMENSION

19 3/4" L x 17 3/4" W x 6 7/8" D

FLOOR BOX - OPTION B

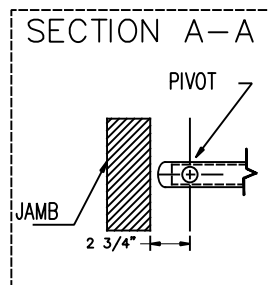


FRONT SECTION

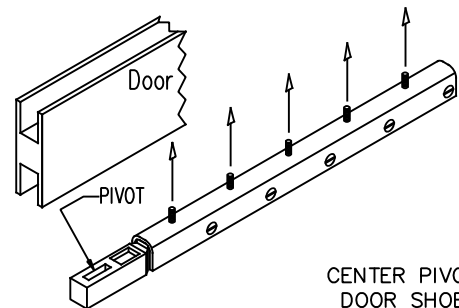


END SECTION B-B

- ▽ Concrete or Finished Floor
- ⏸ Weep Drain Required
- ⚡ Possible Electrical Feed



CENTER PIVOT



CENTER PIVOT
DOOR SHOE

REFER TO THRESHOLD DETAIL
DRAWING FOR DISTANCE FROM
BOTTOM OF DOOR SHOE TO
FINISHED FLOOR

NOTES:

1. DETAILS NOT TO SCALE.
2. ELECTRICAL REQUIREMENTS:
120VAC, 15AMP MIN. TO EACH CONTROLLER LOCATED REMOTE FROM OPERATOR. LOW VOLTAGE CONDUIT RUN FROM EACH CONTROLLER TO OPERATOR BY ELECTRICAL CONTRACTOR.
3. DOORS, FRAMES AND HARDWARE BY OTHERS.
4. 32" CLEAR DOOR OPENING REQUIRED TO MEET A.D.A. REQUIREMENTS.
5. DOORS MUST BE NON-LATCHED FOR PROPER OPERATION.
6. OPERATOR CAN BE CONFIGURED TO MEET ANSI STANDARDS A156.10 & ANSI A156.19