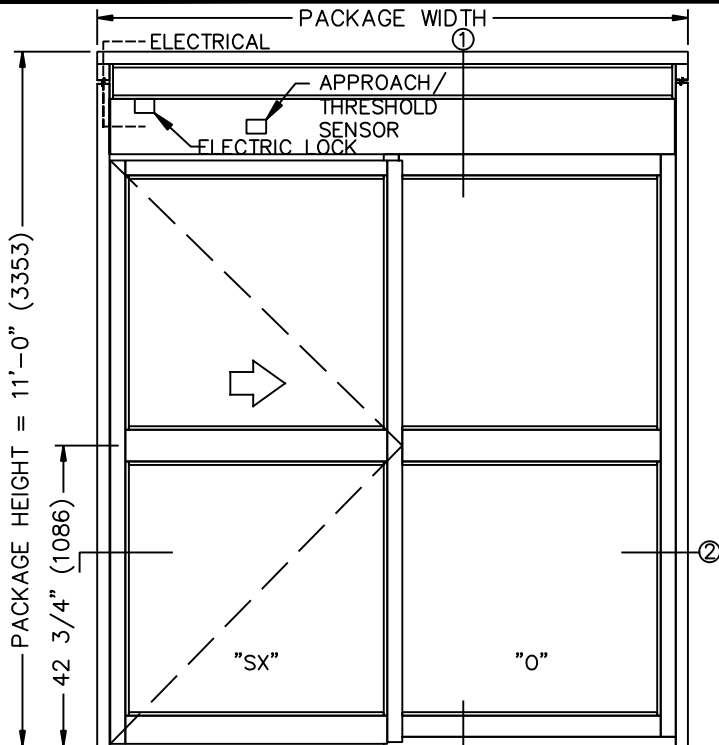


TX9200AC AUTOMATIC SLIDING DOOR SYSTEM

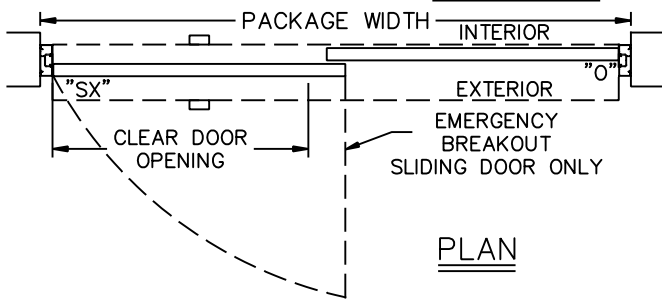
SINGLE, R.H. OUTSIDE SLIDE W/TRANSOM ELECTRIC LOCK AND FLUSH MOUNT EXIT PANIC HARDWARE

JOB NAME: _____ DATE: _____

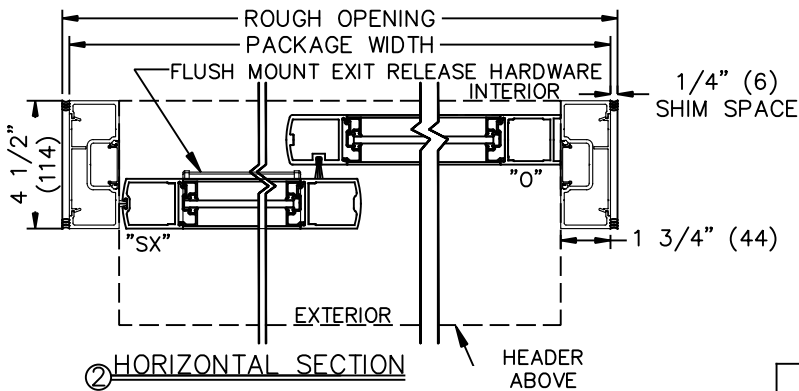
DOOR LOCATION: _____ DOOR NO: _____ SHEET _____ OF _____



ELEVATION



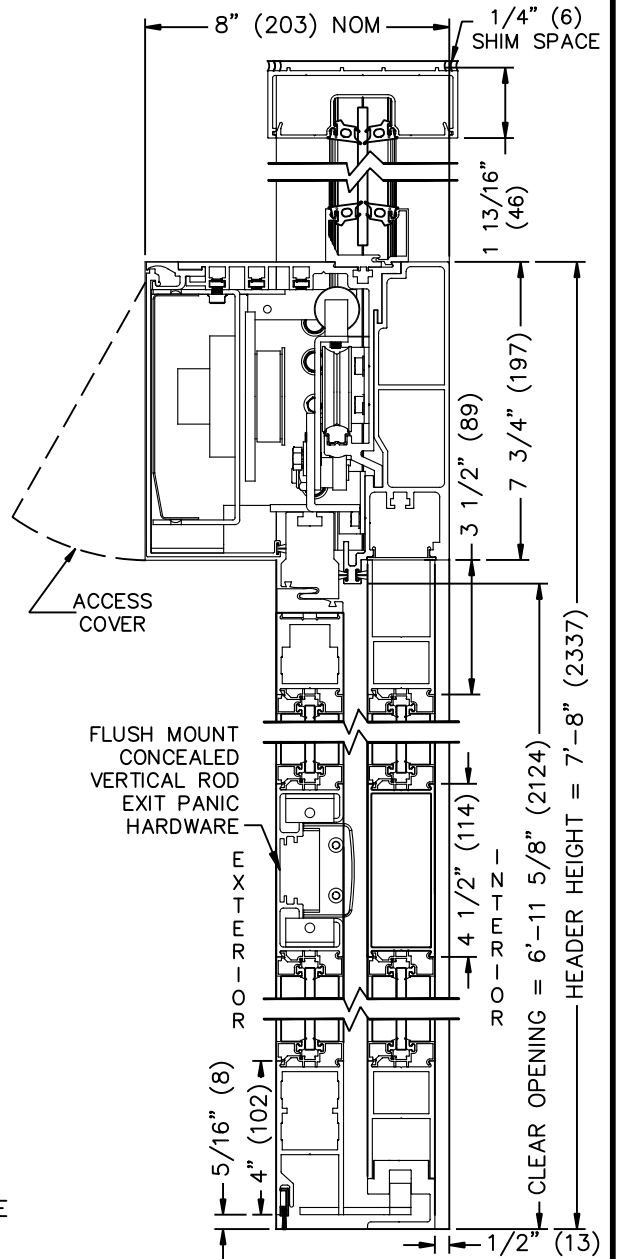
PLAN



HORIZONTAL SECTION

NOTES:

- ELEVATION & PLAN DETAILS TO SCALE.
- ELECTRICAL REQUIREMENTS:
120VAC, 5AMPS MIN. TO OPERATOR BY ELECTRICAL CONTRACTOR.
- DOOR PACKAGES ARE INDIVIDUALLY ENGINEERED TO FIT YOUR JOB REQUIREMENTS.



1 VERTICAL SECTION
(NOT TO SCALE)

SEE APPENDIX FOR DETAILS OF TX9200 HEAVY DUTY DRIVE SYSTEM AND THRESHOLD OPTIONS.
SEE APPENDIX 2.1.H FOR SURFACE MOUNT CONCEALED VERTICAL ROD EXIT PANIC HARDWARE OPTION

SAMPLE PACKAGE WIDTH INFORMATION

| PKG. WIDTH | NOMINAL CLEAR DOOR OPENING | SLIDING DOOR / PANEL NOM. WIDTH | EMERGENCY BREAKOUT NOM. WIDTH |
|--------------|----------------------------|---------------------------------|-------------------------------|
| 7'-0" (2134) | 36" (914) | 41 1/2" (1054) | 39" (991) |
| 8'-0" (2438) | 42" (1067) | 47 1/2" (1207) | 45" (1143) |
| 9'-0" (2743) | 48" (1219) | 53 1/2" (1358) | 51" (1295) |