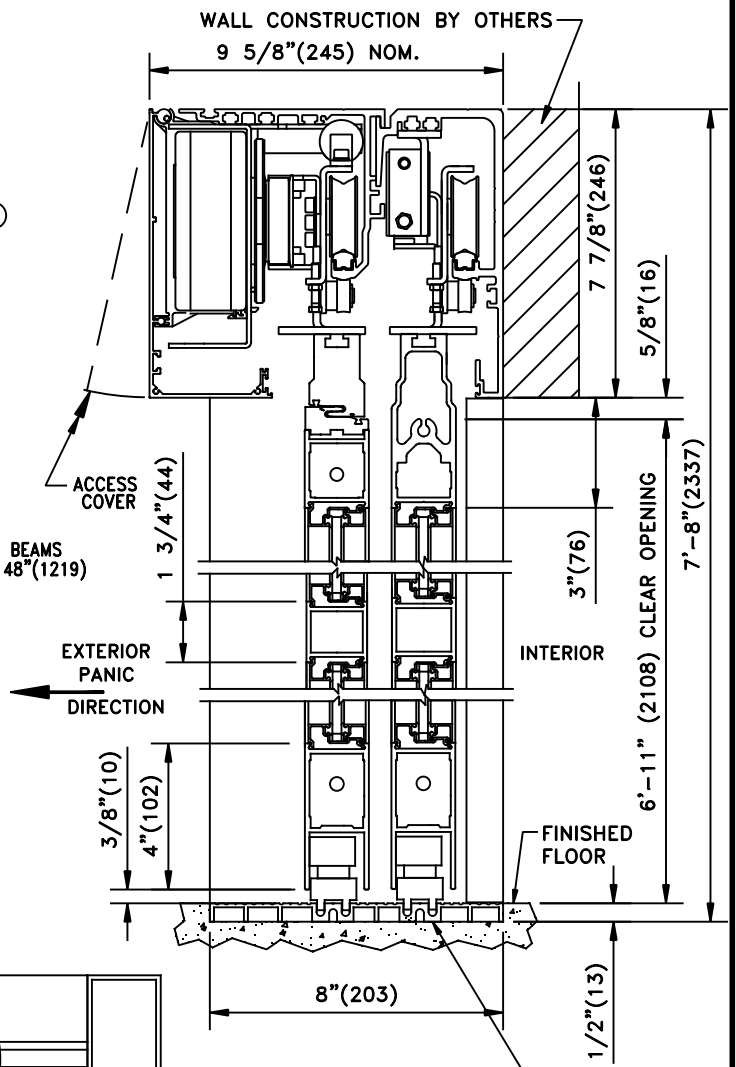
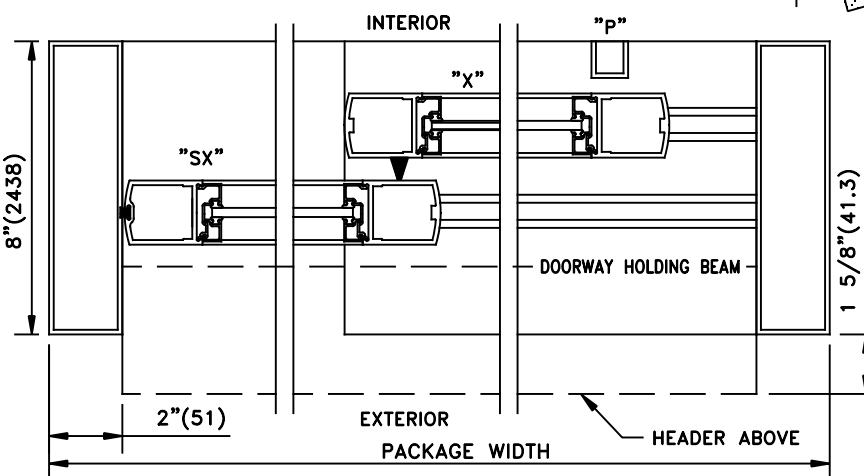
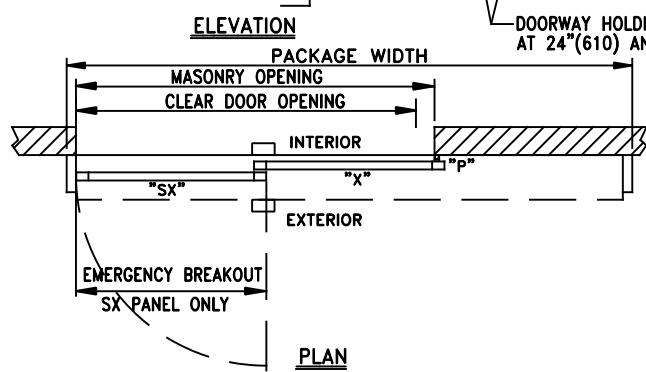
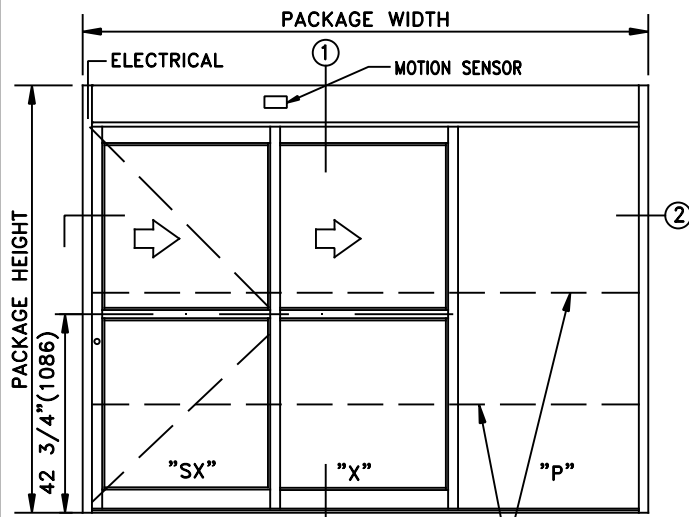


JOB NAME: _____ DATE: _____
 DOOR LOCATION: _____ DOOR NO: _____ SHEET _____ OF _____



① **VERTICAL SECTION**
 See Appendix For Threshold Options

See Appendix For Details of TX9400 With Heavy Duty Drive System

THREE PANEL FORMULAS (PANEL OVERLAP 2 5/8")
 PANEL WIDTH=[(FRAME-4.125)+(5.25)]/3
 DOW=FRAME WIDTH-(4.125)-(PANEL WIDTH)-(7.25)
 M.O.=DOW + 7.25
 FRAME WIDTH=(M.O.+4.125)+[(M.O.)+(5.25)]/2
 EMERGENCY BREAKOUT=PANEL WIDTH-2.5

SAMPLE PACKAGE WIDTH INFORMATION

PKG. WIDTH	NOMINAL CLEAR DOOR OPENING	SLIDING DOOR / PANEL NOM. WIDTH	EMERGENCY BREAKOUT NOM. WIDTH
7'-0"(2134)	44 1/4"(1124)	28 3/8"(721)	25 7/8"(657)
8'-0"(2438)	52 1/4"(1327)	32 3/8"(822)	29 7/8"(759)
9'-0"(2743)	60 1/4"(1530)	36 3/8"(924)	33 7/8"(860)

- NOTES:
1. DETAILS NOT TO SCALE.
 2. ELECTRICAL REQUIREMENTS: 120VAC, 5AMPS MIN. TO OPERATOR BY ELECTRICAL CONTRACTOR.
 3. DOOR PACKAGES ARE INDIVIDUALLY ENGINEERED TO FIT YOUR JOB REQUIREMENTS.