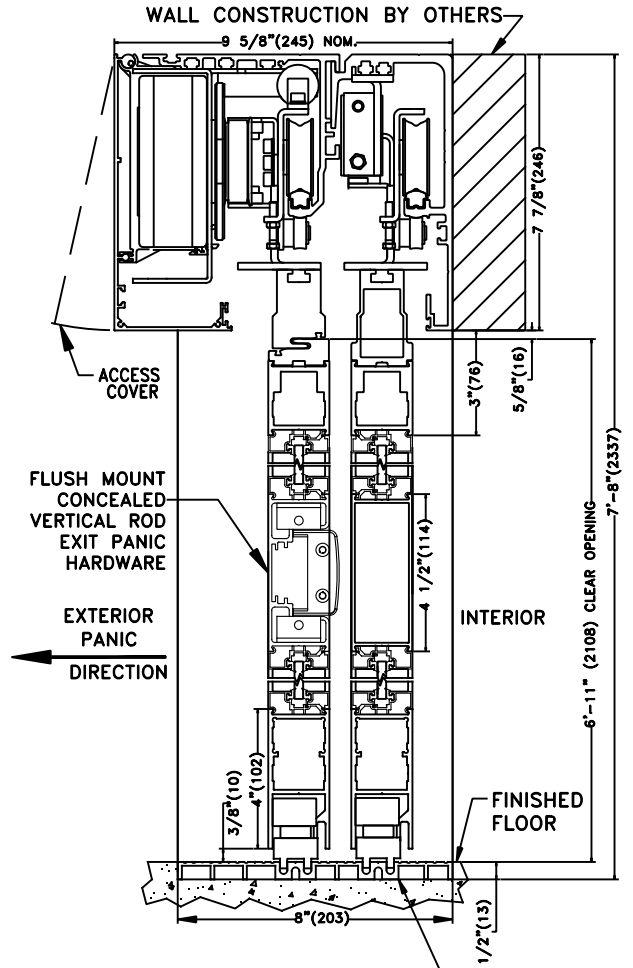
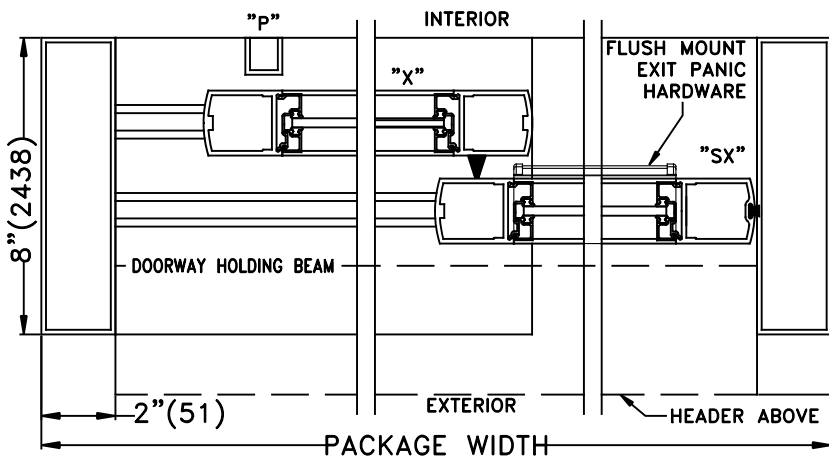
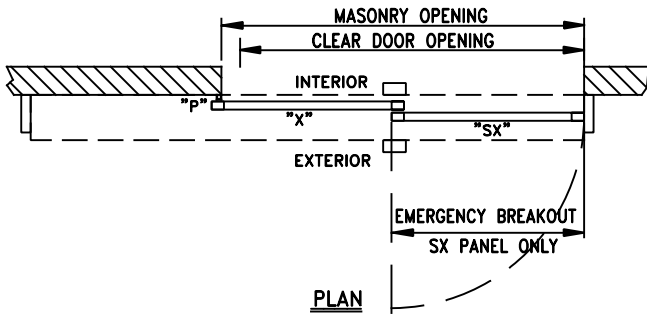
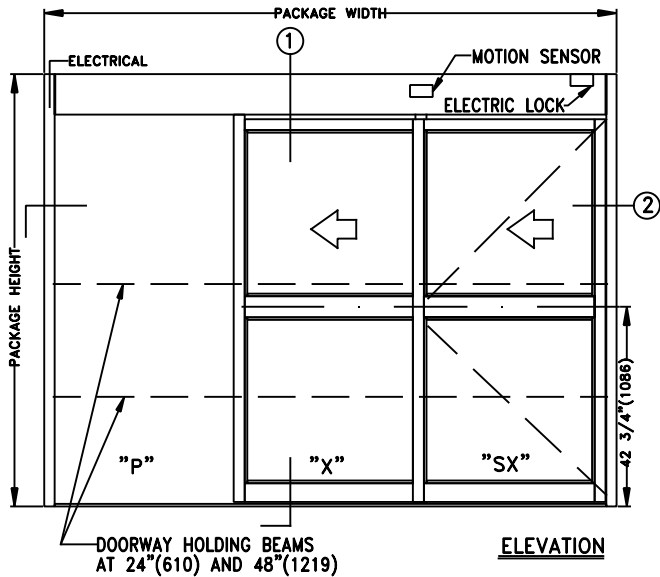


TX9420FMAC TELESCOPING AUTOMATIC SLIDING DOOR
LEFT HAND FLUSH WALL MOUNT W/FLOOR TRACK (P-X-SX)
W/ ELECTRIC LOCK & FLUSH MOUNT EXIT PANIC HARDWARE

JOB NAME: _____ DATE: _____

DOOR LOCATION: _____ DOOR NO: _____ SHEET _____ OF _____



① **VERTICAL SECTION** See Appendix For Threshold Options

See Appendix For Details of TX9400 With Heavy Duty Drive System

SEE APPENDIX 2.1.H FOR SURFACE MOUNT CONCEALED VERTICAL ROD EXIT PANIC HARDWARE OPTION

THREE PANEL FORMULAS (PANEL OVERLAP 2 5/8")
 PANEL WIDTH=[(FRAME-4.125)+(5.25)]/3
 DOW=FRAME WIDTH-(4.125)-(PANEL WIDTH)-(7.25)
 M.O.=DOW + 7.25
 FRAME WIDTH=(M.O.+4.125)+[(M.O.)+(5.25)]/2
 EMERGENCY BREAKOUT=PANEL WIDTH-2.5

SAMPLE PACKAGE WIDTH INFORMATION

PKG. WIDTH	NOMINAL CLEAR DOOR OPENING	SLIDING DOOR / PANEL NOM. WIDTH	EMERGENCY BREAKOUT NOM. WIDTH
7'-0"(2134)	44 1/4"(1124)	28 3/8"(721)	25 7/8"(657)
8'-0"(2438)	52 1/4"(1327)	32 3/8"(822)	29 7/8"(759)
9'-0"(2743)	60 1/4"(1530)	36 3/8"(924)	33 7/8"(860)

- NOTES:**
1. DETAILS NOT TO SCALE.
 2. ELECTRICAL REQUIREMENTS: 120VAC, 5AMPS MIN. TO OPERATOR BY ELECTRICAL CONTRACTOR.
 3. DOOR PACKAGES ARE INDIVIDUALLY ENGINEERED TO FIT YOUR JOB REQUIREMENTS.