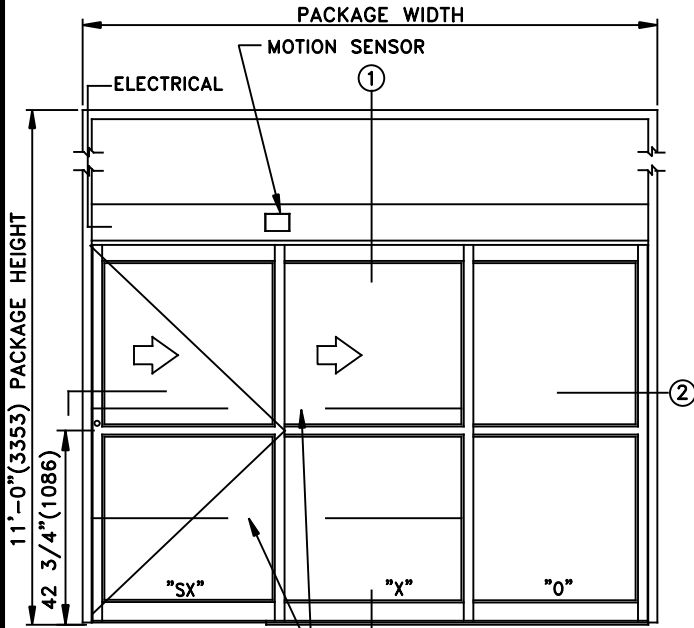
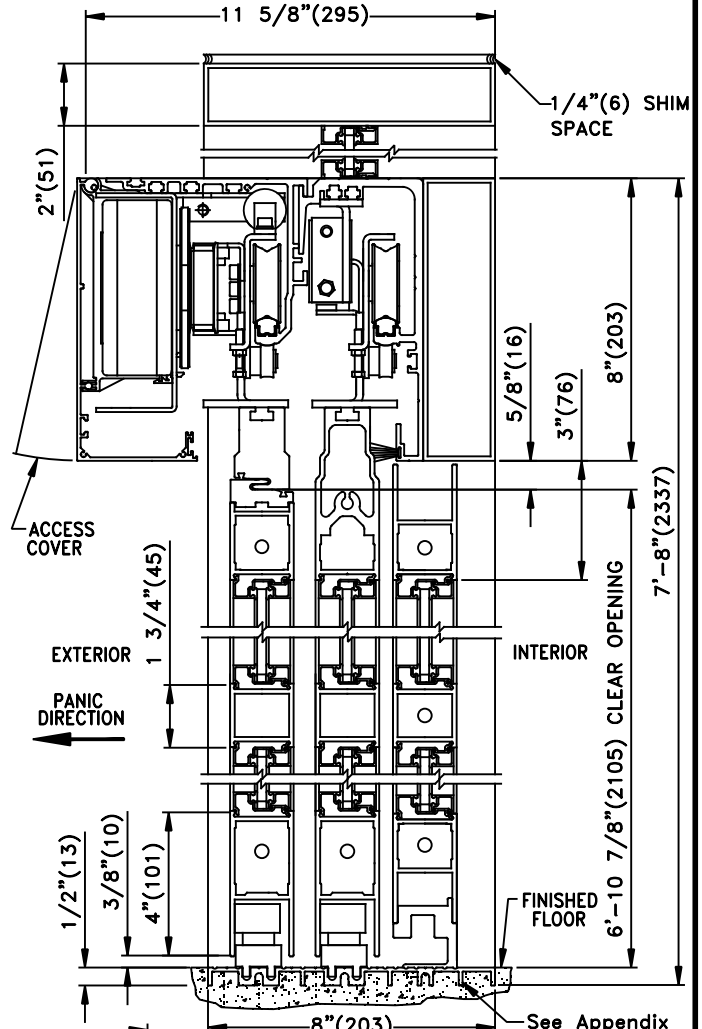
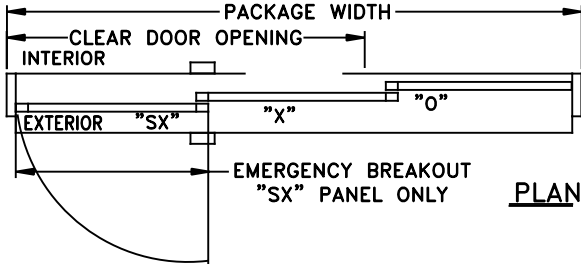


JOB NAME: _____ DATE: _____

DOOR LOCATION: _____ DOOR NO: _____ SHEET OF _____



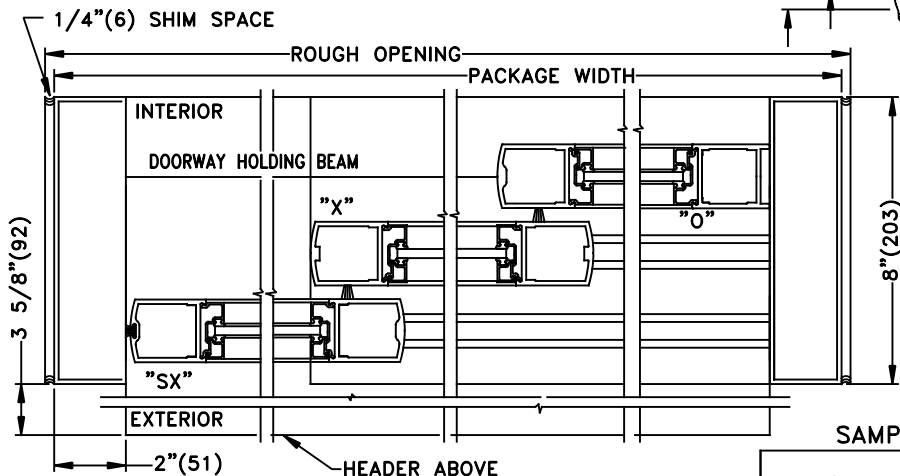
DOORWAY HOLDING BEAMS AT 24"(610) AND 48"(1219)
ELEVATION



① **VERTICAL SECTION**
 See Appendix For Threshold Options

See Appendix For Details of TX9400 With Heavy Duty Drive System

THREE PANEL FORMULAS (PANEL OVERLAP 2 5/8")
 PANEL WIDTH=[(FRAME-4.125)+(5.25)]/3
 DOW=FRAME WIDTH-(4.125)-(PANEL WIDTH)-(7.25)
 FRAME WIDTH=(DOWx1.5)+17 5/8"
 EMERGENCY BREAKOUT=PANEL WIDTH-2.5



② **HORIZONTAL SECTION**

- NOTES:
 1. DETAILS NOT TO SCALE.
 2. ELECTRICAL REQUIREMENTS: 120VAC, 5AMPS MIN. TO OPERATOR BY ELECTRICAL CONTRACTOR.
 3. DOOR PACKAGES ARE INDIVIDUALLY ENGINEERED TO FIT YOUR JOB REQUIREMENTS.

SAMPLE PACKAGE WIDTH INFORMATION

PKG. WIDTH	NOMINAL CLEAR DOOR OPENING	SLIDING DOOR / PANEL NOM. WIDTH	EMERGENCY BREAKOUT NOM. WIDTH
7'-0" (2134)	44 1/4" (1124)	28 3/8" (721)	25 7/8" (657)
8'-0" (2438)	52 1/4" (1327)	32 3/8" (822)	29 7/8" (759)
9'-0" (2743)	60 1/4" (1530)	36 3/8" (924)	33 7/8" (860)