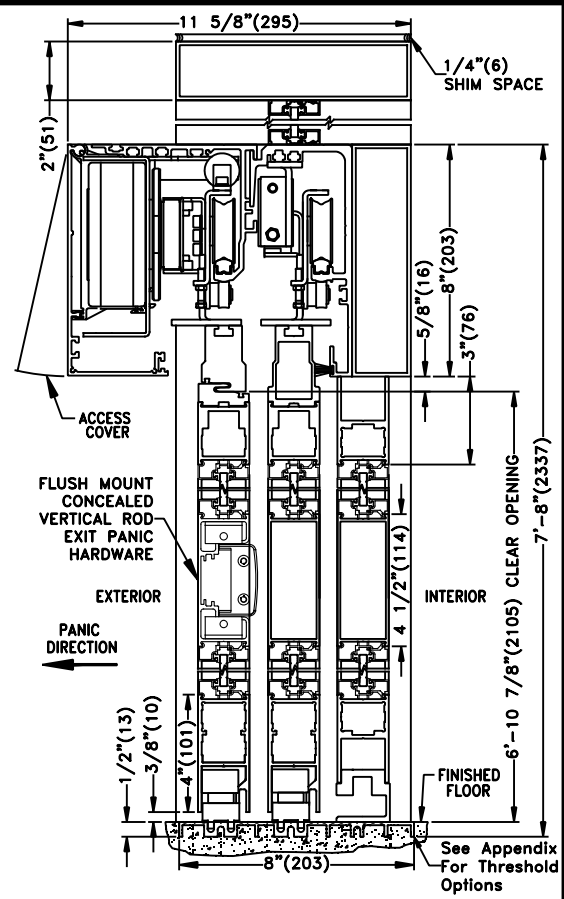
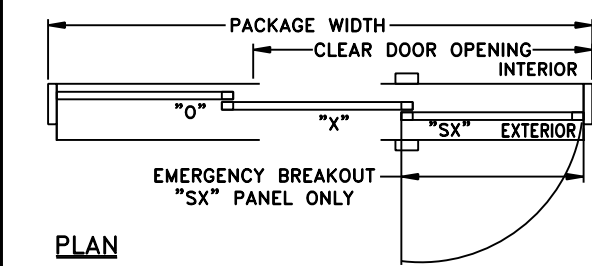
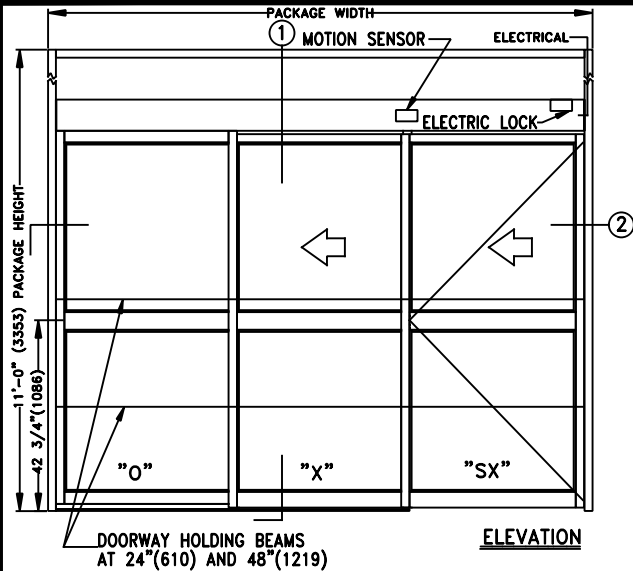




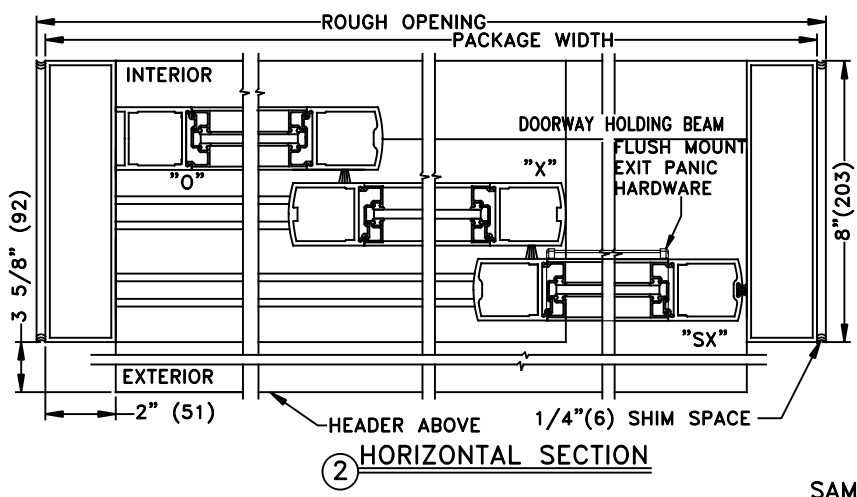
TX9420AC TELESCOPING AUTOMATIC SLIDING DOOR

SINGLE L.H. OUTSIDE SLIDE APPLICATION W/TRANSOM (O-X-SX) W/ ELECTRIC LOCK & FLUSH MOUNT EXIT PANIC HARDWARE

JOB NAME: _____ DATE: _____
 DOOR LOCATION: _____ DOOR NO: _____ SHEET _____ OF _____



① **VERTICAL SECTION**
 See Appendix For Details of TX9400 With Heavy Duty Drive System
 SEE APPENDIX 2.1.H FOR SURFACE MOUNT CONCEALED VERTICAL ROD EXIT PANIC HARDWARE OPTION



THREE PANEL FORMULAS (PANEL OVERLAP 2 5/8")
 $PANEL\ WIDTH = [(FRAME - 4.125) + (5.25)] / 3$
 $DOW = FRAME\ WIDTH - (4.125) - (PANEL\ WIDTH) - (7.25)$
 $FRAME\ WIDTH = (DOW \times 1.5) + 17\ 5/8"$
 EMERGENCY BREAKOUT = PANEL WIDTH - 2.5

- NOTES:**
1. DETAILS NOT TO SCALE.
 2. ELECTRICAL REQUIREMENTS: 120VAC, 5AMPS MIN. TO OPERATOR BY ELECTRICAL CONTRACTOR.
 3. DOOR PACKAGES ARE INDIVIDUALLY ENGINEERED TO FIT YOUR JOB REQUIREMENTS.

SAMPLE PACKAGE WIDTH INFORMATION

PKG. WIDTH	NOMINAL CLEAR DOOR OPENING	SLIDING DOOR / PANEL NOM. WIDTH	EMERGENCY BREAKOUT NOM. WIDTH
7'-0" (2134)	44 1/4" (1124)	28 3/8" (721)	25 7/8" (657)
8'-0" (2438)	52 1/4" (1327)	32 3/8" (822)	29 7/8" (759)
9'-0" (2743)	60 1/4" (1530)	36 3/8" (924)	33 7/8" (860)