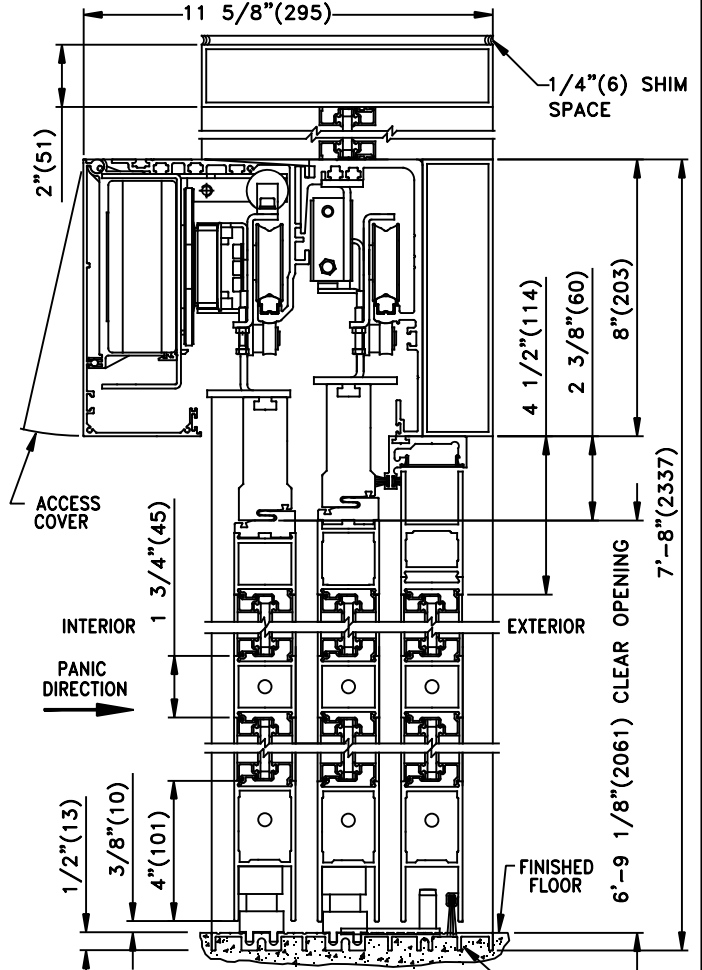
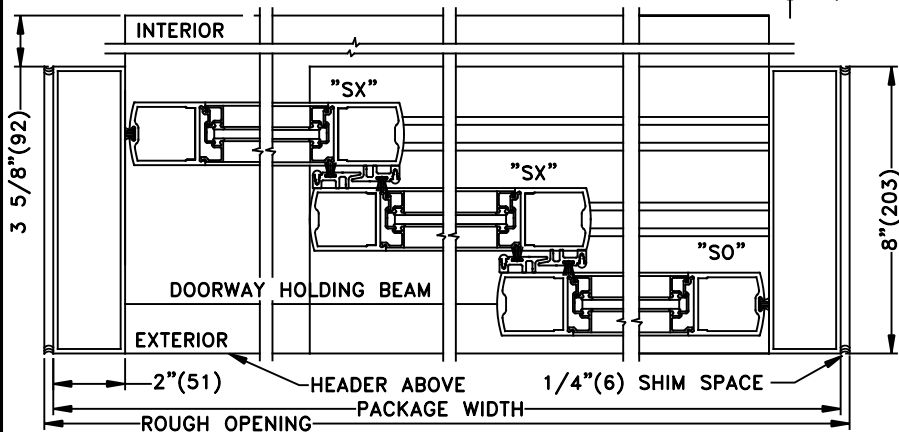
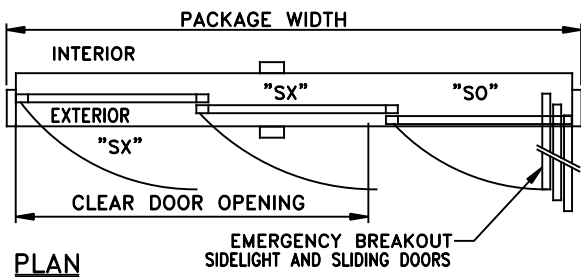
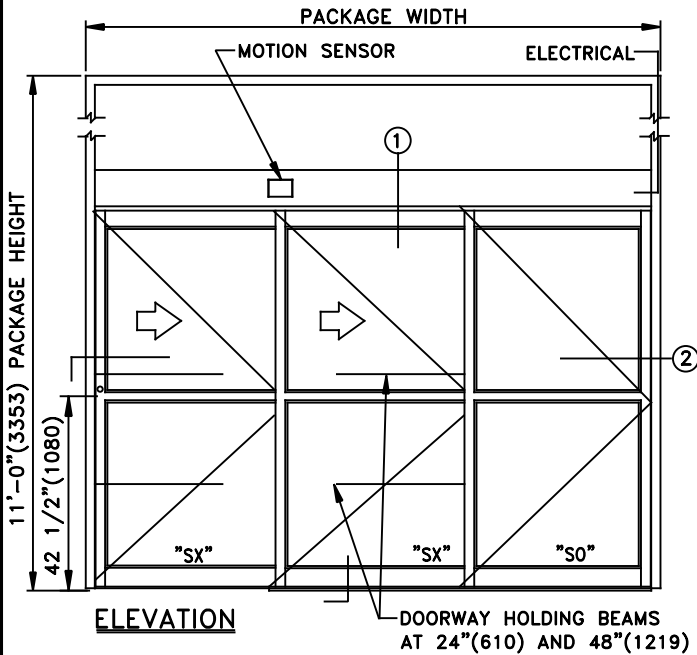




TX9430 TELESCOPING AUTOMATIC SLIDING DOOR

SINGLE R.H. INSIDE SLIDE APPLICATION W/TRANSOM (SX-SX-SO)

JOB NAME: _____ DATE: _____
 DOOR LOCATION: _____ DOOR NO: _____ SHEET OF _____



See Appendix For Details of TX9400 With Heavy Duty Drive System

THREE PANEL FORMULAS (PANEL OVERLAP 2 5/8")
 PANEL WIDTH=[(FRAME-4.250)+(5.25)]/3
 DOW=FRAME WIDTH-(4.250)-(PANEL WIDTH)-(7.25)
 FRAME WIDTH=(DOWx1.5)+17 23/32"
 EMERGENCY BREAKOUT=UNIT WIDTH-10 5/8"

SAMPLE PACKAGE WIDTH INFORMATION

PKG. WIDTH	NOMINAL CLEAR DOOR OPENING	SLIDING DOOR / PANEL NOM. WIDTH	EMERGENCY BREAKOUT NOM. WIDTH
7'-0" (2134)	44 3/16" (1122)	28 5/16" (719)	75 3/8" (1915)
8'-0" (2438)	52 3/16" (1326)	32 5/16" (821)	87 3/8" (2219)
9'-0" (2743)	60 3/16" (1529)	36 5/16" (922)	99 3/8" (2524)

- NOTES:
 1. DETAILS NOT TO SCALE.
 2. ELECTRICAL REQUIREMENTS:
 120VAC, 5AMPS MIN. TO OPERATOR BY ELECTRICAL CONTRACTOR.
 3. DOOR PACKAGES ARE INDIVIDUALLY ENGINEERED TO FIT YOUR JOB REQUIREMENTS.