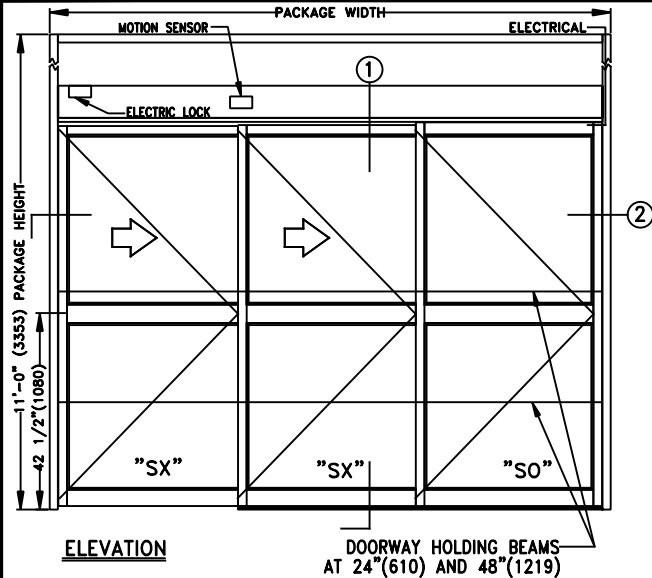




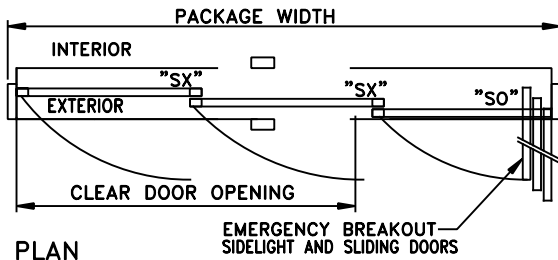
TX9430AC TELESCOPING AUTOMATIC SLIDING DOOR
SINGLE R.H. INSIDE SLIDE APPLICATION W/TRANSOM (SX-SX-SO)
W/ELECTRIC LOCK & FLUSH MOUNT EXIT PANIC HARDWARE

JOB NAME: _____ DATE: _____
 DOOR LOCATION: _____ DOOR NO: _____ SHEET _____ OF _____

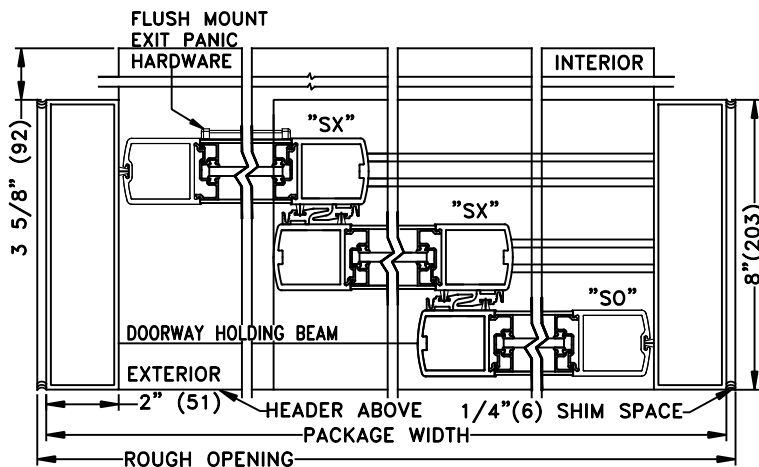


ELEVATION

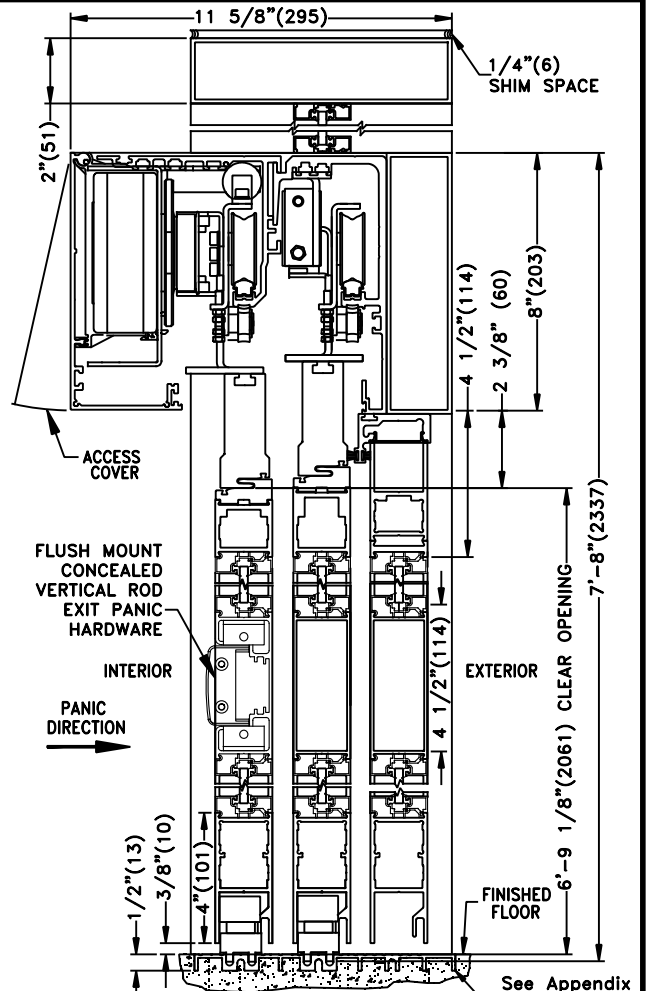
DOORWAY HOLDING BEAMS AT 24" (610) AND 48" (1219)



PLAN



HORIZONTAL SECTION



VERTICAL SECTION

See Appendix For Details of TX9400 With Heavy Duty Drive System

SEE APPENDIX 2.1.F FOR SURFACE MOUNT CONCEALED VERTICAL ROD EXIT PANIC HARDWARE OPTION

THREE PANEL FORMULAS (PANEL OVERLAP 2 5/8")
 PANEL WIDTH = [(FRAME - 4.125) + (5.25)] / 3
 DOW = FRAME WIDTH - (4.125) - (PANEL WIDTH) - (7.25)
 FRAME WIDTH = (DOW x 1.5) + 17 23/32"
 EMERGENCY BREAKOUT = UNIT WIDTH - 10 5/8"

- NOTES:**
1. DETAILS NOT TO SCALE.
 2. ELECTRICAL REQUIREMENTS: 120VAC, 5AMPS MIN. TO OPERATOR BY ELECTRICAL CONTRACTOR.
 3. DOOR PACKAGES ARE INDIVIDUALLY ENGINEERED TO FIT YOUR JOB REQUIREMENTS.

SAMPLE PACKAGE WIDTH INFORMATION

PKG. WIDTH	NOMINAL CLEAR DOOR OPENING	SLIDING DOOR / PANEL NOM. WIDTH	EMERGENCY BREAKOUT NOM. WIDTH
7'-0" (2134)	44 3/16" (1122)	28 5/16" (719)	75 3/8" (1915)
8'-0" (2438)	52 3/16" (1326)	32 5/16" (821)	87 3/8" (2219)
9'-0" (2743)	60 3/16" (1529)	36 5/16" (922)	99 3/8" (2524)