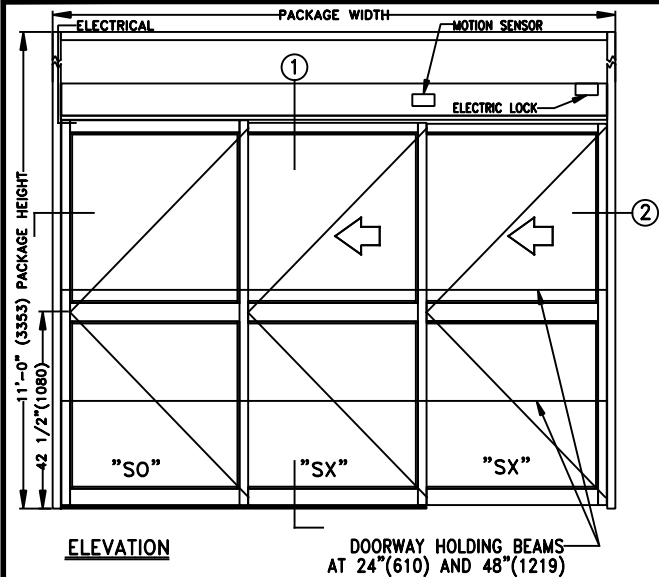
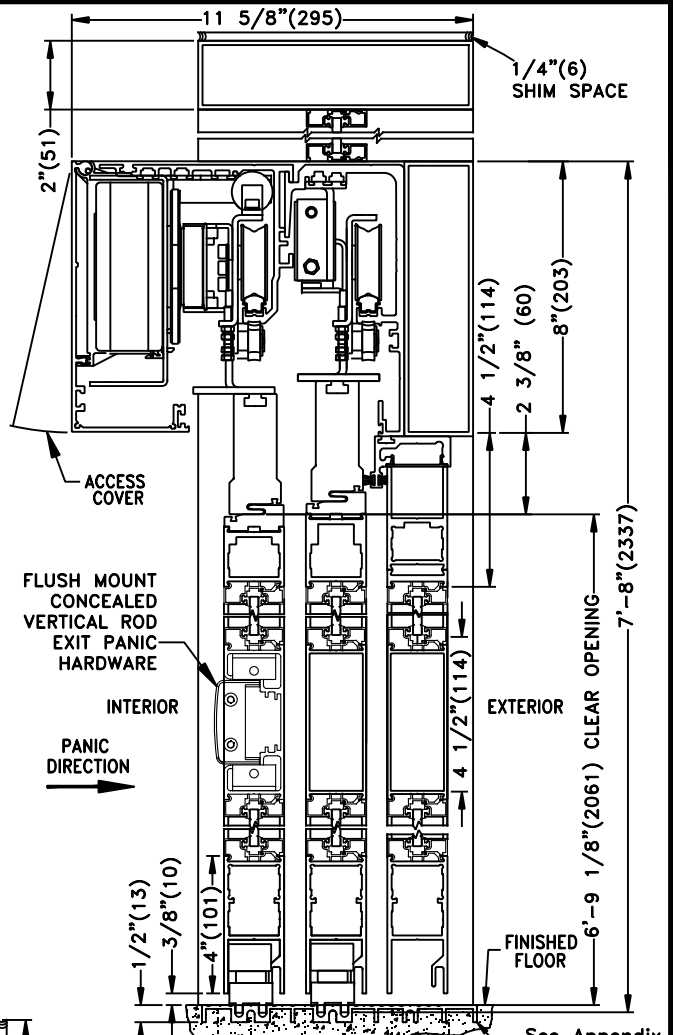


JOB NAME: _____ DATE: _____

DOOR LOCATION: _____ DOOR NO: _____ SHEET _____ OF _____



ELEVATION

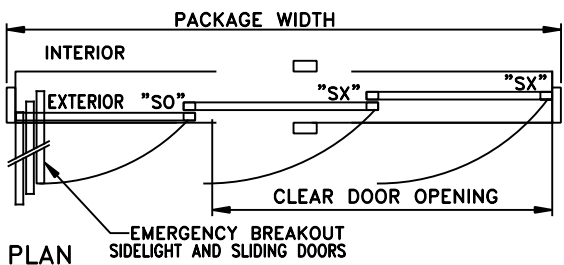


1 VERTICAL SECTION

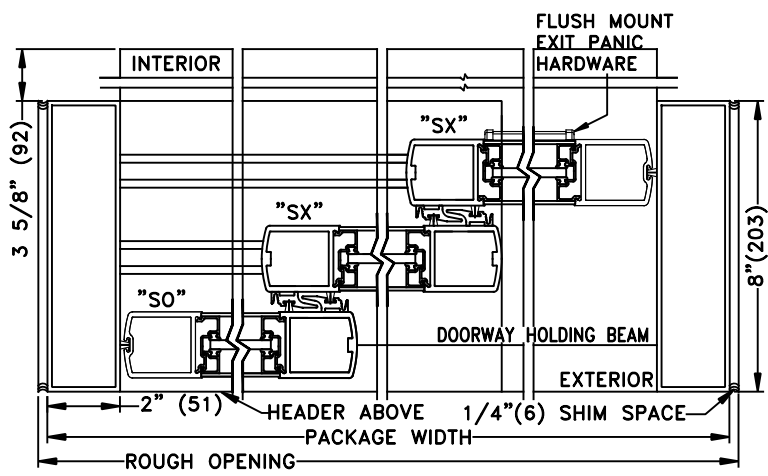
See Appendix For Details of TX9400 With Heavy Duty Drive System

SEE APPENDIX 2.1.H FOR SURFACE MOUNT CONCEALED VERTICAL ROD EXIT PANIC HARDWARE OPTION

THREE PANEL FORMULAS (PANEL OVERLAP 2 5/8")
 PANEL WIDTH=[(FRAME-4.125)+(5.25)]/3
 DOW=FRAME WIDTH-(4.125)-(PANEL WIDTH)-(7.25)
 FRAME WIDTH=(DOWx1.5)+17 23/32"
 EMERGENCY BREAKOUT=UNIT WIDTH-10 5/8"



PLAN



2 HORIZONTAL SECTION

- NOTES:
 1. DETAILS NOT TO SCALE.
 2. ELECTRICAL REQUIREMENTS:
 120VAC, 5AMPS MIN. TO OPERATOR BY ELECTICAL CONTRACTOR.
 3. DOOR PACKAGES ARE INDIVIDUALLY ENGINEERED TO FIT YOUR JOB REQUIREMENTS.

SAMPLE PACKAGE WIDTH INFORMATION

PKG. WIDTH	NOMINAL CLEAR DOOR OPENING	SLIDING DOOR / PANEL NOM. WIDTH	EMERGENCY BREAKOUT NOM. WIDTH
7'-0"(2134)	44 3/16"(1122)	28 5/16"(719)	75 3/8"(1915)
8'-0"(2438)	52 3/16"(1326)	32 5/16"(821)	87 3/8"(2219)
9'-0"(2743)	60 3/16"(1529)	36 5/16"(922)	99 3/8"(2524)