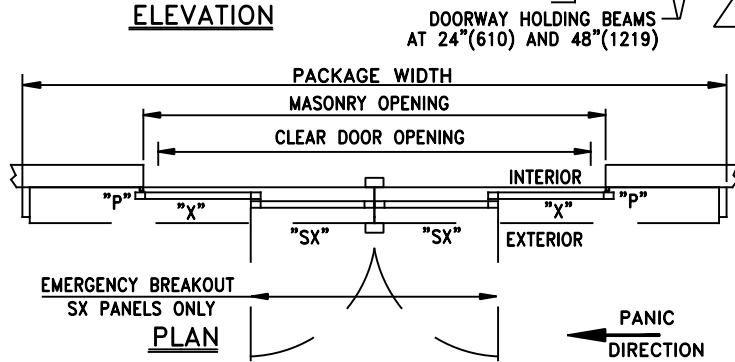
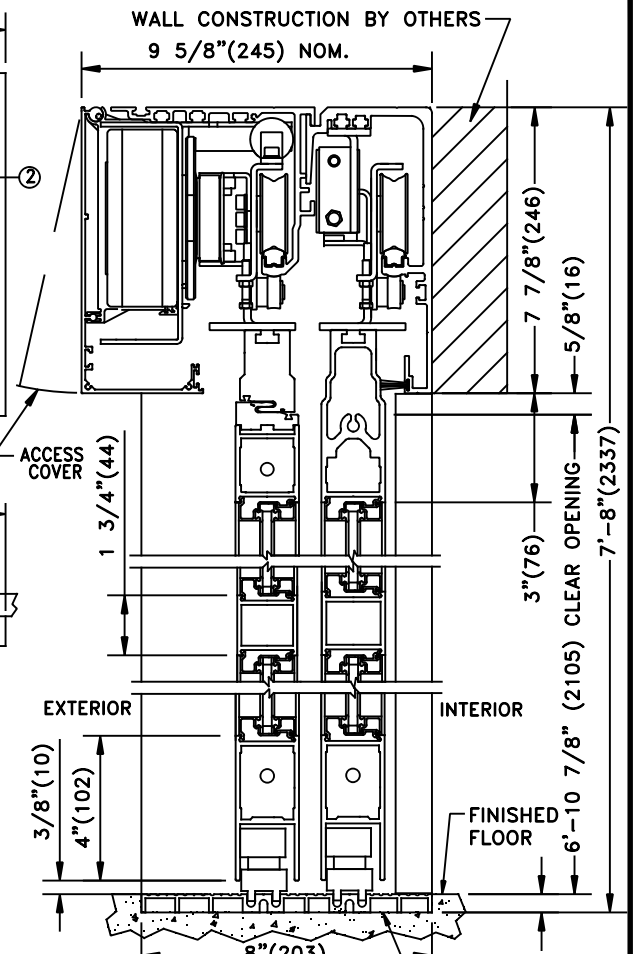
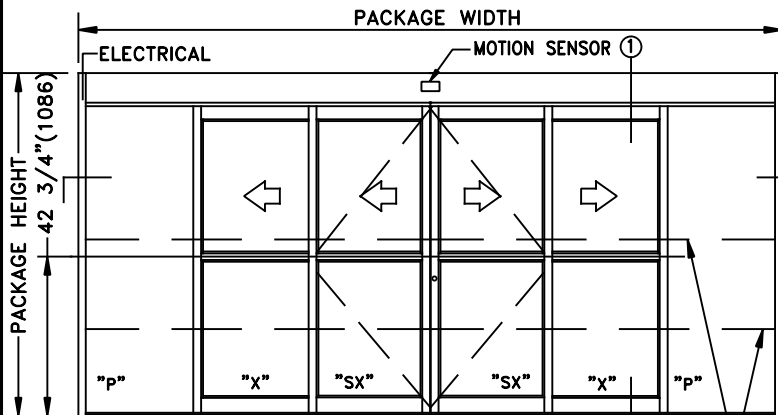
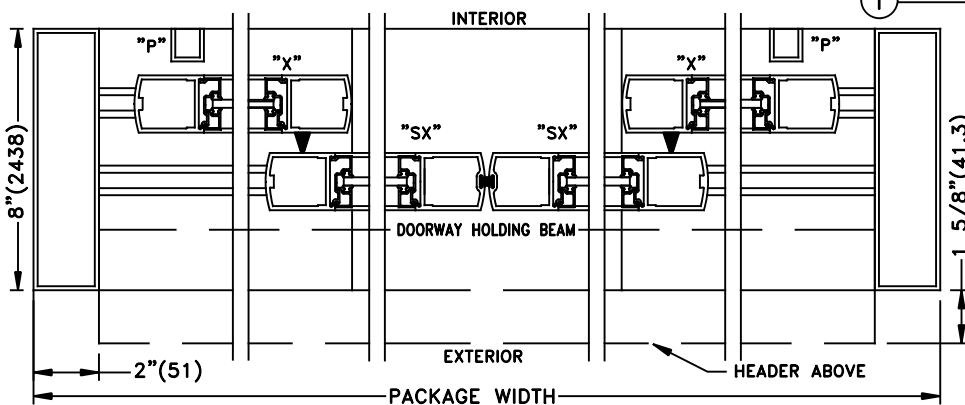


JOB NAME: \_\_\_\_\_ DATE: \_\_\_\_\_  
 DOOR LOCATION: \_\_\_\_\_ DOOR NO: \_\_\_\_\_ SHEET \_\_\_\_\_ OF \_\_\_\_\_



SIX PANEL FORMULAS (PANEL OVERLAP 2 5/8")  
 PANEL WIDTH=[(FRAME-4.125)+(10.5)]/6  
 DOW=FRAME WIDTH-(4.125)-(2 x PANEL WIDTH)-(14.5)  
 M.O.=DOW+14.5  
 FRAME WIDTH=(M.O.+4.125)+2[(M.O.)+(10.5)]/4  
 EMERGENCY BREAKOUT=(PANEL WIDTHx2)-5 3/8"



See Appendix For Threshold Options

See Appendix For Details of TX9400 With Heavy Duty Drive System

**SAMPLE PACKAGE WIDTH INFORMATION**

PKG. WIDTH	NOMINAL CLEAR DOOR OPENING	SLIDING DOOR / PANEL NOM. WIDTH	EMERGENCY BREAKOUT NOM. WIDTH
10'-0" (3048)	59 1/4" (1505)	21" (533)	36 3/4" (933)
12'-0" (3658)	75 1/4" (1911)	25" (635)	44 3/4" (1137)
14'-0" (4267)	91 1/4" (2318)	29" (737)	52 3/4" (1340)

- NOTES:
1. DETAILS NOT TO SCALE.
  2. ELECTRICAL REQUIREMENTS:  
 120VAC, 5AMPS MIN. TO OPERATOR BY ELECTRICAL CONTRACTOR.
  3. DOOR PACKAGES ARE INDIVIDUALLY ENGINEERED TO FIT YOUR JOB REQUIREMENTS.