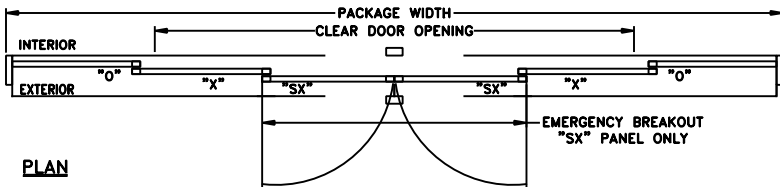
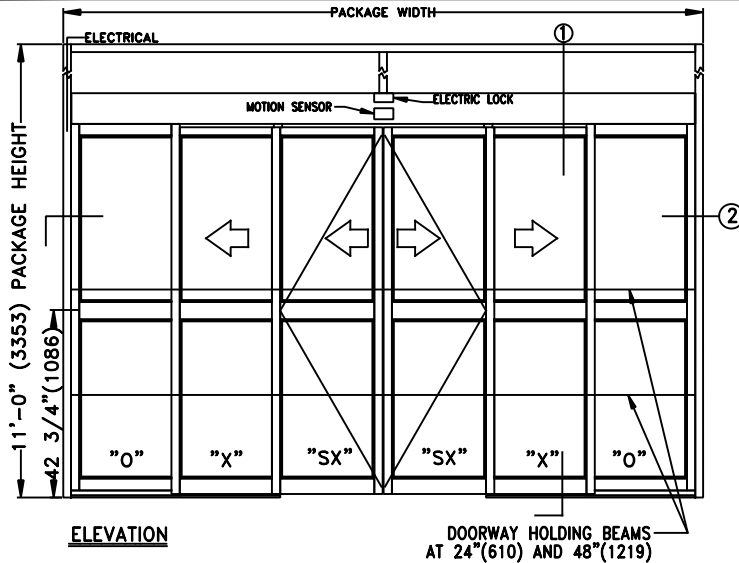




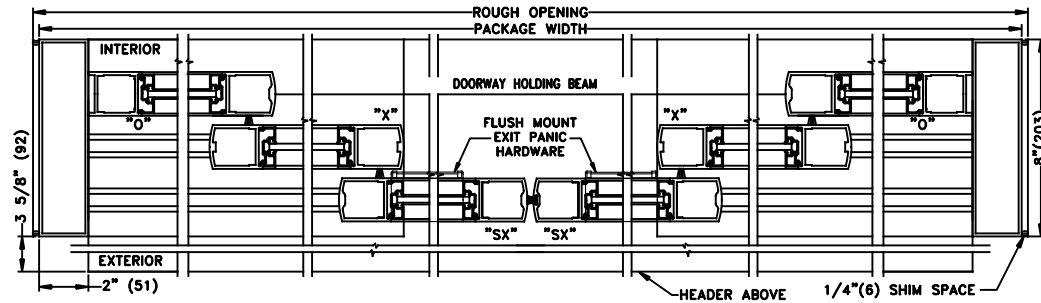
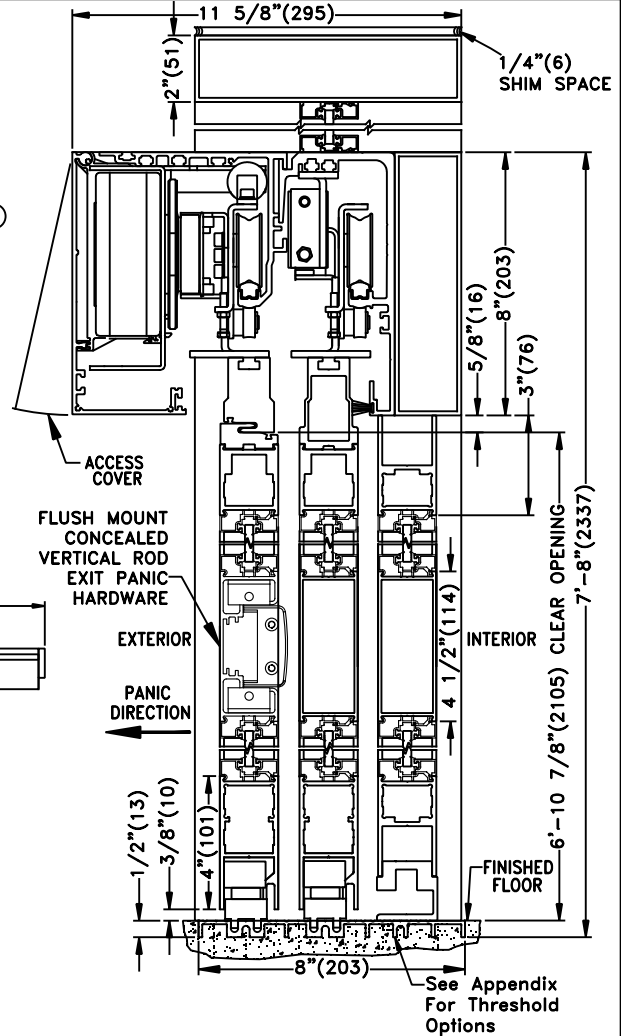
TX9420AC TELESCOPING AUTOMATIC SLIDING DOOR
 BI-PART OUTSIDE SLIDE APPLICATION W/TRANSOM (O-X-SX-SX-X-O)
 W/ ELECTRIC LOCK & FLUSH MOUNT EXIT PANIC HARDWARE

JOB NAME: _____ DATE: _____
 DOOR LOCATION: _____ DOOR NO: _____ SHEET _____ OF _____



SIX PANEL FORMULAS (PANEL OVERLAP 2 5/8")
 PANEL WIDTH=[(FRAME-4.125)+(10.5)]/6
 DOW=FRAME WIDTH-(4.125)-(2 x PANEL WIDTH)-(14.5)
 FRAME WIDTH=(DOWx1.5)+31 1/8"
 EMERGENCY BREAKOUT=(PANEL WIDTH x 2)-5 3/8"

SEE APPENDIX 2.1.H FOR SURFACE MOUNT
 CONCEALED VERTICAL ROD EXIT PANIC HARDWARE OPTION



② HORIZONTAL SECTION

① VERTICAL SECTION

See Appendix For
 Details of TX9400
 With Heavy Duty Drive
 System

- NOTES:
 1. DETAILS NOT TO SCALE.
 2. ELECTRICAL REQUIREMENTS:
 120VAC, 5AMPS MIN. TO OPERATOR BY ELECTRICAL CONTRACTOR.
 3. DOOR PACKAGES ARE INDIVIDUALLY ENGINEERED TO FIT YOUR
 JOB REQUIREMENTS.

SAMPLE PACKAGE WIDTH INFORMATION

PKG. WIDTH	NOMINAL CLEAR DOOR OPENING	SLIDING DOOR / PANEL NOM. WIDTH	EMERGENCY BREAKOUT NOM. WIDTH
10'-0" (3048)	59 1/4" (1505)	21" (533)	36 3/4" (933)
12'-0" (3658)	75 1/4" (1911)	25" (635)	44 3/4" (1137)
14'-0" (4267)	91 1/4" (2318)	29" (737)	52 3/4" (1340)