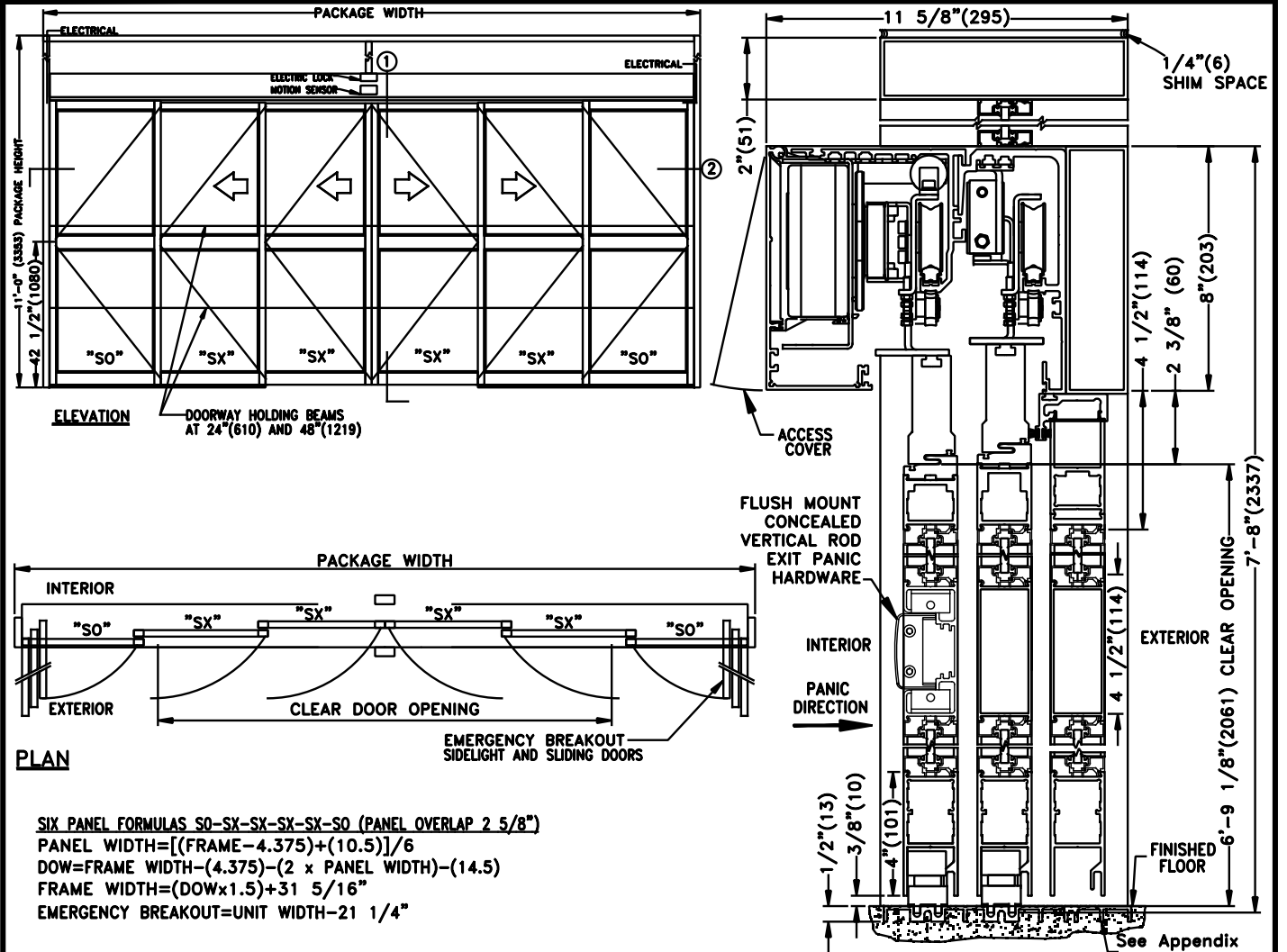




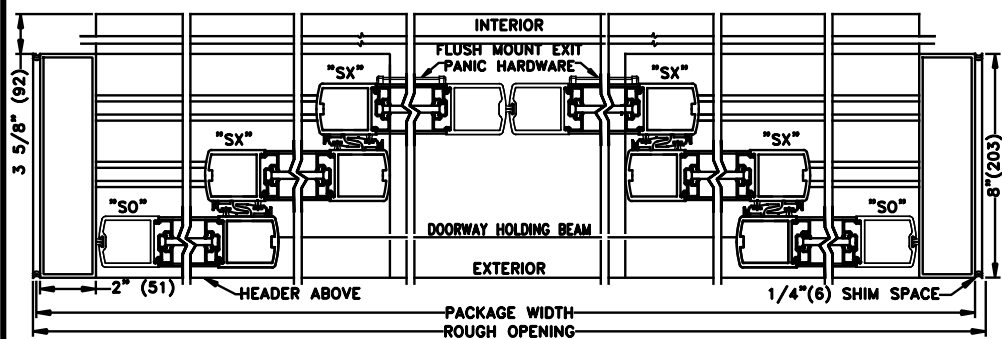
TX9430AC TELESCOPING AUTOMATIC SLIDING DOOR

BI-PART INSIDE SLIDE APPLICATION W/TRANSOM (SO-SX-SX-SX-SX-SO)
W/ ELECTRIC LOCK & FLUSH MOUNT EXIT PANIC HARDWARE

JOB NAME: _____ DATE: _____
DOOR LOCATION: _____ DOOR NO: _____ SHEET _____ OF _____



SIX PANEL FORMULAS SO-SX-SX-SX-SX-SO (PANEL OVERLAP 2 5/8")
 PANEL WIDTH=[(FRAME-4.375)+(10.5)]/6
 DOW=FRAME WIDTH-(4.375)-(2 x PANEL WIDTH)-(14.5)
 FRAME WIDTH=(DOWx1.5)+31 5/16"
 EMERGENCY BREAKOUT=UNIT WIDTH-21 1/4"



① **VERTICAL SECTION**
See Appendix For Details of TX9400 With Heavy Duty Drive System

SEE APPENDIX 2.2.F FOR SURFACE MOUNT CONCEALED VERTICAL ROD EXIT PANIC HARDWARE OPTION

SAMPLE PACKAGE WIDTH INFORMATION

PKG. WIDTH	NOMINAL CLEAR DOOR OPENING	SLIDING DOOR / PANEL NOM. WIDTH	EMERGENCY BREAKOUT NOM. WIDTH
10'-0" (3048)	59 1/8" (1502)	21" (533)	102 3/4" (2610)
12'-0" (3658)	75 1/8" (1908)	25" (635)	126 3/4" (3219)
14'-0" (4267)	91 1/8" (2315)	29" (737)	150 3/4" (3828)

- NOTES:**
1. DETAILS NOT TO SCALE.
 2. ELECTRICAL REQUIREMENTS: 120VAC, 5AMPS MIN. TO OPERATOR BY ELECTRICAL CONTRACTOR.
 3. DOOR PACKAGES ARE INDIVIDUALLY ENGINEERED TO FIT YOUR JOB REQUIREMENTS.