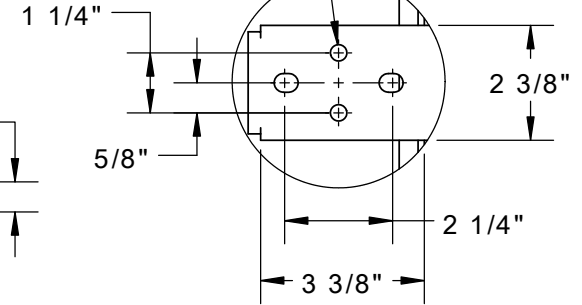
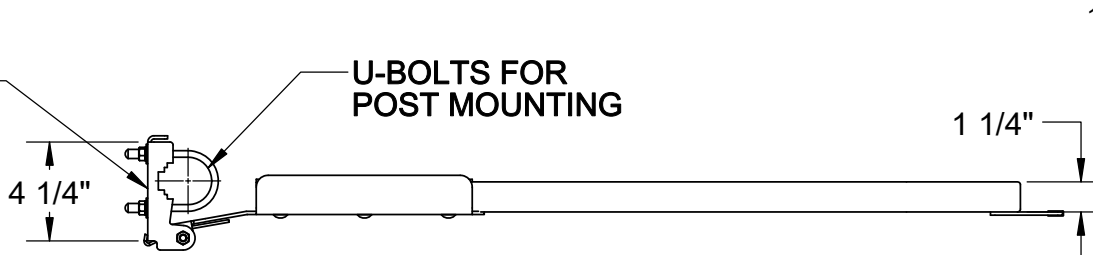


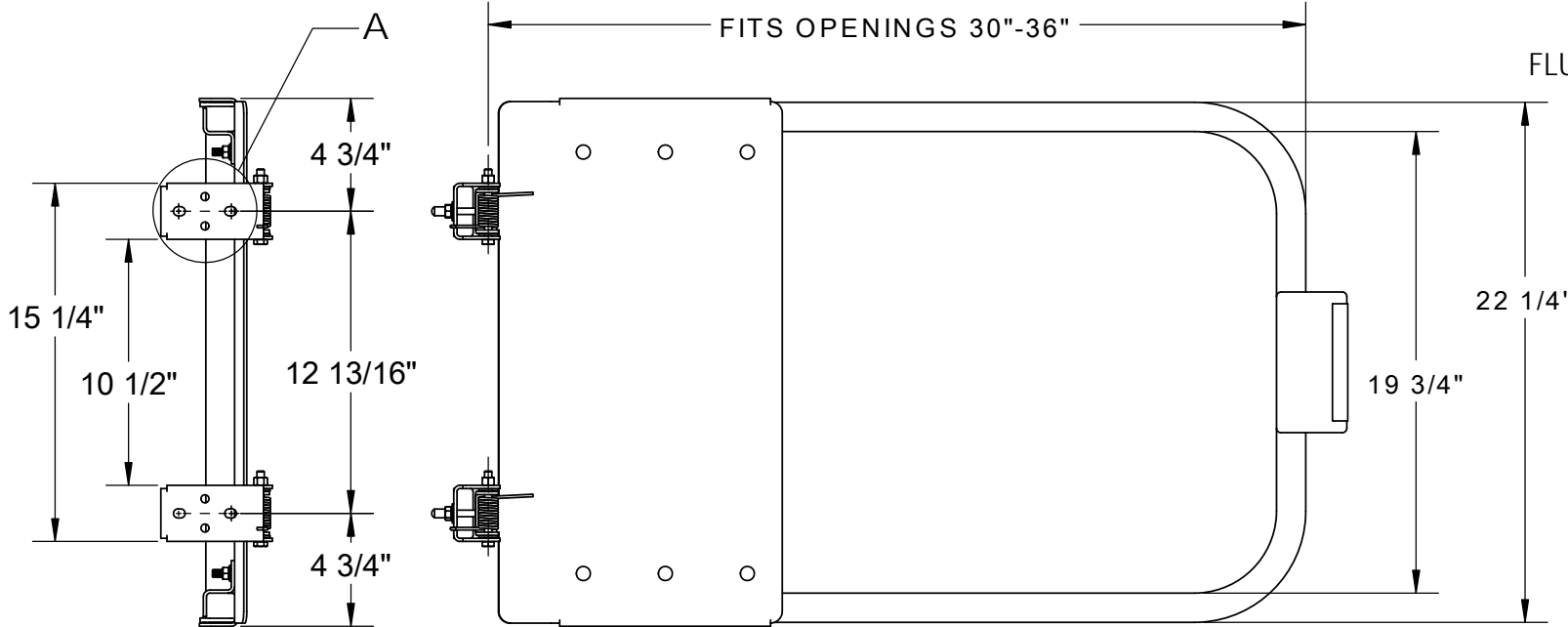
PART NUMBER	DESCRIPTION	MATERIAL	FINISH
500368	SELF CLOSING GATE- 33" (Y)	STEEL	POWDER COAT
500381	SELF CLOSING GATE- 33" (G)	STEEL	GALVANIZED
500386	SELF CLOSING GATE- 33" (SS)	STAINLESS STEEL	PLAIN
500391	SELF CLOSING GATE- 33" (SS) CAPPED	STAINLESS STEEL	PLAIN

HOLES FOR FLUSH MOUNTING

U-BOLTS FOR POST MOUNTING



DETAIL A
FLUSH MOUNT HOLES
SCALE 1 : 4
TYP. (2) PLACES



BlueWater

4064 PEAVEY ROAD
CHASKA, MN 55318

Tel : 952-448-2935
Toll Free : 866-933-2935
Fax : 952-448-3685
info@bluewater-mfg.com
www.safetypg.com

DESCRIPTION		
SELF CLOSING GATE - 33", SPECIFICATIONS		
SIZE A	DWG. NO. SEE DRAWING	REV. A
SCALE: DO NOT SCALE	SHEET 1 OF 1	