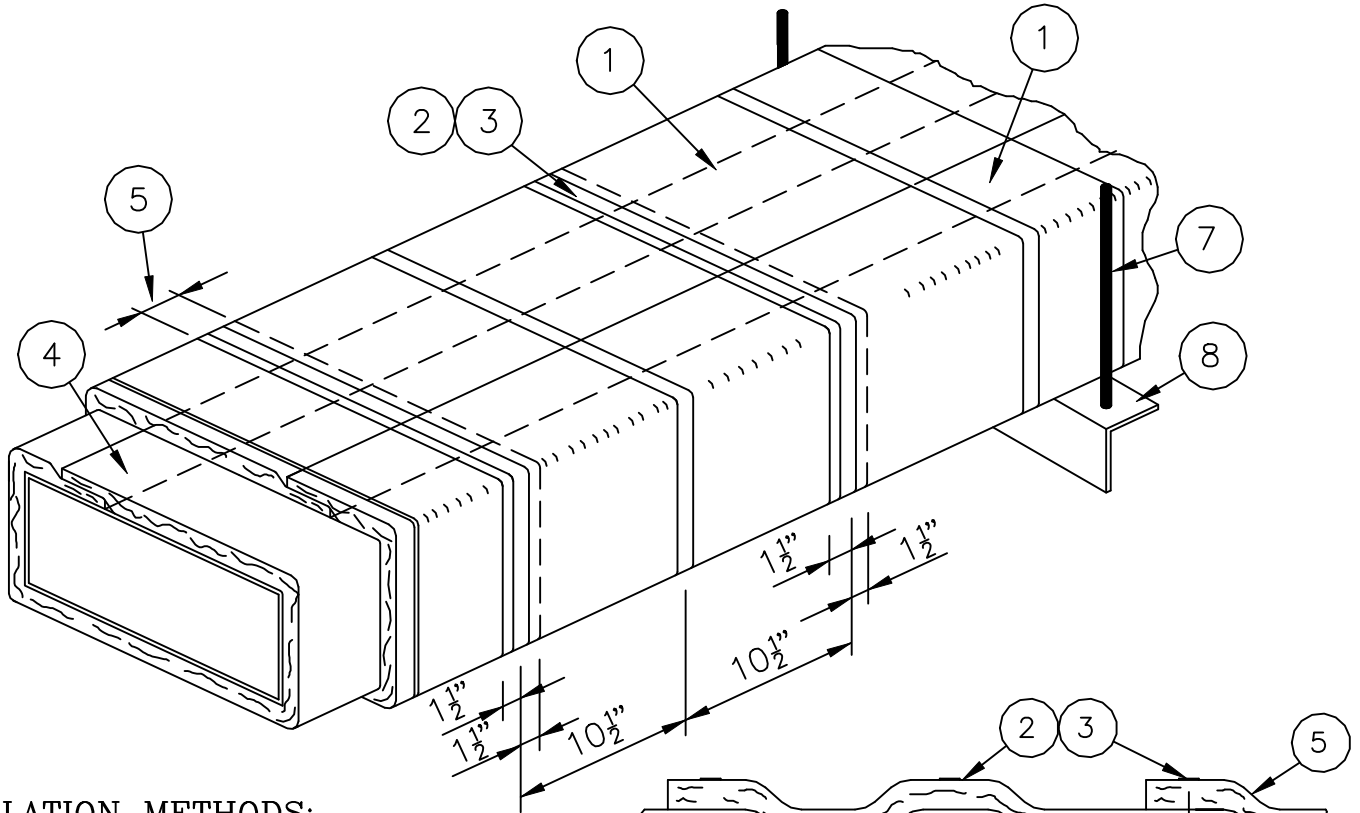
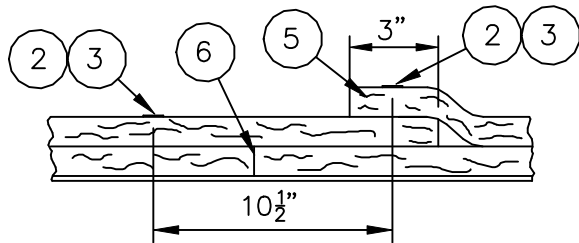


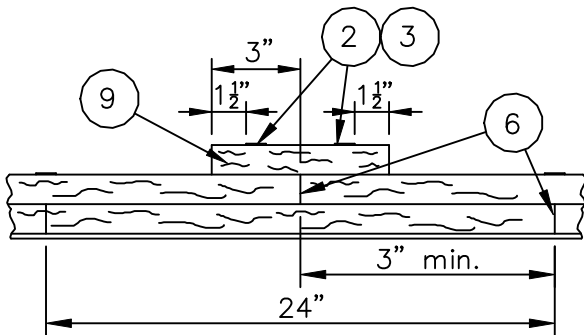
FyreWrap® Elite™ 1.5 Duct Insulation
Commercial Kitchen Grease Duct System
ASTM E2336/ICCES AC101 System
1 or 2 Hour Fire Rated Enclosure, Shaft Alternative
Zero Clearance To Combustibles



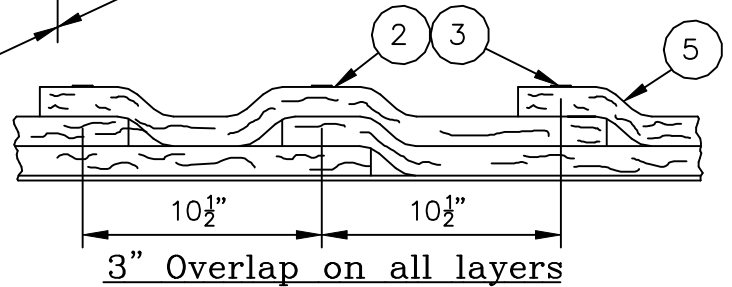
INSTALLATION METHODS:



Butt-Joint - 3" Overlap



Butt Joint - Collar



3" Overlap on all layers

Legend:	
1	FyreWrap® Elite™ 1.5 Duct Insulation, Two Layers (each 1.5", total thickness = 3")
2	Filament Tape (Temporary Hold)
3	Carbon or SS Banding Straps (Permanent Hold)
4	3" Minimum Longitudinal Overlap
5	3" Minimum Transverse Overlap
6	1" Compressed Butt Joint
7	Steel Hanger Rod
8	Steel Angle
9	6" wide FyreWrap® Elite™ 1.5 Collar

* Applies to both horizontal and vertical duct orientations

Revisions	Comments
Δ01-27-11	

SUBJECT- _____

LOCATION- _____

BLDG. NO.- _____ DATE- 10-08-2008

DRAWN- S.A.Rustay ENGINEER APPROVAL- _____

SCALE- N.T.S. DATE SIGNED- _____

DRAWING NO. FP-421	PROJECT NO.
-----------------------	-------------