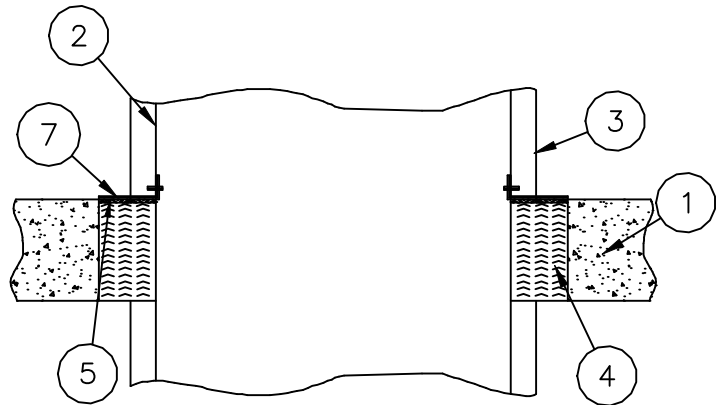
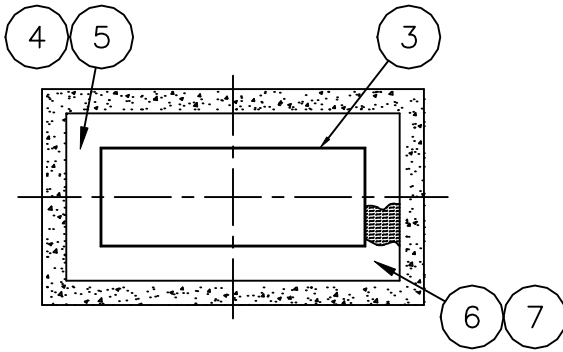
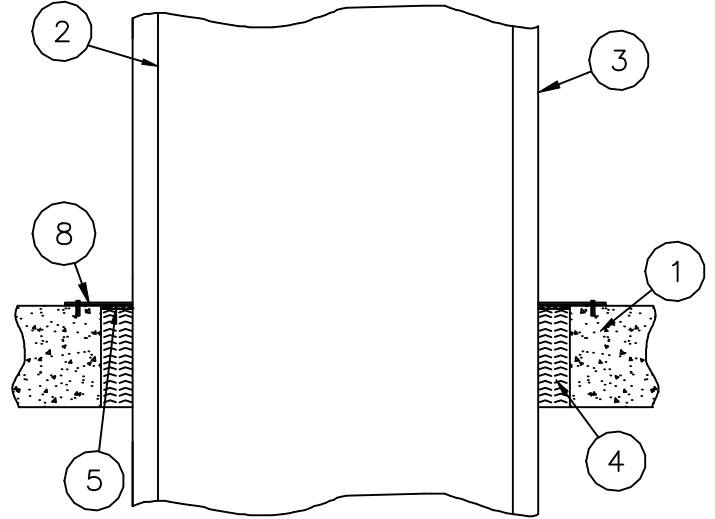
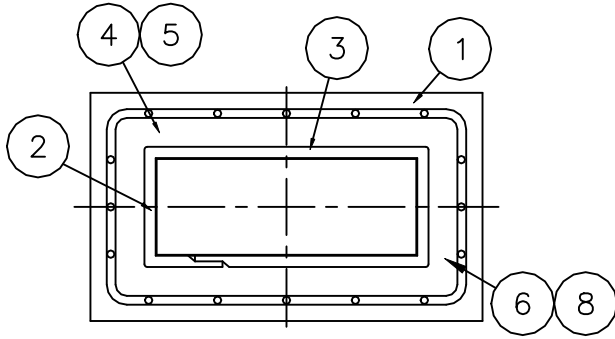


Through Penetration Firestop System

Intertek Design No. UNI/FRD 120-23, 120-24

ASTM E119 & ASTM E814

- F Rating - 2 Hr
- T Rating - 2 Hr



Legend:	
1	Concrete Floor Assembly, 4½" depth
2	HVAC duct, min 26 gauge, 1296 in ² area, max 54" width
3	FyreWrap® Elite® 1.5 Duct Insulation, One Layer
4	Unfaced FyreWrap® Elite® 1.5 Blanket, 4½" depth Compressed 33%
5	STI SpecSeal SSS, 1/4" Plus ¾" Overlap On Concrete and duct insulation
6	Annular Space, 1" to 2"
7	Duct Reinforcement: ½" thk. steel angle (1" tall vertical leg x horizontal leg dim. at least equal to width of annular space) Attach using ¼" dia. steel pop-rivets. Spaced max 6" O.C.
	OR
8	or Min. ¼" thk. steel plate over the firestop sealant (compressing ductwrap ¼" and extending onto floor surface 2") Attach with ¼" dia. concrete screws, spaced 6" O.C.