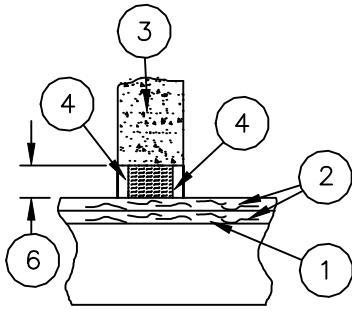
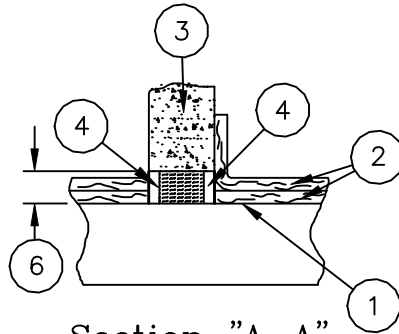


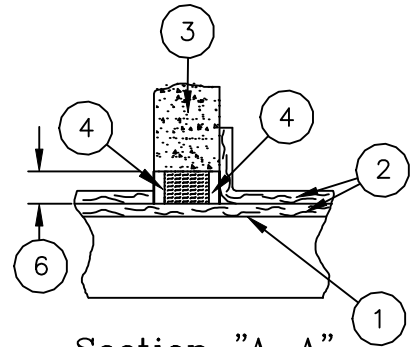
FyreWrap® Elite® 1.5 Duct Insulation Through Penetration Firestops Wall
 Intertek Design No. UNI/BI 120-02 F-Rating=2 Hrs. T-Rating=2 Hrs



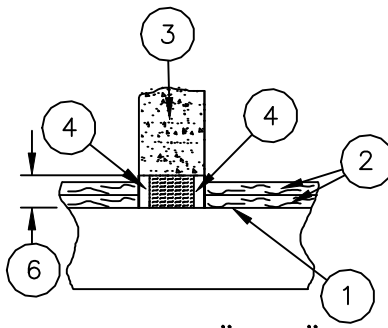
Section "A-A"
Option 1



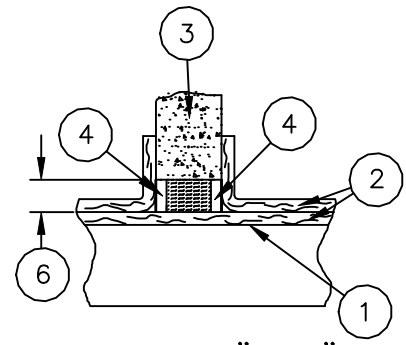
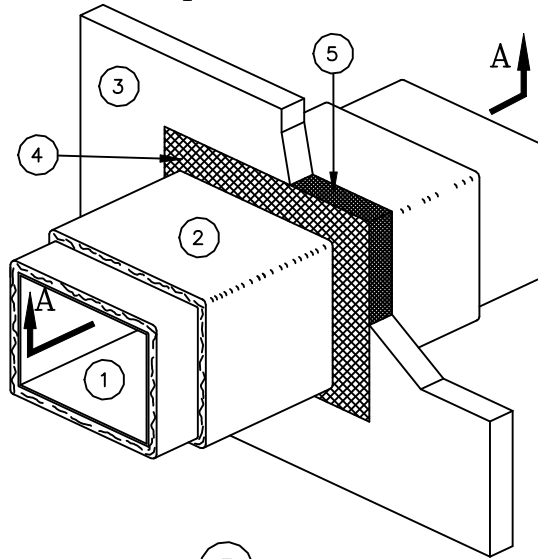
Section "A-A"
Option 2



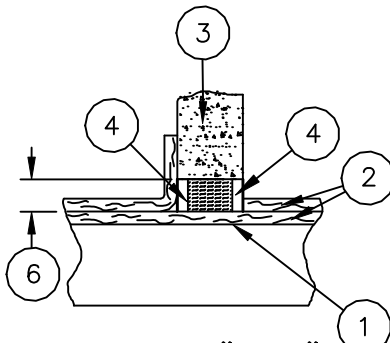
Section "A-A"
Option 3



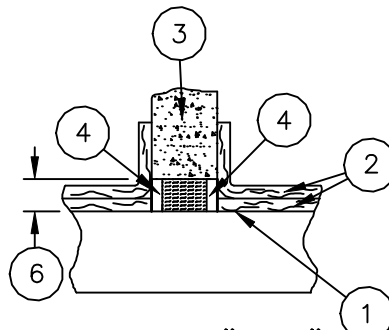
Section "A-A"
Option 8



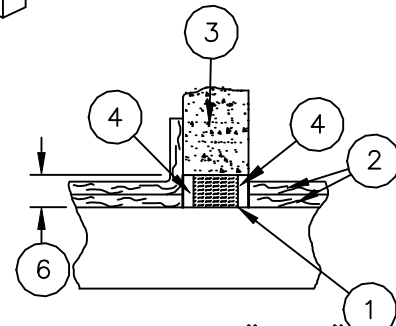
Section "A-A"
Option 4



Section "A-A"
Option 7



Section "A-A"
Option 6



Section "A-A"
Option 5

Legend:	
1	Grease Duct, max. 2401in ² area, 49" max width
2	FyreWrap® Elite® 1.5 Duct Insulation, Two Layers
3	Fire-Resistive Concrete, Gypsum, or CMU block wall assembly, 2 hr. rated
4	Firestop Sealant, 5/8" depth, overlapping on wall and duct min. 1/2" 3M Fire Barrier 1000NS or Hilti FS-ONE or STI SpecSeal SSS or Tremco FyreSil
5	Unfaced FyreWrap® Elite® 1.5 or 4 PCF Mineral Wool compressed 50% option 1 and 33% options 2-8, recessed 5/8" from both sides of wall
6	Annular space, 1/2" to 4 1/2"

Revisions	Comments



SUBJECT- _____

LOCATION- _____

BLDG. NO.- _____ DATE- 04-04-2011

DRAWN- S.A.Rustay ENGINEER APPROVAL- _____

SCALE- N.T.S. DATE SIGNED- _____

DRAWING NO. FP-690
PROJECT NO.