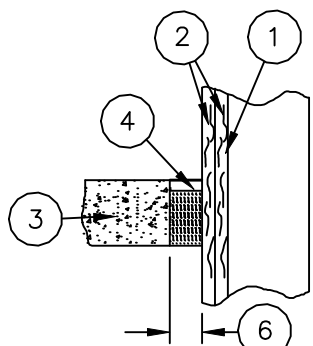
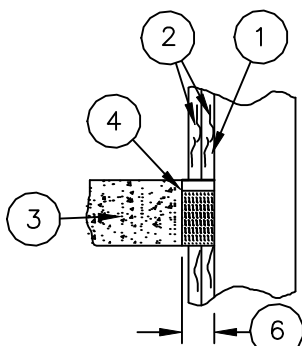


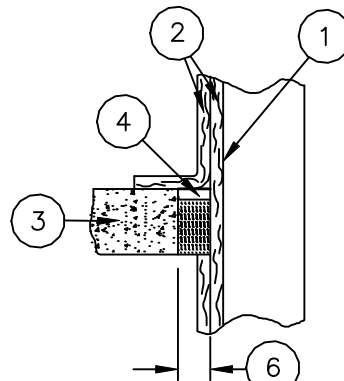
FyreWrap® Elite® 1.5 Duct Insulation Through Penetration Firestops Floor/Ceiling
Intertek Design No. UNI/BI 120-02 F-Rating=2 Hrs. T-Rating=2 Hrs



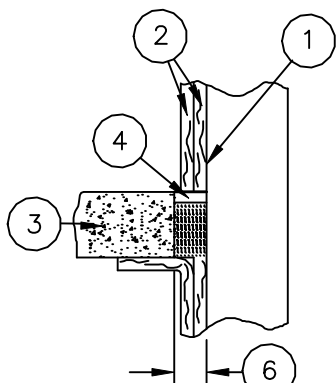
Section "A-A"
Option 1



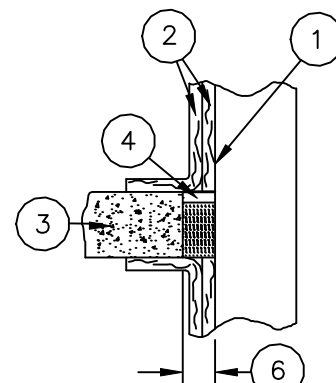
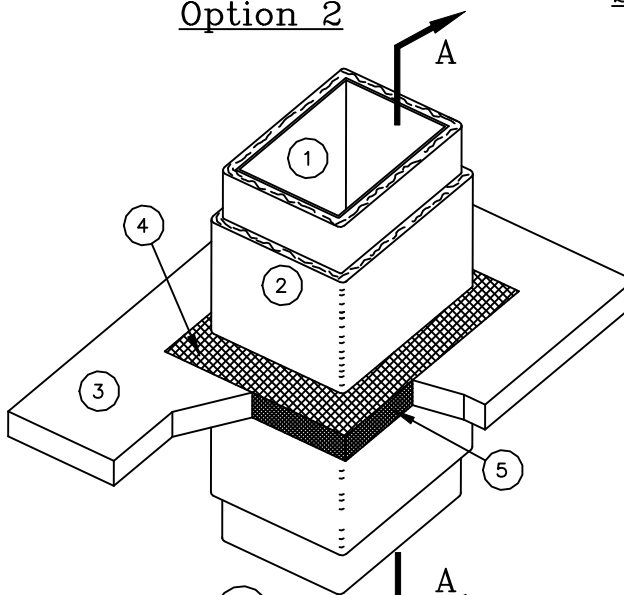
Section "A-A"
Option 2



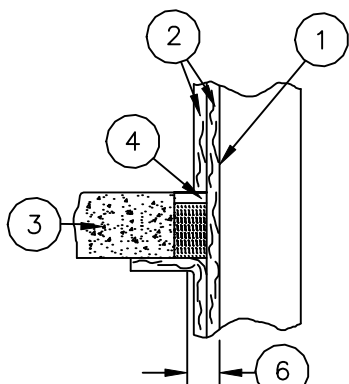
Section "A-A"
Option 3



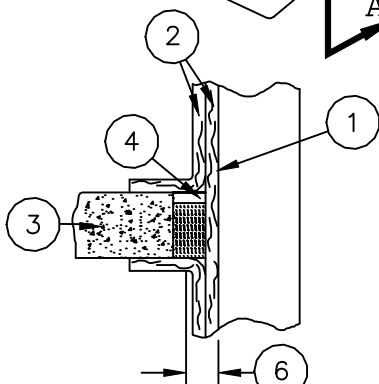
Section "A-A"
Option 8



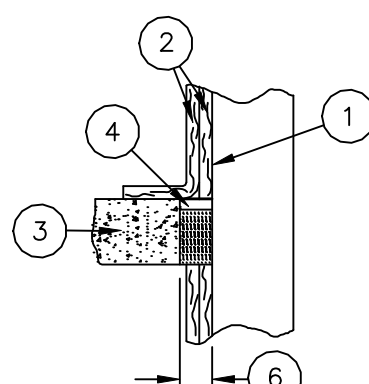
Section "A-A"
Option 4



Section "A-A"
Option 7



Section "A-A"
Option 6



Section "A-A"
Option 5

Legend:	
1	Grease Duct, max. 240in ² area, 49" max width
2	FyreWrap® Elite® 1.5 Duct Insulation, Two Layers
3	Fire-Resistive Concrete Floor/Ceiling assembly, 2 hr. rated
4	Firestop Sealant, 3/8" depth, overlapping on floor and duct min. 1/2" 3M Fire Barrier 1000NS or Hilti FS-ONE or STI SpecSeal SSS or Tremco FyreSil
5	Unfaced FyreWrap® Elite® 1.5 or 4 PCF Mineral Wool compressed 50% option 1 and 33% options 2-8, recessed 3/8" from top side of floor
6	Annular space, 1/2" to 4 1/2"

Revisions	Comments



SUBJECT- _____		DRAWING NO. FP-691
LOCATION- _____		
BLDG. NO.- _____	DATE- 04-04-2011	PROJECT NO.
DRAWN- S.A.Rustay	ENGINEER APPROVAL- _____	
SCALE- N.T.S.	DATE SIGNED- _____	