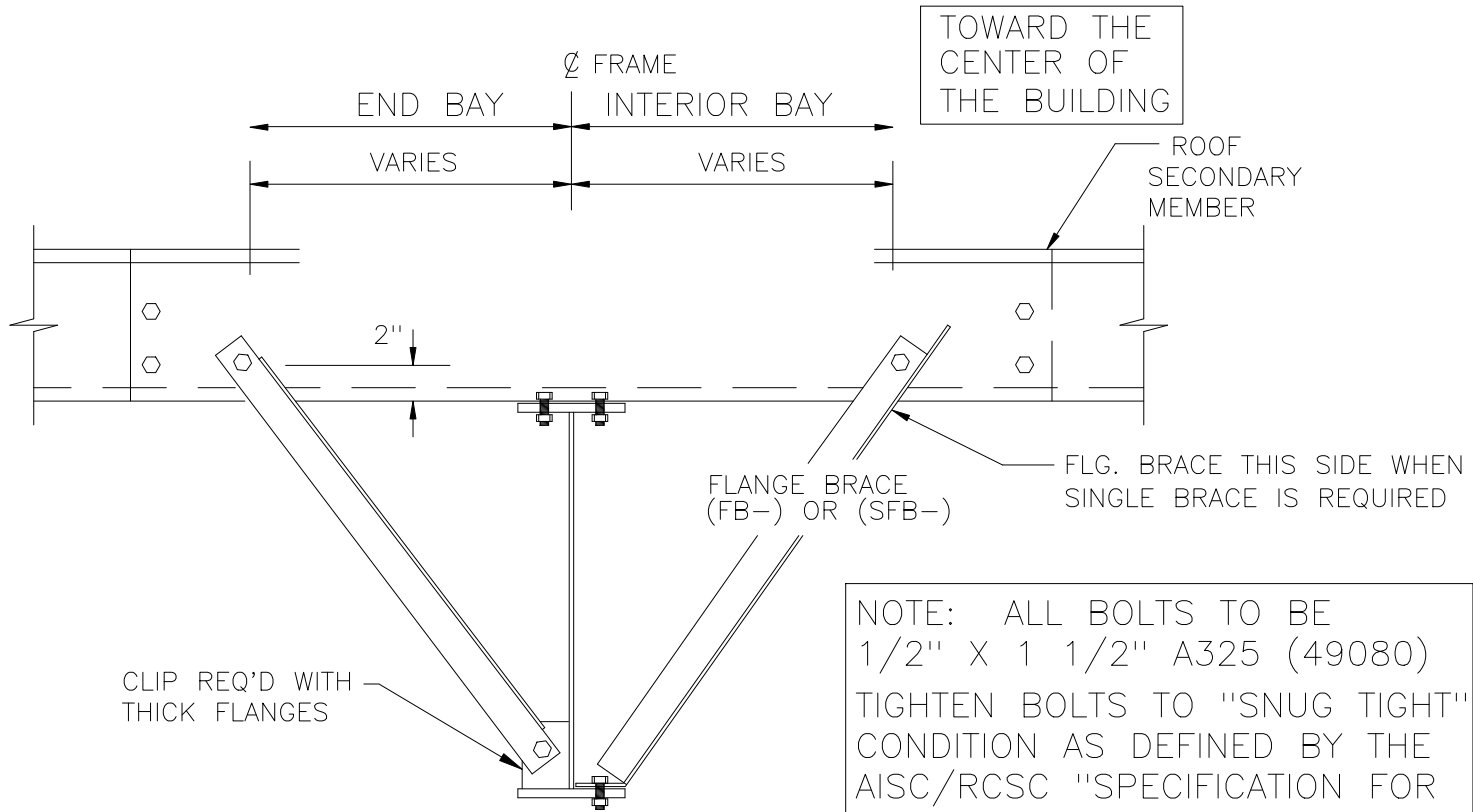


11 1/2" PURLINS REQUIRE 3 BOLTS AT EACH END OF PURLIN LAP.



NOTE: ALL BOLTS TO BE 1/2" X 1 1/2" A325 (49080) TIGHTEN BOLTS TO "SNUG TIGHT" CONDITION AS DEFINED BY THE AISC/RCSC "SPECIFICATION FOR STRUCTURAL JOINTS USING ASTM A325 OR A490 BOLTS"

FLANGE BRACE REQUIREMENTS:

- RULE#1- ALL FLANGE BRACES ON CROSS SECTIONS MUST BE INSTALLED.
- RULE#2- SINGLE FLANGE BRACES ARE REQUIRED WHEN PART MARK ON CROSS SECTION IS NOT ACCOMPANIED BY (2).
- RULE#3- FLANGE BRACES ARE REQUIRED BOTH SIDES OF THE FRAME WEB WHEN PART MARK IS ACCOMPANIED BY (2).
- RULE#4- WHENEVER POSSIBLE, PLACE SINGLE BRACES TOWARD THE CENTER OF THE BUILDING.
- RULE#5- WHENEVER POSSIBLE, PLACE ALL SINGLE BRACES ON THE SAME SIDE OF THE FRAME WEB.

TYPICAL FLANGE BRACE CONNECTIONS

BR06BD	

CONTINUOUS PURLIN LAP SHOWN, CONTINUOUS GIRT AND SIMPLE PURLIN AND GIRT SIMILAR.