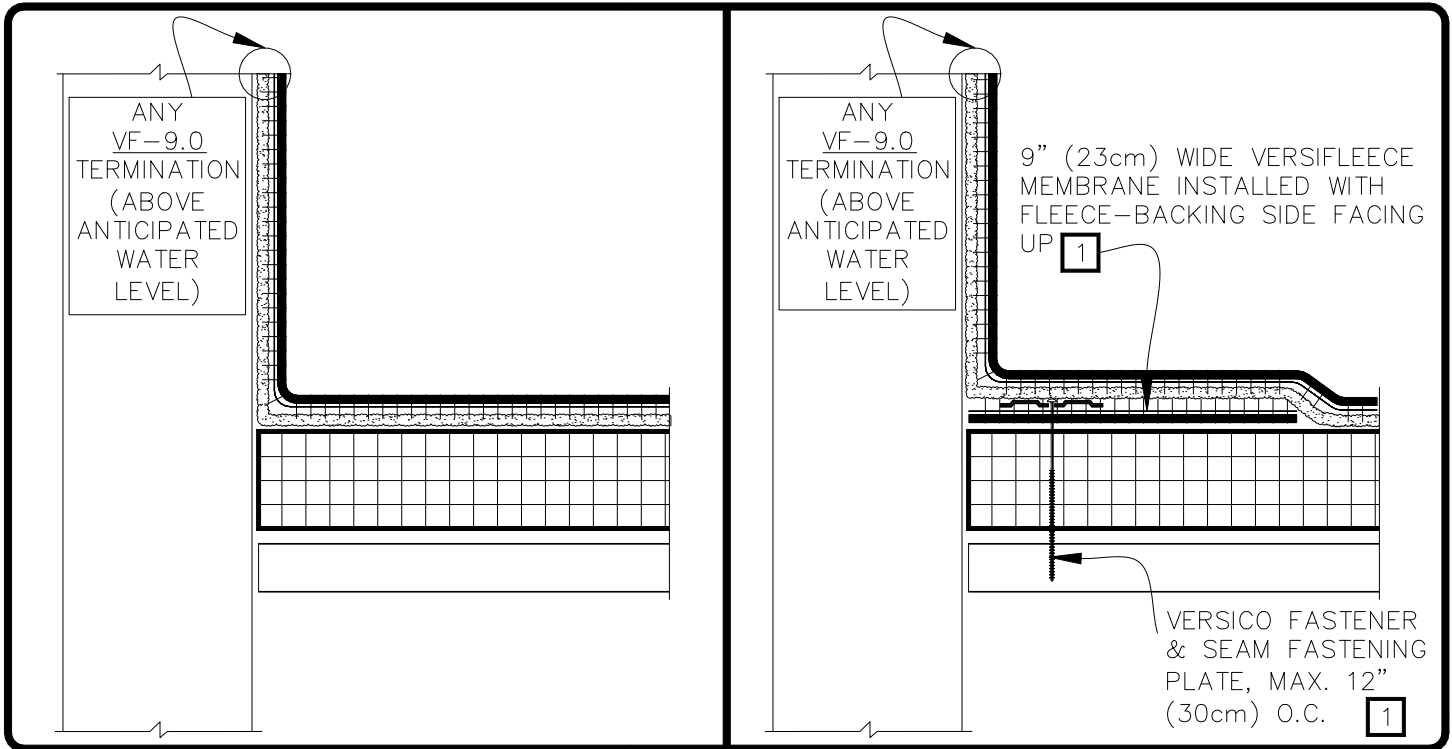


CAUTION

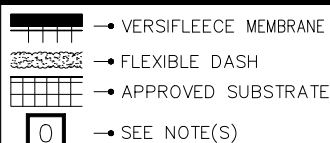
REFER TO DETAIL VF-12C WHEN USING AQUA BASE 120 ADHESIVE OR HYDROBOND.

## NOTES:

1. MECHANICALLY FASTENED BASE SECUREMENT IS REQUIRED WHEN ANY ONE OF THE FOLLOWING MAY OCCUR:
  - 1.1. SPECIFIED WARRANTIES GREATER THAN 20-YEARS.
  - 1.2. WARRANTY WIND SPEEDS GREATER THAN 90MPH.
  - 1.3. PROJECTS WITH CONTROL OR EXPANSION JOINTS OR ANTICIPATED BUILDING MOVEMENT.
  - 1.4. WHEN VERSIFLEECE MEMBRANE IS INSTALLED DIRECTLY OVER AN EXISTING SINGLE-PLY ROOF.
2. WHEN THE USE OF FLEXIBLE DASH (FULL SPRAY) IS NOT FEASIBLE ON THE VERTICAL SUBSTRATE, SEE APPROPRIATE TDB FOR INSTALLATION INSTRUCTIONS FOR BONDING ADHESIVE.



PARAPET/CURB WITH  
CONTINUOUS MEMBRANE  
— FULL COVERAGE



THERMOPLASTIC  
VERSIFLEECE  
ADHERED

VF-12B.2A