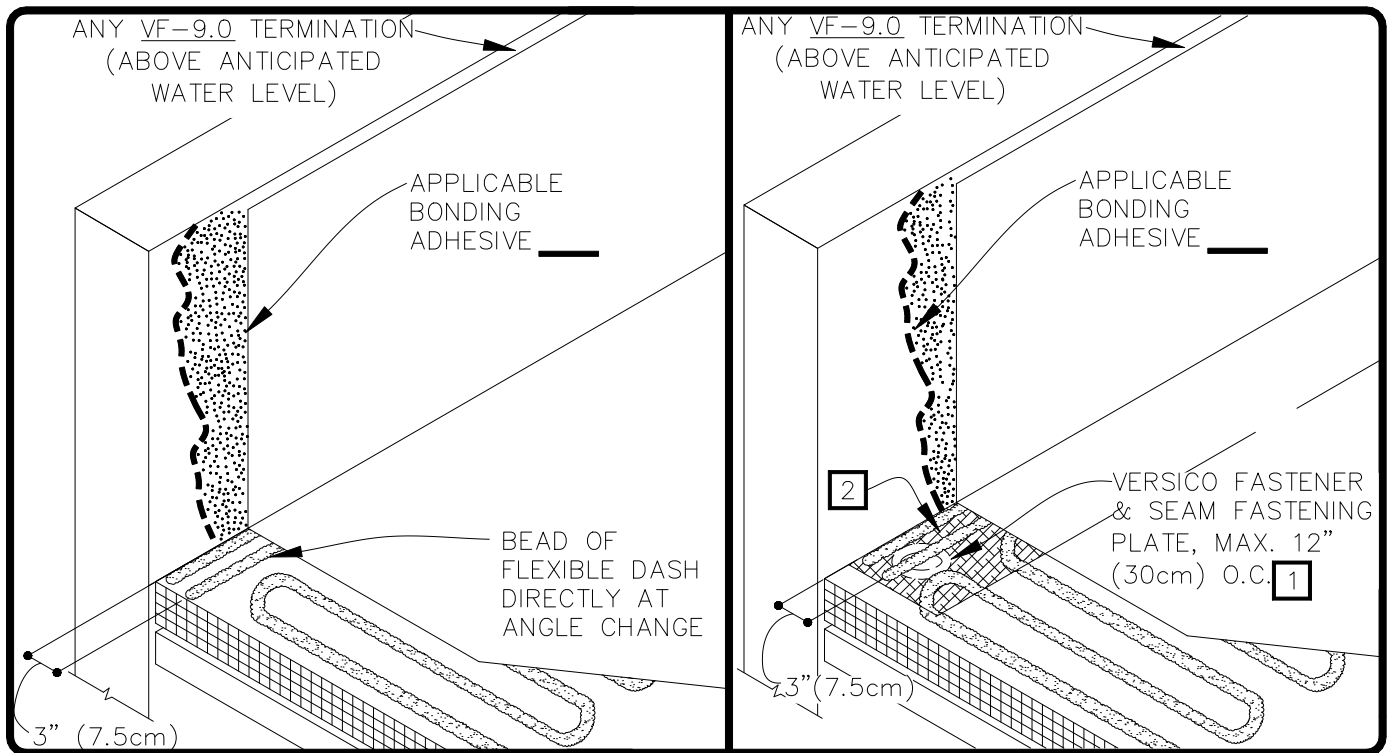


CAUTION

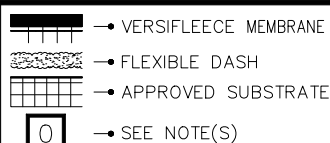
REFER TO DETAIL VF-12.3 WHEN USING AQUA BASE 120 ADHESIVE OR HYDROBOND.

NOTES:

1. MECHANICALLY FASTENED BASE SECUREMENT IS REQUIRED WHEN ANY ONE OF THE FOLLOWING MAY OCCUR:
 - 1.1. SPECIFIED WARRANTIES GREATER THAN 20-YEARS.
 - 1.2. WARRANTY WIND SPEEDS GREATER THAN 90MPH.
 - 1.3. PROJECTS WITH CONTROL OR EXPANSION JOINTS OR ANTICIPATED BUILDING MOVEMENT.
 - 1.4. WHEN VERSIFLEECE MEMBRANE IS INSTALLED DIRECTLY OVER AN EXISTING SINGLE-PLY ROOF.
2. 9" (23cm) WIDE VERSIFLEECE MEMBRANE INSTALLED WITH FLEECE-BACKING SIDE FACING UP.
3. WHEN USING 60 OR 80-MIL REINFORCED THERMOPLASTIC MEMBRANE FLASHING, APPLY A 4-1/2" (11cm) DIAMETER THERMOPLASTIC "T-JOINT" COVER AT ALL FIELD SPLICE INTERSECTIONS.



PARAPET/CURB WITH
CONTINUOUS MEMBRANE
— BEAD APPLIED



THERMOPLASTIC
VERSIFLEECE
ADHERED

VF-12B.2B