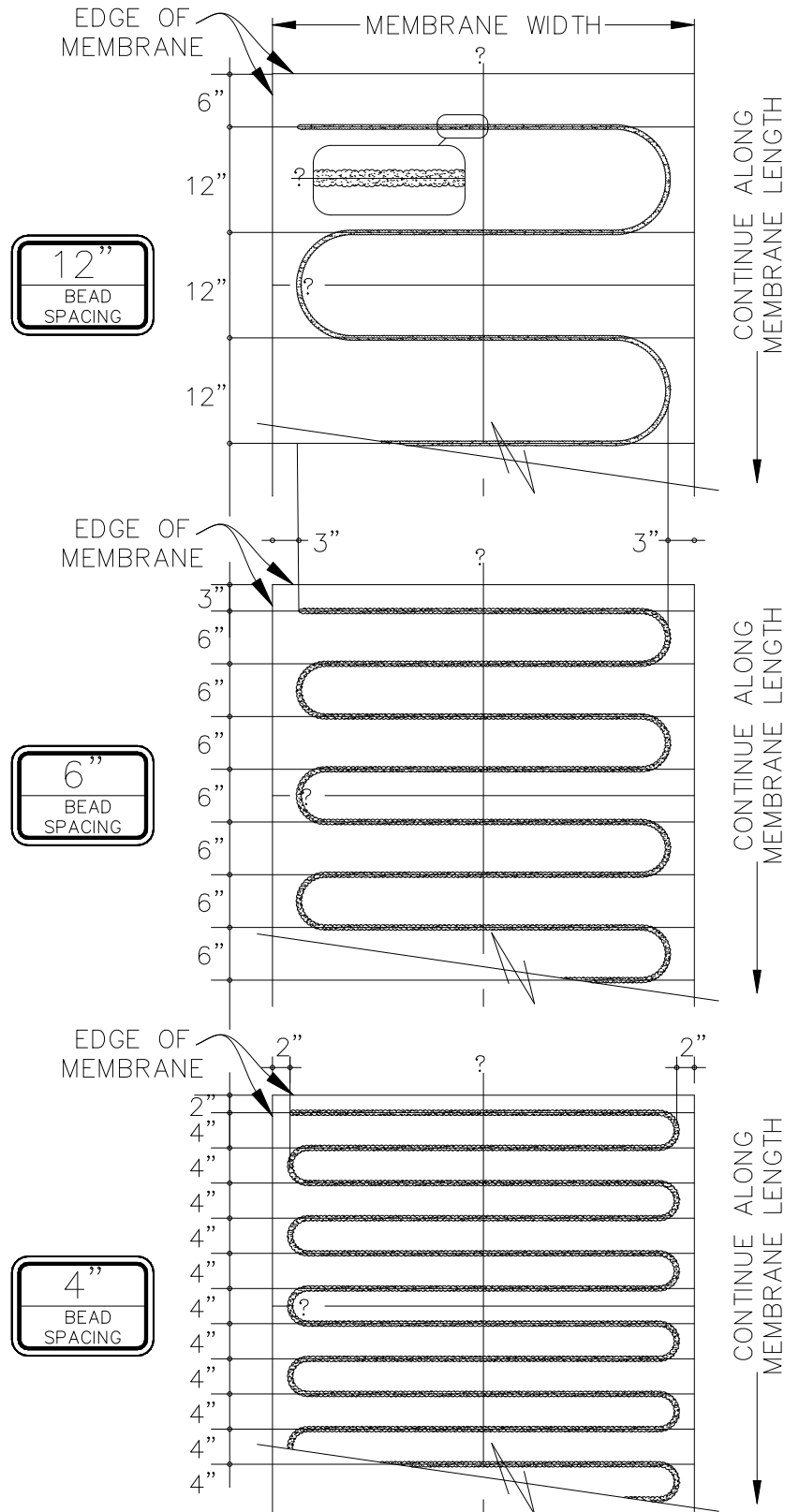


NOTES:

1. REFER TO VERSICO SPECIFICATIONS FOR PRODUCT DATA SHEETS FOR APPROPRIATE BEAD SPACING BASED UPON THE BUILDING HEIGHT, WARRANTY TERM AND ACCEPTABLE SUBSTRATE.
2. THE SURFACE TO WHICH ADHESIVE IS TO BE APPLIED SHALL BE DRY, FREE OF FINES, PROTRUSIONS, SHARP EDGES, LOOSE AND FOREIGN MATERIALS, OIL AND GREASE. AREA SHOULD BE CLEANED WITH AN AIR BLOWER.
3. PREVIOUSLY UNEXPOSED ASPHALT OR RESIDUE MUST BE PRIMED WITH VERSICO CAVGRIP 3V, 702 OR 702LV PRIMER.
4. SEAL ALL GAPS IN THE CONCRETE DECK WITH VERSICO 725TR OR OTHER SUITABLE MATERIAL TO AVOID CONDENSATION ISSUES OR FILL WITH VERSICO INSULATION ADHESIVE.
5. UNROLL 10' TO 15' OF MEMBRANE TO ENSURE IT IS PROPERLY ALIGNED AND FOLD UNROLLED SECTION BACK OVER ROLL.
6. APPLY FLEXIBLE DASH ADHESIVE OVER THE SUBSTRATE AREA TO BE COVERED BY THE MEMBRANE THAT IS FOLDED BACK.
7. ONCE THE FLEXIBLE DASH ADHESIVE IS APPLIED IN PLACE AND HAS BEGUN TO RISE APPROXIMATELY 8" IN HEIGHT AND DEVELOP STRINGS WHEN TOUCHED WITH A HP SPLICE WIPE, SLIDE THE MEMBRANE INTO THE ADHESIVE.
8. ROLL THE MEMBRANE USING A 30" WIDE, 150 POUND WEIGHTED SEGMENTED STEEL ROLLER, TO SET THE MEMBRANE BACK INTO THE ADHESIVE.

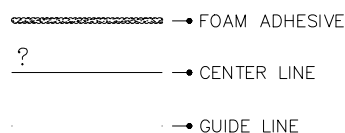


FEET TO CENTIMETERS	
4'	8'
122	244

INCHES TO CENTIMETERS																		
inch	1/4"	1/2"	3/4"	1"	1.5"	2"	2.5"	3"	4"	5"	6"	7"	8"	9"	10"	11"	12"	
cm	1	1.5	2	2.5	4	5	6.5	7.5	10	13	15	18	20	23	25	28	30	



VERSIFLEECE MEMBRANE
ATTACHMENT USING BEAD
ADHESIVE



ADHERED
SYSTEM

VF-27