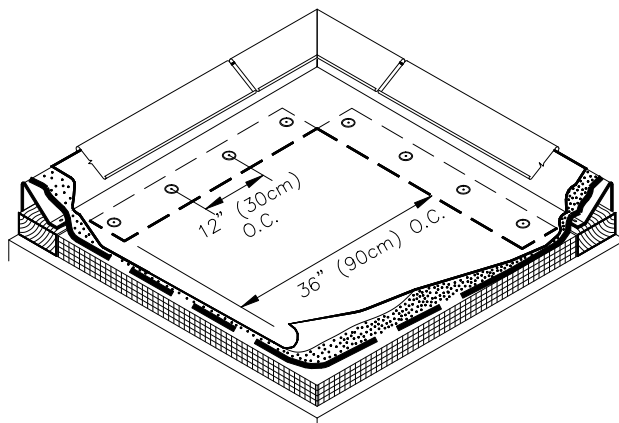


## NOTE:

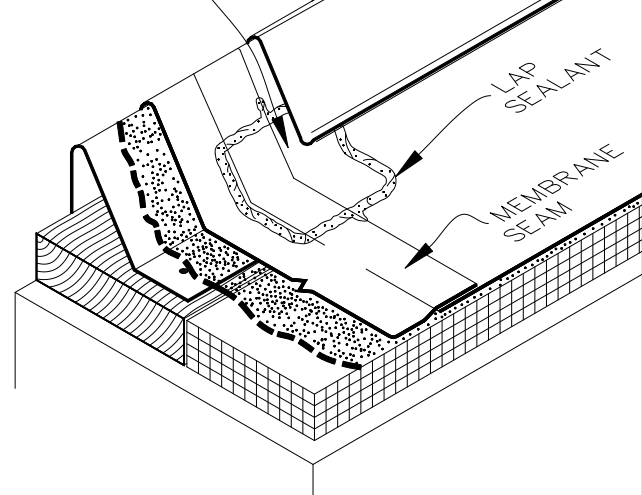
1. MAXIMUM MEMBRANE THICKNESS GOING OVER THE WATER DAM IS 60-MIL. FOR THICKER MEMBRANES, RUN FIELD SHEET UNDER THE WATER DAM AND STRIP-IN WITH MAXIMUM 60-MIL MEMBRANE.
2. USE VGMA-1A FOR MECHANICALLY FASTENED SYSTEMS AND VGB-1.1 FOR BALLASTED SYSTEMS.

AT CORNERS, 6" (15cm) WIDE QUICK APPLIED RTS MUST BE INSTALLED 12" (30cm) MAXIMUM FROM THE BASE OF THE WATER DAM AND EXTEND 36" (90cm) MINIMUM IN EACH DIRECTION.



CORNER REINFORCEMENT

QUICK-APPLIED T-JOINT COVER AND EPDM PRIMER

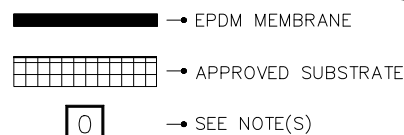


MEMBRANE SEAM AT EDGE

MAXIMUM WARRANTY: 20 YEARS



VERSITRIM 200



THERMOSET  
ROOFING SYSTEM  
VGC-1.1