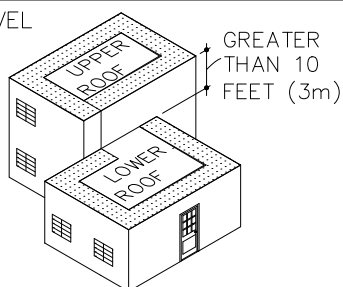


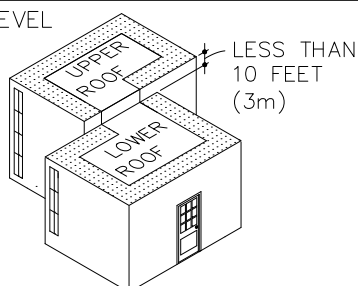
# GUIDELINES FOR ROOF PERIMETER ZONES FOR MECHANICALLY ATTACHED ROOF SYSTEM

 PERIMETER ZONES

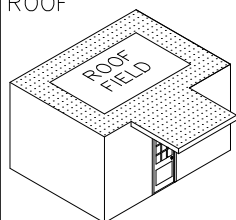
## SPLIT LEVEL ROOFS



## SPLIT LEVEL ROOFS

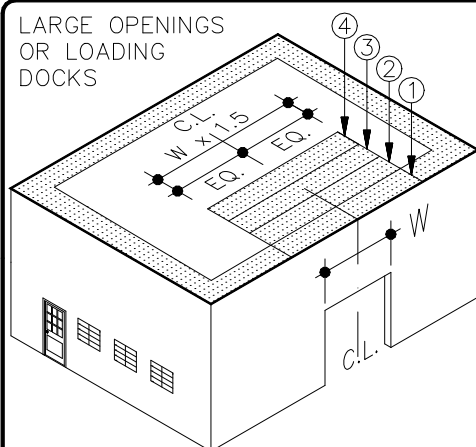


## CANOPY ROOF

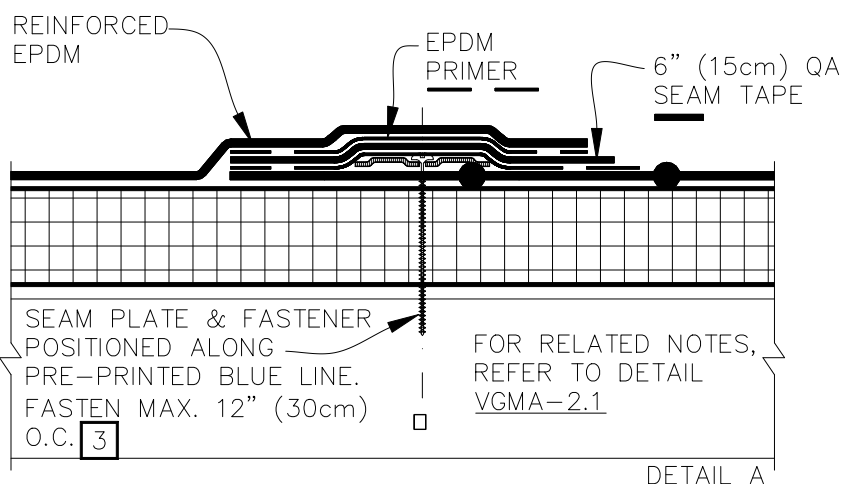
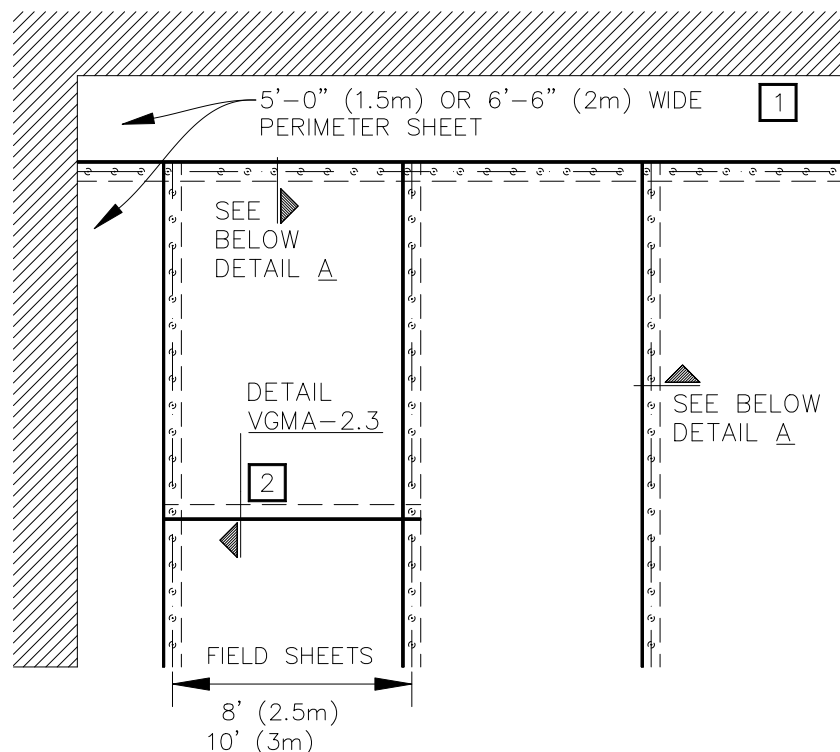


INSTALL PERIMETER SHEETS OVER THE ENTIRE OVERHANG (PROJECTION ROOF) AREA, EXTENDING ONTO THE MAIN ROOF DECK WHEN AT THE SAME LEVEL AS SHOWN.

## LARGE OPENINGS OR LOADING DOCKS



4 PERIMETER SHEETS CENTERED OVER LARGE OPENINGS



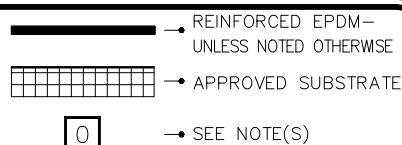
## NOTES:

1. REFER TO VERSICO SPECIFICATIONS FOR REQUIRED NUMBER OF PERIMETER SHEETS, SHEET WIDTH AND MEMBRANE FASTENING DENSITY.
2. END LAPS DO NOT REQUIRE MECHANICAL FASTENING AND SHALL BE SPLICED USING EITHER 3" (7.5cm) OR 6" (15cm) WIDE QA SEAM TAPE. PER DETAIL VGMA-2.3.
3. HPX FASTENERS AND POLYMER SEAM PLATES ARE REQUIRED OVER STEEL DECKS.

MAXIMUM WARRANTY: 30 YEARS



MECHANICALLY ATTACHED  
EPDM SECUREMENT –  
OPTION 1



MECHANICALLY  
ATTACHED EPDM  
VGMA-2.0A