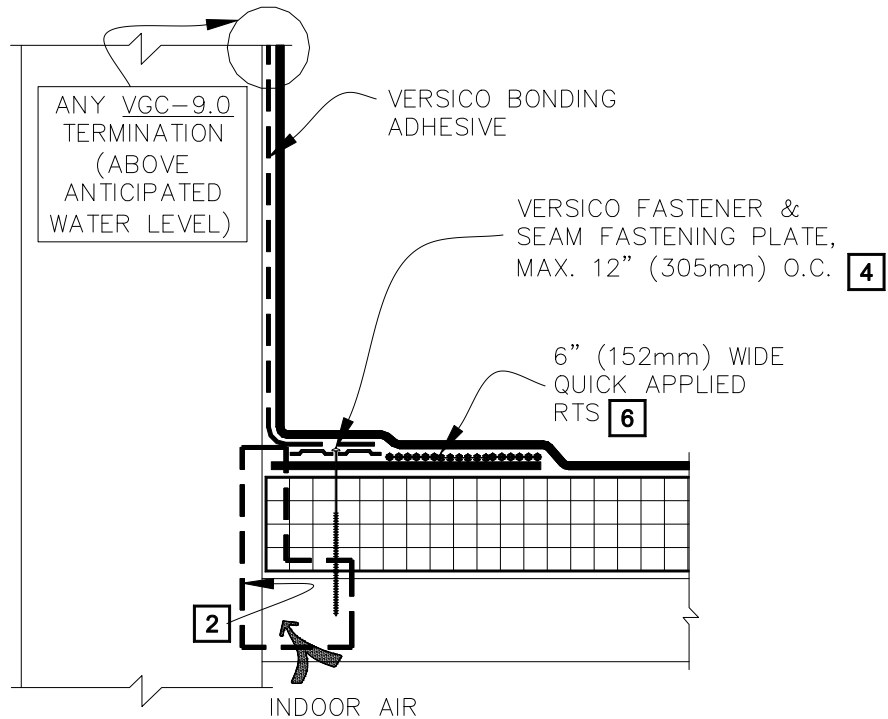
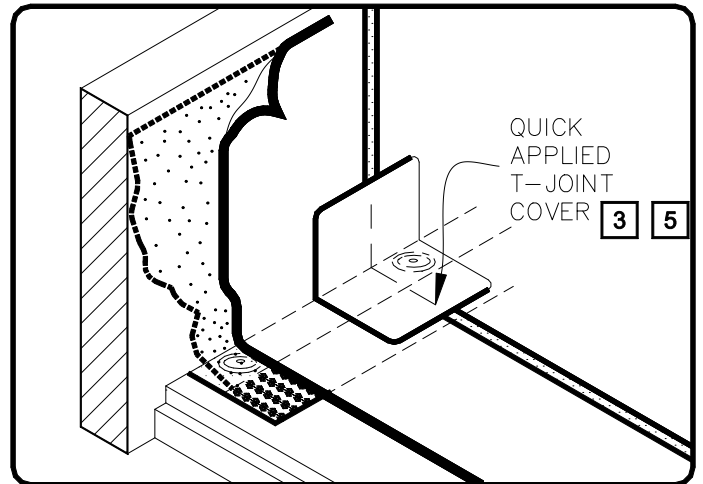


CAUTION WHEN A WARRANTY WIND SPEED GREATER THAN 90MPH IS SPECIFIED, VERSICO FASTENERS AND SEAM FASTENING PLATES SHALL NOT EXCEED 6" (152mm) ON CENTER FOR ADHERED MEMBRANE ASSEMBLIES.



NOTES:

1. FOR CORNERS AND RTS APPLICATION REFER TO DETAILS VGC-15.1 OR VGC-15.2.
2. REFER TO SPECIAL CONDITION SPEC. SUPPLEMENTS G-01-11 OR G-07-11:
 - 2.1. TO BLOCK INDOOR AIR INFILTRATION AND HUMIDITY AT THE JUNCTION (G-01-11).
 - 2.2. WHERE ROOF SYSTEM IS DESIGNED WITH A VAPOR RETARDER (G-07-11).
3. 6" (152mm) WIDE QUICK APPLIED UNCURED EPDM FLASHING, IN CONJUNCTION WITH EPDM PRIMER, MAY ALSO BE CENTERED OVER FIELD SPLICE AT ANGLE CHANGE.
4. ON MECHANICALLY-ATTACHED ROOFING SYSTEMS, HPV FASTENERS AND POLYMER SEAM PLATES ARE REQUIRED OVER STEEL DECKS.
5. PROJECTS WITH 25 AND 30-YEAR WARRANTIES OR WHEN USING 90-MIL MEMBRANE, ALL VERTICAL SPLICES AT THE BASE OF A WALL AND SPLICE INTERSECTIONS MUST BE OVERLAID WITH TWO LAYERS OF QUICK APPLIED UNCURED EPDM FLASHING. THE BOTTOM LAYER SHALL BE 6" (152mm) WIDE COVERED WITH A 12" (305mm) WIDE QUICK APPLIED UNCURED EPDM FLASHING PIECE. BOTH LAYERS SHALL BE CENTERED AND SEALED WITH CONTINUOUS LAP SEALANT. REFER TO DETAIL VGC-2.3.
6. EPDM PRIMER MUST BE APPLIED TO BACK SIDE OF DECK MEMBRANE PRIOR TO COMPLETING SPLICE TO QUICK APPLIED RTS.



PARAPET/CURB WITH QUICK-APPLIED RTS (HORIZONTAL)

THERMOSET ROOFING SYSTEM

VGC-12.2