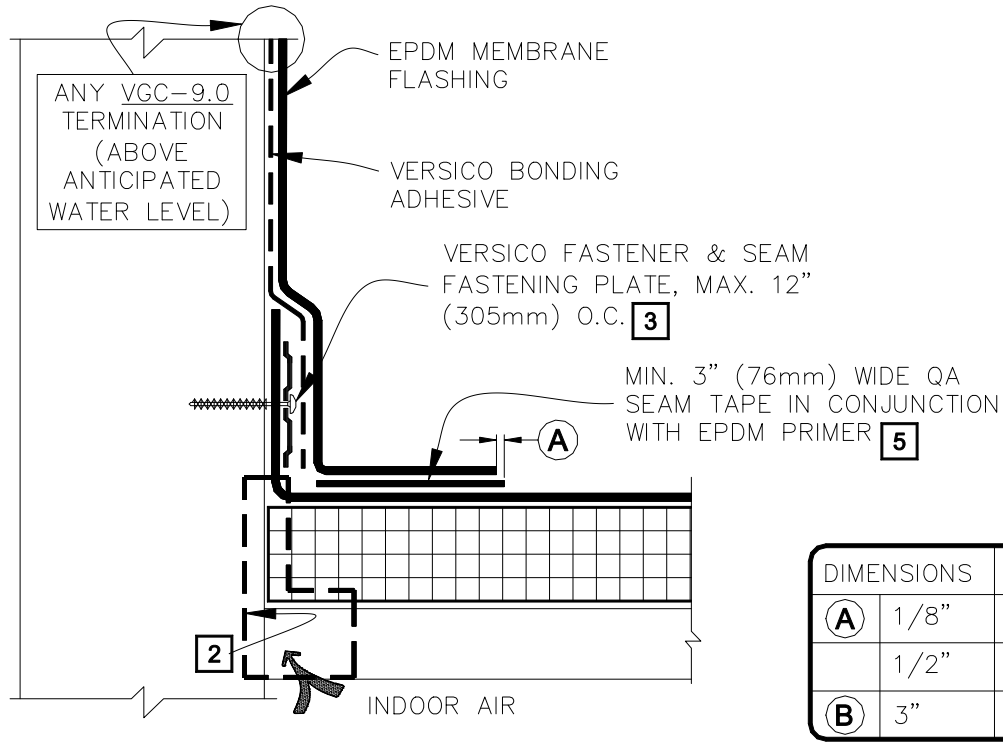
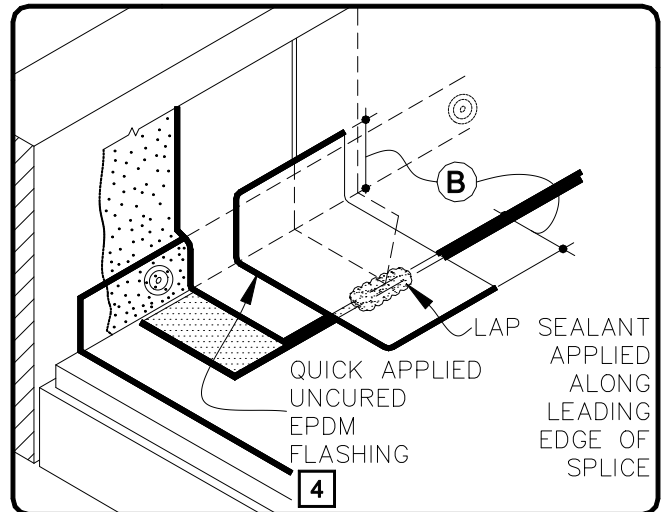


**CAUTION** WHEN A WARRANTY WIND SPEED GREATER THAN 90MPH IS SPECIFIED, VERSICO FASTENERS AND SEAM FASTENING PLATES SHALL NOT EXCEED 6" (152mm) ON CENTER FOR ADHERED MEMBRANE ASSEMBLIES.



**NOTES:**

1. PRIOR TO THE INSTALLATION OF QA SEAM TAPE AND QUICK APPLIED FLASHING APPLY EPDM PRIMER TO SPLICE AREAS.
2. REFER TO SPECIAL CONDITION SPEC. SUPPLEMENTS G-01-11 OR G-07-11:
  - 2.1. TO BLOCK INDOOR AIR INFILTRATION AND HUMIDITY AT THE JUNCTION (G-01-11).
  - 2.2. WHERE ROOF SYSTEM IS DESIGNED WITH A VAPOR RETARDER (G-07-11).
3. SEAM FASTENING PLATE/FASTENER MAY BE INSTALLED INTO THE STRUCTURAL DECK. HPV FASTENERS AND POLYMER SEAM PLATES ARE REQUIRED FOR MECHANICALLY-ATTACHED ROOFING SYSTEMS OVER STEEL DECKS.



4. PROJECTS WITH 25 AND 30-YEAR WARRANTIES OR WHEN USING 90-MIL MEMBRANE, ALL VERTICAL SPLICES AT THE BASE OF A WALL AND SPLICE INTERSECTIONS MUST BE OVERLAID WITH TWO LAYERS OF QUICK APPLIED UNCURED EPDM FLASHING. THE BOTTOM LAYER SHALL BE 6" (152mm) WIDE COVERED WITH A 12" (305mm) WIDE QUICK APPLIED UNCURED EPDM FLASHING PIECE. BOTH LAYERS SHALL BE CENTERED AND SEALED WITH CONTINUOUS LAP SEALANT. REFER TO DETAIL VGC-2.3.
5. MEMBRANE SPLICES SHALL INCORPORATE 6" (152mm) WIDE FIELD APPLIED QA SEAM TAPE FOR PROJECTS WITH 20, 25 and 30-YEAR WARRANTIES.
6. LAP SEALANT IS REQUIRED ON CUT EDGES OF REINFORCED MEMBRANE.



**PARAPET/CURB WITH SEPARATE MEMBRANE FLASHING**

THERMOSET ROOFING SYSTEM

**VGC-12.3**