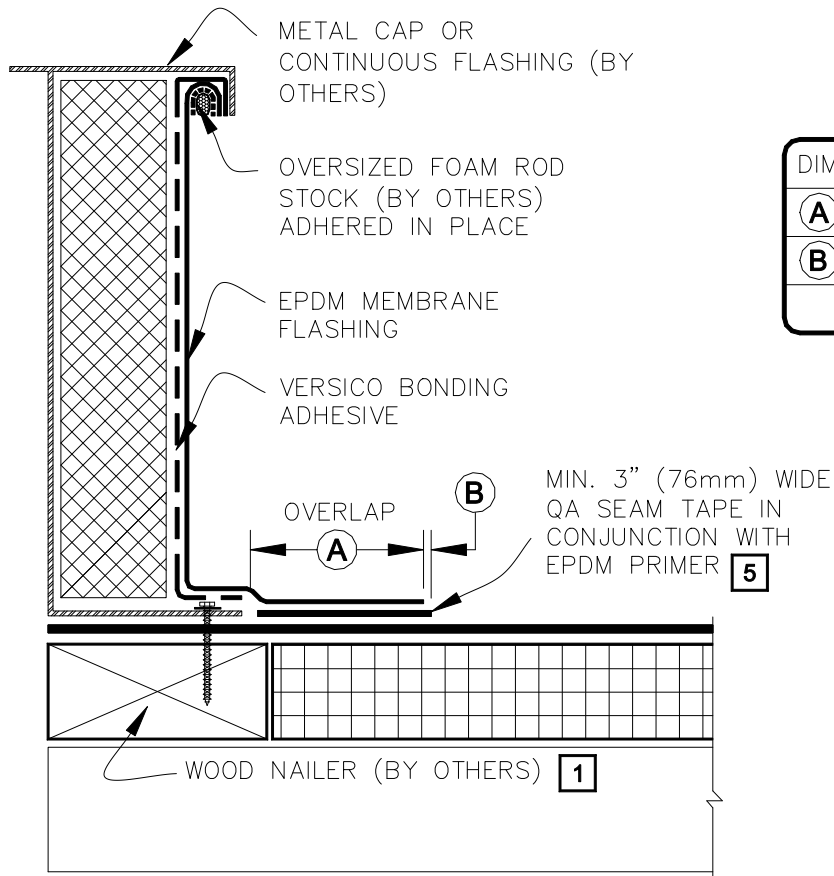


CAUTION

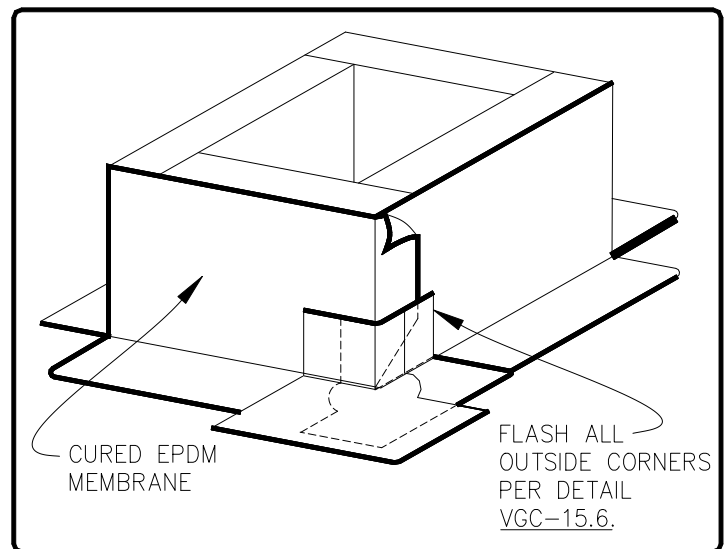
FOR PROJECTS WITH 25 & 30-YEAR WARRANTIES OR WHEN USING 90-MIL MEMBRANE, REFER TO DETAIL VGC-15.8 FOR REQUIRED CORNER ENHANCEMENTS.






DIMENSIONS		mm	
A	3"	76	APPROX.
B	1/8"	3	MIN.
	1/2"	13	MAX.

NOTES:

- WOOD NAILER MUST EXTEND PAST TOTAL WIDTH OF CURB FLANGE.
- LENGTH OF ROD STOCK IS LIMITED TO 4' (1219mm). USE INDIVIDUAL SECTIONS OF ROD STOCK FOR LONGER DIMENSIONS.
- 7"X9" (178mm X 229mm) QUICK APPLIED CORNERS CANNOT BE USED FOR THIS DETAIL WHEN THE FLANGE IS LOCATED ON TOP OF THE MEMBRANE DUE TO INCOMPLETE COVERAGE OF THE METAL FLANGE AT CORNERS. REFER TO DETAIL VGC-15.6.
- DETAIL IS NOT ACCEPTABLE FOR VIBRATING ROOF TOP UNITS.
- MEMBRANE SPLICES SHALL INCORPORATE 6" (152mm) WIDE FIELD APPLIED QA SEAM TAPE FOR PROJECTS WITH 20, 25 and 30-YEAR WARRANTIES.



SELF-FLASHING CURB

 → EPDM MEMBRANE
 → APPROVED SUBSTRATE
 → SEE NOTE(S)

THERMOSET ROOFING SYSTEM

VGC-5.4