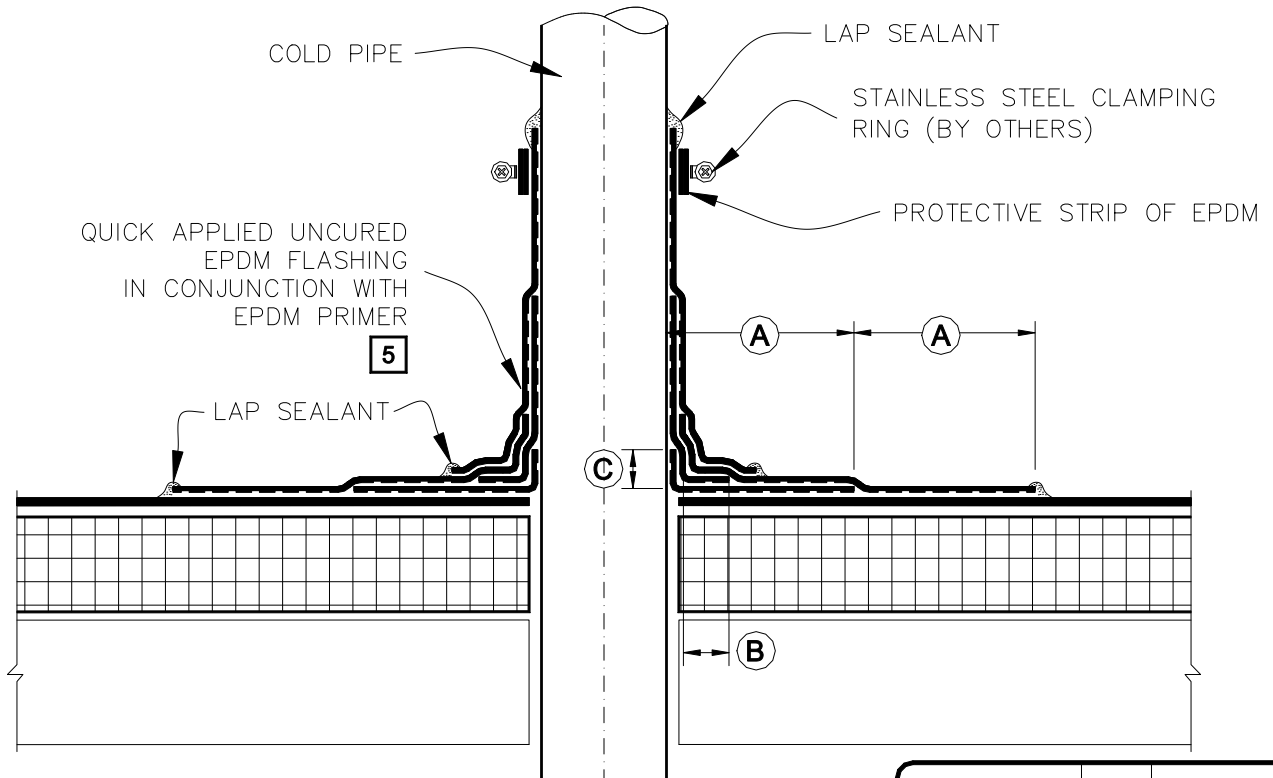


**CAUTION** WHEN A PRE-MOLDED PIPE SEAL IS NOT FEASIBLE, PROJECTS WITH 25 & 30-YEAR WARRANTIES REQUIRE ALL ROUND PIPE PENETRATIONS & STRUCTURAL STEEL TUBING TO BE DOUBLE WRAPPED WITH TWO LAYERS OF QUICK APPLIED UNCURED EPDM FLASHING, TERMINATED WITH A STAINLESS STEEL CLAMPING RING & SEALED WITH CONTINUOUS LAP SEALANT (AS SHOWN).



DIMENSIONS		mm	
<b>A</b>	3"	76	MIN.
<b>B</b>	1"	25	MIN.
<b>C</b>	1/2"	13	MIN.

**NOTES:**

1. REMOVE ALL LEAD AND OTHER FLASHING BEFORE INSTALLING FIELD-FABRICATED FLASHING.
2. TEMPERATURE OF PIPE PENETRATION MUST NOT EXCEED 180°F (82°C).
3. PIPE FLASHING MAY BE USED WITH SQUARE OR RECTANGULAR STRUCTURAL TUBING WITH ROUNDED CORNERS.
4. FOR STRUCTURAL STEEL TUBING GREATER THAN 12" (305mm) ACROSS, USE DETAIL(S) VGC-5.
5. EPDM PRIMER MUST BE APPLIED TO THE MATING SURFACES PRIOR TO APPLYING QUICK APPLIED UNCURED EPDM FLASHING.
6. IN COLDER TEMPERATURES, A HEAT GUN MUST BE USED WHEN FORMING QUICK APPLIED UNCURED EPDM FLASHING.
7. ON MECHANICALLY ATTACHED ROOFING SYSTEMS, ADDITIONAL MEMBRANE SECUREMENT IS REQUIRED. REFER TO DETAIL VGMA-8.2.
8. MEMBRANE SECUREMENT IS REQUIRED AROUND ALL ROUND PIPE PENETRATIONS GREATER THAN 18" (457mm) IN DIAMETER.



**FIELD FABRICATED PIPE SEAL / STRUCTURAL STEEL TUBE FLASHING**

THERMOSET ROOFING SYSTEM

**VGC-8.2**