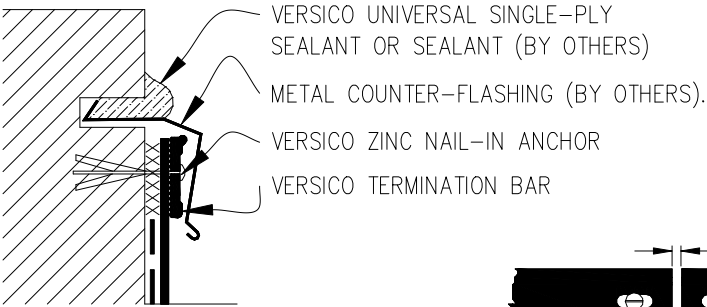
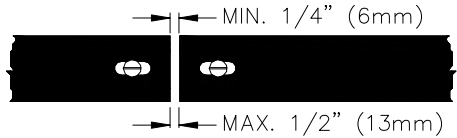


9.1 MECHANICAL TERMINATION WITH COUNTER FLASHING

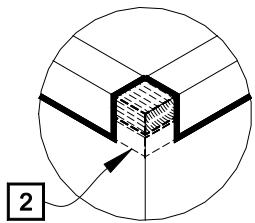
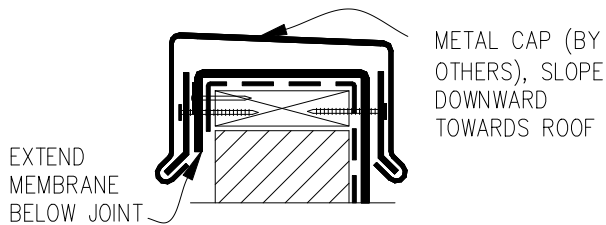


NOTES:

1. APPLY ON HARD SMOOTH SURFACE ONLY; NOT FOR USE ON EXPOSED WOOD.
2. DO NOT WRAP TERMINATION BAR AROUND CORNERS.



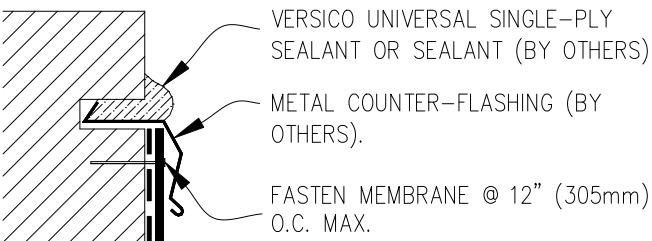
9.2 SHEET METAL COPING (BY OTHERS)



NOTES:

1. FOR VERSICO VERSITRIM COPING, REFER TO INSTALLATION INSTRUCTIONS PUBLISHED SEPARATELY.
2. MEMBRANE MUST BE EXTENDED TO CORNERS TO PROVIDE COMPLETE COVERAGE OF THE TOP WALL SURFACE.

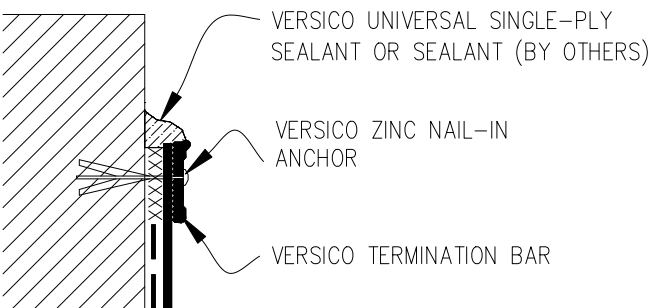
9.3 COUNTER FLASHING TERMINATION



NOTES:

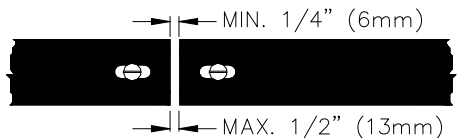
1. WHEN MECHANICAL FASTENERS ARE USED TO PENETRATE THE METAL COUNTER-FLASHING, USE EPDM WASHERS, APPLY WATER CUT-OFF MASTIC UNDER THE COUNTER-FLASHING OR CAULK THE FASTENER HEADS.
2. DETAIL NOT FOR USE ON WARRANTY PROJECTS EXCEEDING 10-YEARS.

9.4 MECHANICAL TERMINATION



NOTES:

1. APPLY ON HARD SMOOTH SURFACE ONLY; NOT FOR USE ON EXPOSED WOOD.
2. DO NOT WRAP COMPRESSION TERMINATION BAR AROUND CORNERS.
3. DETAIL NOT FOR USE ON WARRANTY PROJECTS EXCEEDING 20-YEARS.



— — — VERSICO BONDING ADHESIVE

xxxxxxx WATER CUT-OFF MASTIC— MUST BE HELD UNDER CONSTANT COMPRESSION.



MEMBRANE TERMINATIONS, PAGE 1 OF 2

→ EPDM MEMBRANE
 → APPROVED SUBSTRATE
 → SEE NOTE(S)

THERMOSET ROOFING SYSTEM
VGC-9.0A