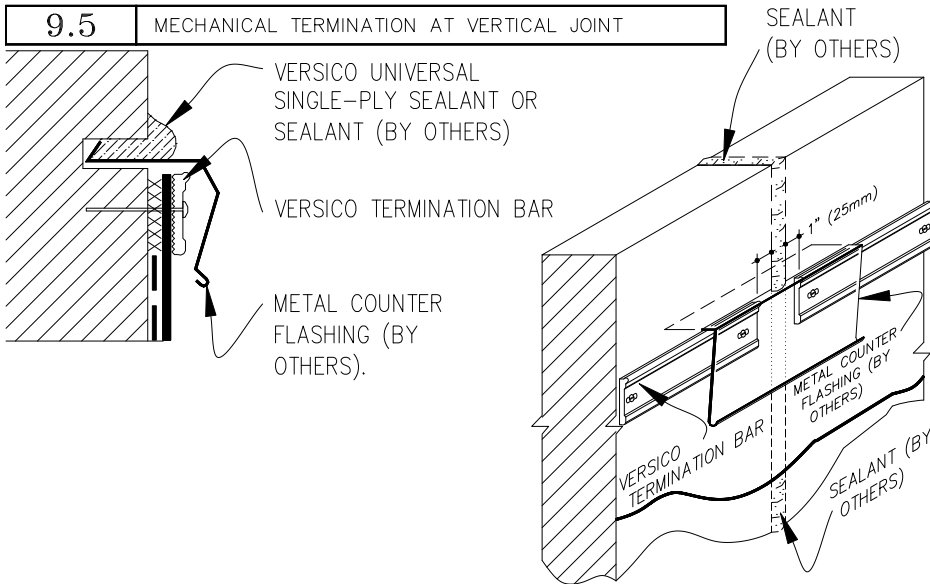


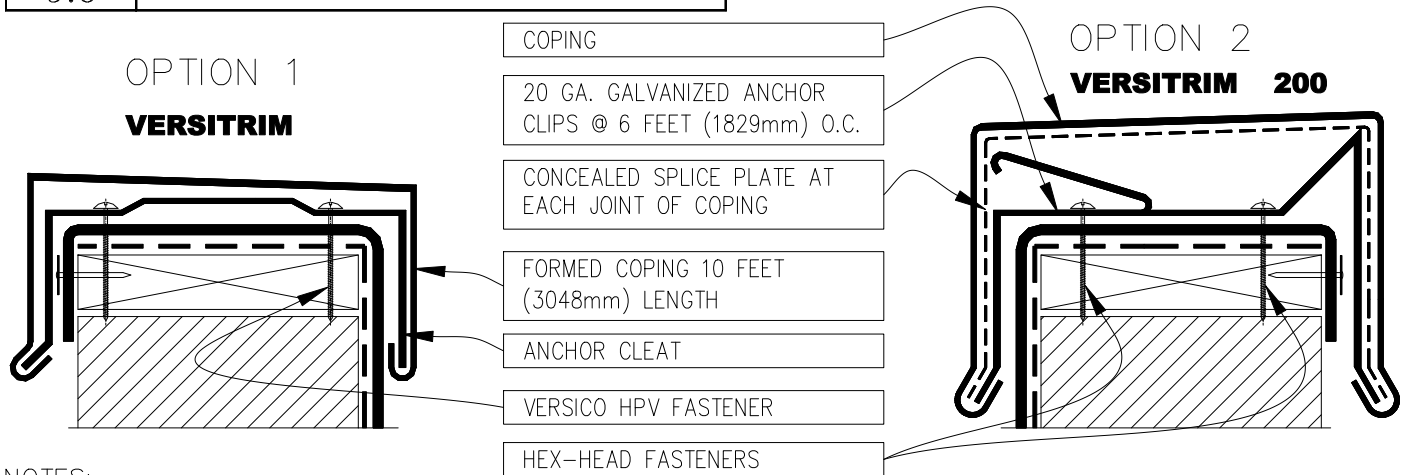
9.5 MECHANICAL TERMINATION AT VERTICAL JOINT



NOTES:

1. APPLY ON HARD SMOOTH SURFACE ONLY.
2. DO NOT WRAP COMPRESSION TERMINATION BAR AROUND CORNERS.
3. VERTICAL JOINTS IN THE PRE-CAST PANEL AS WELL AS ALL GAPS AT THE JUNCTION OF THE TILT-UP PANEL AND ROOF DECK MUST BE FULLY SEALED TO PREVENT AIR INFILTRATION.
4. CONTINUOUS COUNTER FLASHING REQUIRED FOR WARRANTY PROJECTS EXCEEDING 20-YEARS.

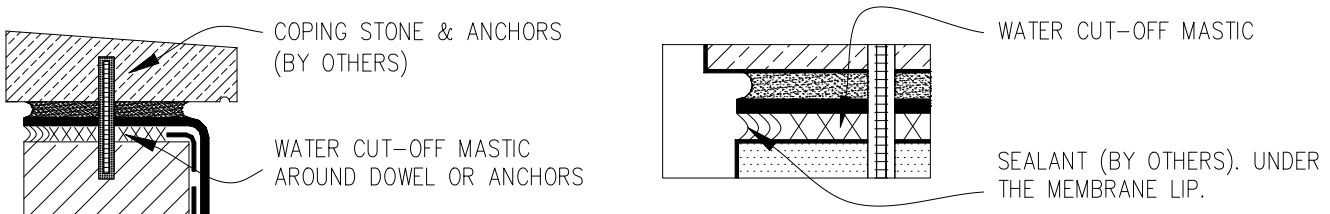
9.6 VERSITRIM COPING



NOTES:

1. MEMBRANE MUST BE EXTENDED AT CORNERS TO PROVIDE COMPLETE COVERAGE OF THE TOP WALL SURFACE. REFER TO DETAIL VGC-9.2.
2. REFER TO VERSITRIM COPING INSTALLATION INSTRUCTION MANUAL FOR STEP-BY-STEP INSTRUCTION PROCEDURES.

9.7 COPING STONE TERMINATION






— — — — — VERSICO BONDING ADHESIVE

xxxxxxx WATER CUT-OFF MASTIC— MUST BE HELD UNDER CONSTANT COMPRESSION.



MEMBRANE TERMINATIONS, PAGE 2 OF 2

 → EPDM MEMBRANE
 → APPROVED SUBSTRATE
 → SEE NOTE(S)

THERMOSET ROOFING SYSTEM

VGC-9.0B