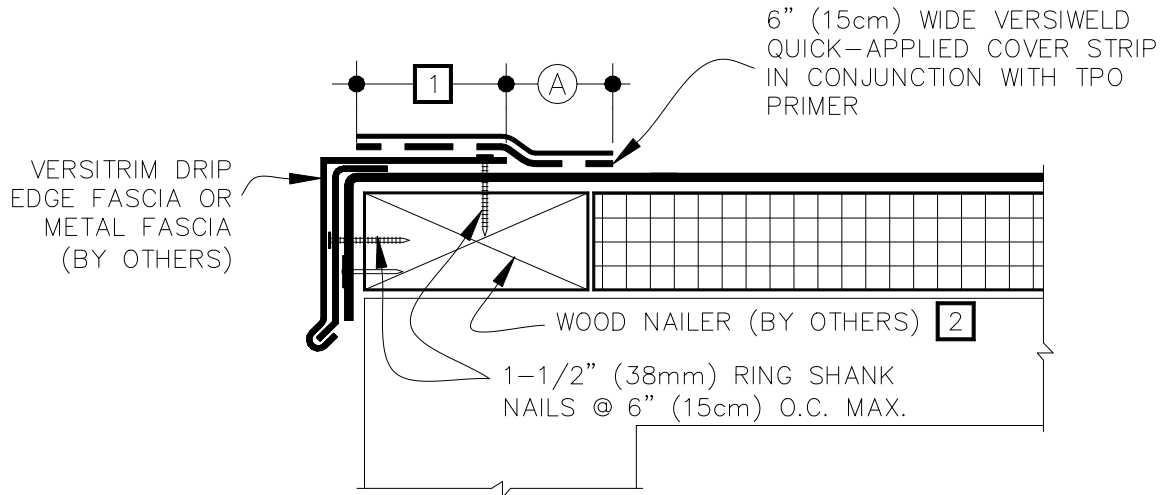


CAUTION

DETAIL NOT FOR USE ON 25 OR 30-YEAR WARRANTY PROJECTS. ACCEPTABLE EDGING SHALL CONFORM WITH THERMOPLASTIC COMMON DETAILS TPC-1.2, 1.3, 1.4, 1.5 OR 1.6.

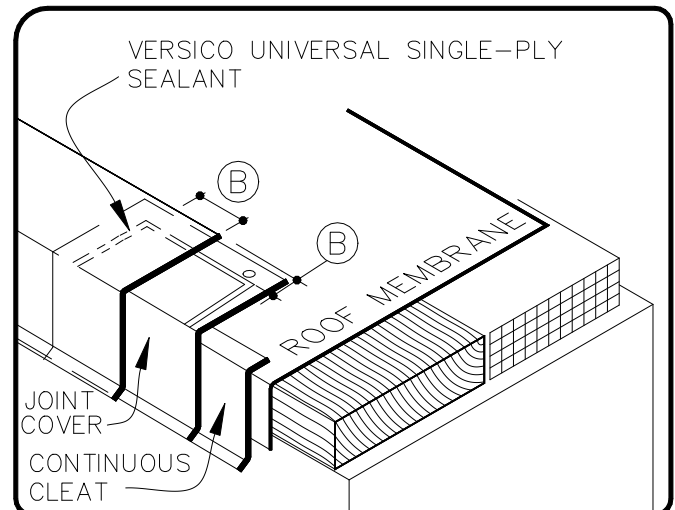


NOTES:

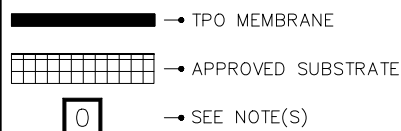
1. METAL FASCIA DECK FLANGE MUST BE TOTALLY COVERED BY TPO QUICK-APPLIED COVER STRIP WITH MINIMUM 2" (5cm) COVERAGE PAST NAIL HEADS.
2. WOOD NAILER MUST EXTEND PAST TOTAL WIDTH OF METAL FASCIA DECK FLANGE.
3. TO REMOVE FINISHING OILS, SCRUB METAL FLANGE WITH WEATHERED MEMBRANE CLEANER; ALLOW TO DRY PRIOR TO APPLYING PRIMER.
4. APPLY TPO PRIMER TO METAL FLANGE AND MEMBRANE SURFACE PRIOR TO INSTALLING TPO QUICK-APPLIED COVER STRIP.
5. WHEN METAL FASCIA BY OTHERS IS USED, FASTENER TYPE AND FASTENING FREQUENCY SHALL BE RECOMMENDED BY METAL EDGE MANUFACTURER.
6. TO ENSURE TPO QUICK-APPLIED COVER STRIP CONFORMS TO STEP-OFFS, HEAT COVER STRIP AT SPLICE INTERSECTIONS PRIOR TO ROLLING.
7. THIS DETAIL IS NOT RECOMMENDED FOR ROOFS THAT ARE LIKELY TO EXPERIENCE SIGNIFICANT SNOW AND ICE UP-SLOPE FROM THE GUTTER/EDGE. REFER TO DETAILS TPC-1.2 OR TPC-1.3.

TPO ONLY
(NOT FOR PVC)

DIMENSIONS	cm	
(A) 2"	5	MIN.
(B) 1/2"	1.5	TO
1"	2.5	



VERSITRIM DRIP EDGE FASCIA



THERMOPLASTIC ROOFING SYSTEM

TPC-1.1