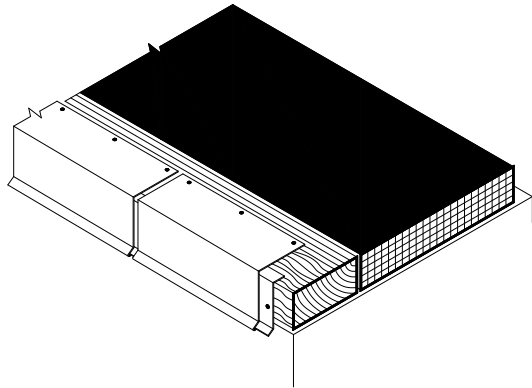


NOTES:

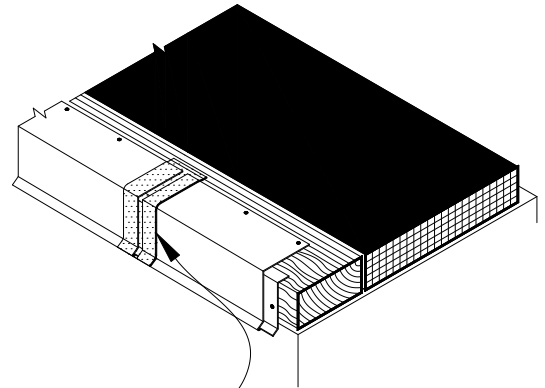
1. WOOD NAILER MUST EXTEND PAST TOTAL WIDTH OF METAL FASCIA DECK FLANGE.
2. APPROXIMATELY 1/8" (0.5cm) DIAMETER BEAD OF CUT-EDGE SEALANT IS REQUIRED ON CUT EDGES OF REINFORCED TPO MEMBRANE.

1



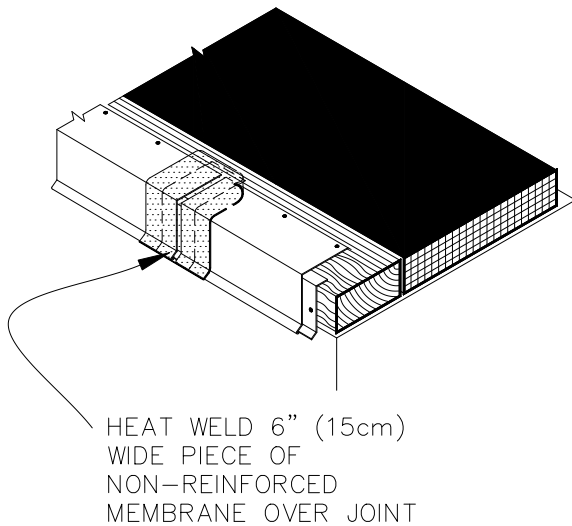
INSTALL CONTINUOUS CLEAT AND COATED METAL WITH 1/8"–1/4" (0.5–1cm) JOINTS BETWEEN ADJOINING SECTIONS.

2



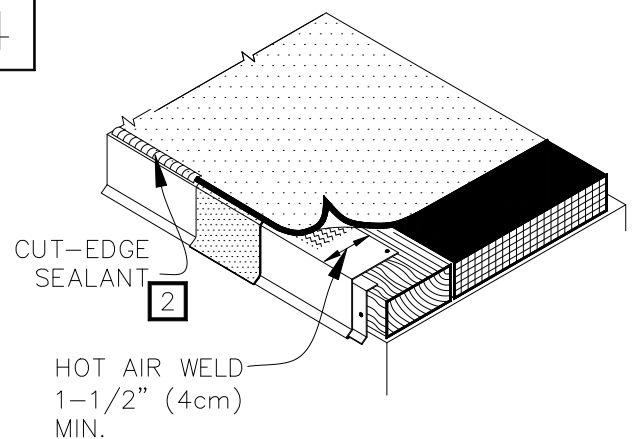
HEAT WELD 3" (7.5cm) WIDE PIECE OF NON-REINFORCED THERMOPLASTIC MEMBRANE OVER JOINT

3



HEAT WELD 6" (15cm) WIDE PIECE OF NON-REINFORCED MEMBRANE OVER JOINT

4



POSITION FIELD MEMBRANE AND HEAT WELD COATED METAL A MINIMUM OF 1-1/2" (4cm) AS SHOWN.