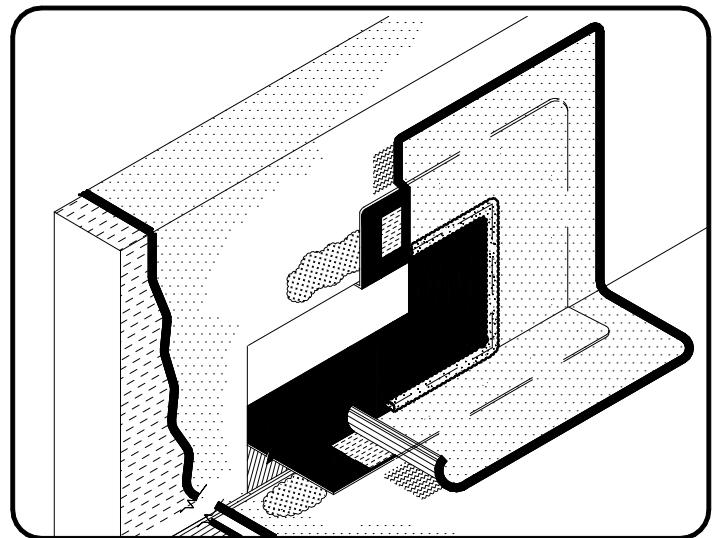


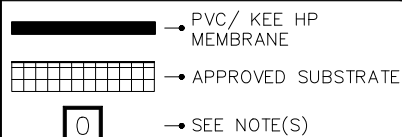
## NOTES:

1. WOOD NAILERS ARE INSTALLED ONLY AT SCUPPERS TO SECURE METAL SLEEVE AND MUST EXTEND PAST THE WIDTH OF METAL SLEEVE FLANGE.
2. METAL SCUPPER BOX MUST HAVE CONTINUOUS FLANGES WITH ROUNDED CORNERS, SOLDER ALL SCUPPER SEAMS WATER-TIGHT.
3. WATER CUT-OFF MASTIC UNDER SCUPPER FLANGE MUST BE UNDER CONSTANT COMPRESSION.
4. SCUPPER FLANGES MUST BE TOTALLY COVERED BY NON-REINFORCED PVC/KEE HP FLASHING WITH MINIMUM 2" (5cm) COVERAGE PAST NAIL HEAD.
5. UNIVERSAL SINGLE-PLY SEALANT IS REQUIRED AT FLASHING EDGES ON SCUPPER EDGE.

PVC/ KEE HP  
ONLY  
(NOT FOR TPO)



SCUPPER AT  
DECK-PVC/KEE HP



THERMOPLASTIC  
ROOFING SYSTEM

TPC-18.3