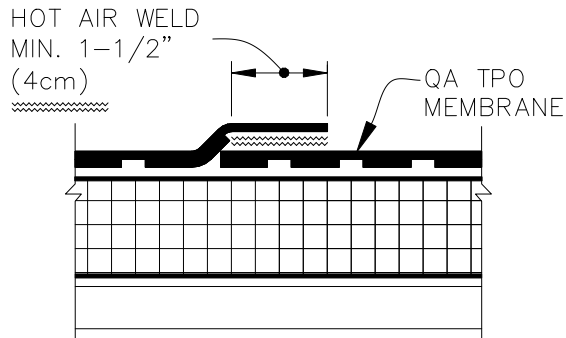


MEMBRANE SPLICE



END LAP SPLICE

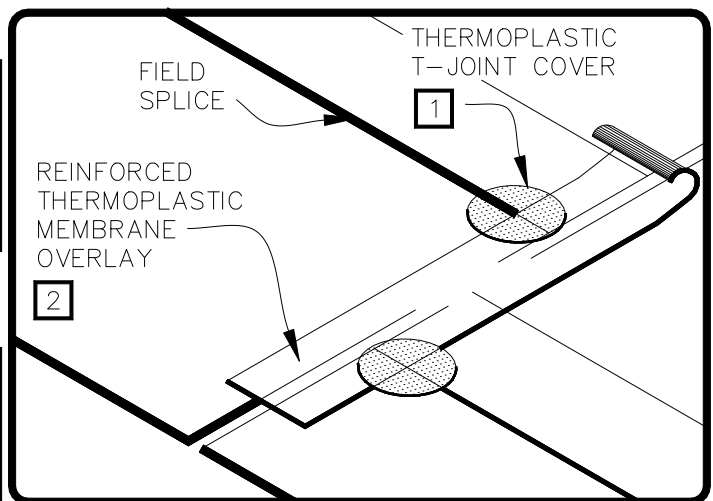
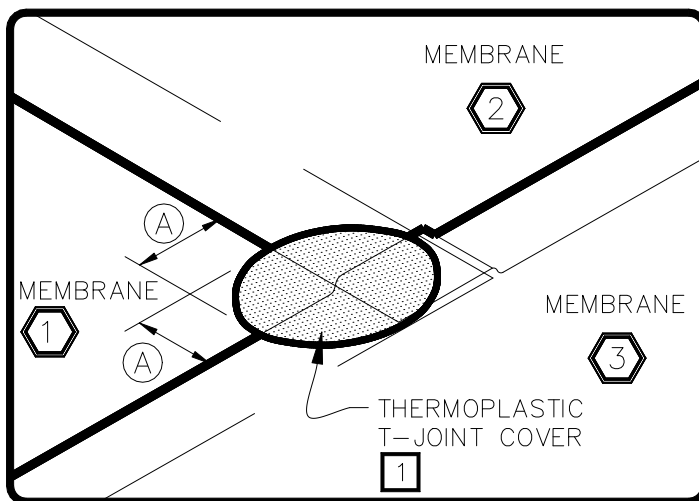
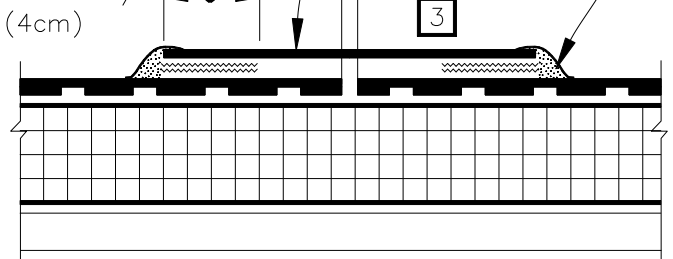
MINIMUM 6" (15cm)
WIDE REINFORCED
THERMOPLASTIC
MEMBRANE OVERLAY

HOT AIR WELD
MIN. 1-1/2"
(4cm)

VERSIWELD QA
TPO MEMBRANE
ONLY
(NOT FOR PVC)

1" (2.5cm) MAX.

CUT EDGE
SEALANT FOR
TPO ONLY



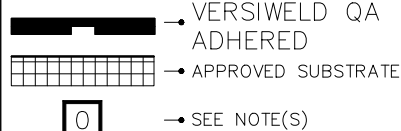
DIMENSION	cm
(A) 2-1/4"	6

NOTES:

1. WHEN USING 60 OR 80 MIL QA TPO MEMBRANE, APPLY A 4-1/2" (11cm) DIAMETER THERMOPLASTIC "T-JOINT" COVER AT ALL FIELD SPLICE INTERSECTIONS.
2. WHEN USING 60 OR 80 MIL THERMOPLASTIC REINFORCED MEMBRANE OVERLAY, INTERSECTIONS BETWEEN SPLICES MUST BE OVERLAID WITH A 4-1/2" (11cm) DIAMETER THERMOPLASTIC "T-JOINT" COVER.
3. APPROXIMATELY 1/8" (0.5cm) DIAMETER BEAD OF CUT-EDGE SEALANT IS REQUIRED ON CUT EDGES OF REINFORCED TPO MEMBRANE.
4. WHEN USING 60-MIL TPO, MAXIMUM WARRANTY IS 20 YEARS



THERMOPLASTIC
MEMBRANE SPLICES



THERMOPLASTIC
ROOFING SYSTEM

TPC-2.1