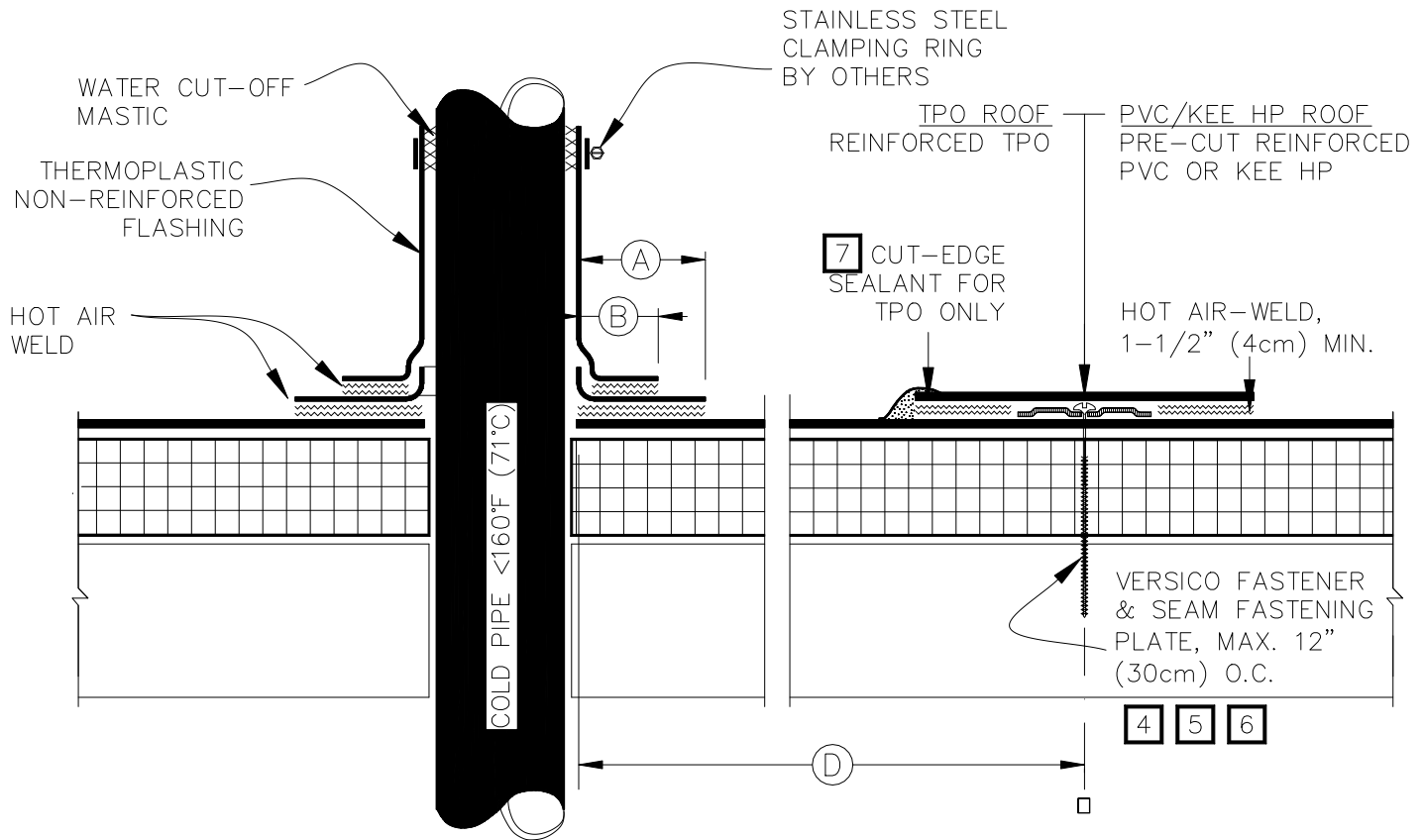


**CAUTION** DETAIL NOT FOR USE ON 25 OR 30-YEAR WARRANTY PROJECTS, PRE-FABRICATED/PRE-MOLDED ACCESSORIES MUST BE UTILIZED. ACCEPTABLE PIPE FLASHINGS SHALL CONFORM WITH THERMOPLASTIC COMMON DETAILS TPC-8.1, TPC-8.3 OR TPC-8.4.



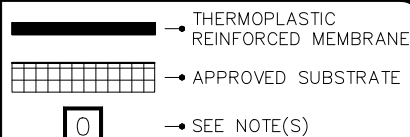
## NOTES:

1. REMOVE ALL EXISTING LEAD AND FLASHING MATERIAL BEFORE INSTALLING FIELD FABRICATED PIPE FLASHING.
2. TEMPERATURE OF THE PIPE PENETRATION MUST NOT EXCEED 140°F (60°C) WHEN USING PVC AND 160°F (71°C) WHEN USING TPO FLASHING.
3. THERMOPLASTIC NON-REINFORCED FLASHING WRAPPED AROUND PIPE SHALL HAVE MINIMUM 1-1/2" (4cm) VERTICAL HOT AIR WELD.
4. INSTALL A MINIMUM OF 4 SEAM FASTENING PLATES FOR PIPES WITH A DIAMETER UP TO 6" (15cm). ADDITIONAL SEAM FASTENING PLATES WILL BE REQUIRED FOR PIPES GREATER THAN 6" (15cm) IN DIAMETER AND SHALL BE SPACED 12" (30cm) ON CENTER MAXIMUM.
5. FASTENERS/PLATES ARE NOT REQUIRED ON ADHERED SYSTEMS UNLESS PIPE DIAMETER EXCEEDS 18" (50cm).
6. ON MECHANICALLY ATTACHED SYSTEMS, HPVX FASTENERS AND PLATES OR HPV-XL FASTENERS AND PLATES ARE REQUIRED OVER STEEL AND WOOD DECKS. ON CONCRETE DECKS, CD-10 OR MP 14-10 FASTENERS ARE USED WITH HPVX PLATES.
7. APPROXIMATELY 1/8" (0.5cm) DIAMETER BEAD OF CUT-EDGE SEALANT IS REQUIRED ON CUT EDGES OF REINFORCED TPO MEMBRANE.

DIMENSIONS	cm	
(A) 1-1/2"	4	TO
2"	5	
(B) 1"	2.5	MIN.
(C) 1/2"	1.5	MIN.
(D) 12"	30	APPROX.



FIELD FABRICATED PIPE FLASHING



THERMOPLASTIC ROOFING SYSTEM

TPC-8.2