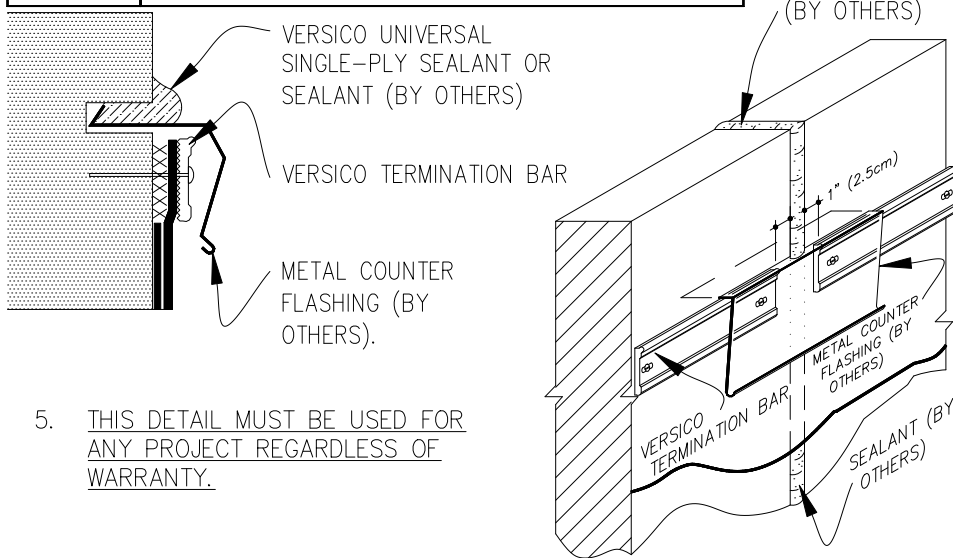


## 9.5 MECHANICAL TERMINATION AT VERTICAL JOINT

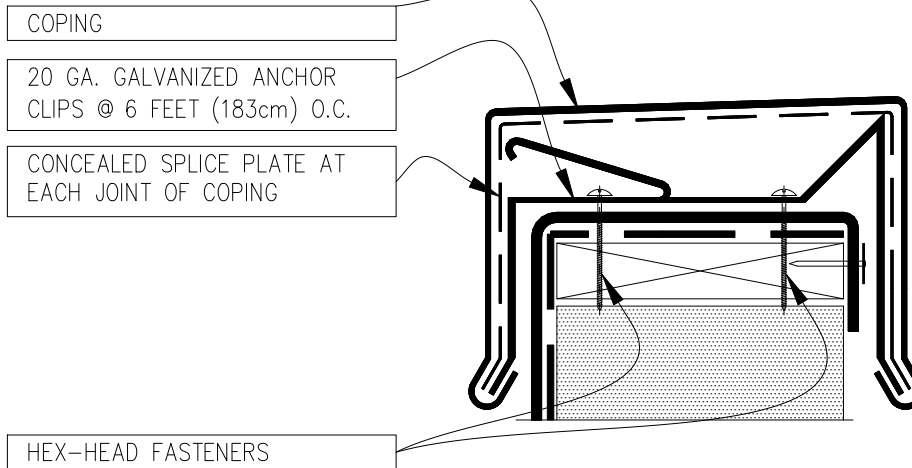


5. THIS DETAIL MUST BE USED FOR ANY PROJECT REGARDLESS OF WARRANTY.

## NOTES:

1. APPLY ON HARD SMOOTH SURFACE ONLY.
2. DO NOT WRAP COMPRESSION TERMINATION BAR AROUND CORNERS.
3. VERTICAL JOINTS IN THE PRE-CAST PANEL AS WELL AS ALL GAPS AT THE JUNCTION OF THE TILT-UP PANEL AND ROOF DECK MUST BE FULLY SEALED TO PREVENT AIR INFILTRATION.
4. CONTINUOUS COUNTER FLASHING REQUIRED FOR WARRANTY PROJECTS EXCEEDING 20-YEARS.

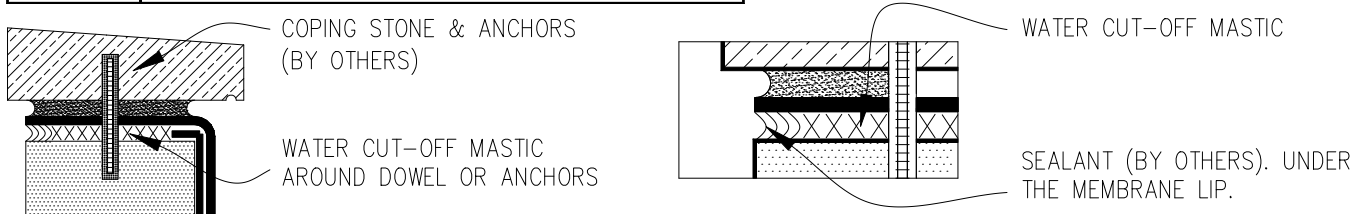
## 9.6 VERSITRIM 200 &amp; 300 COPING



## NOTE:

1. MEMBRANE SHOULD BE EXTENDED AT CORNERS TO PROVIDE COMPLETE COVERAGE OF THE TOP WALL SURFACE. REFER TO DETAIL TPC-9.0.
2. REFER TO VERSITRIM COPING INSTALLATION INSTRUCTION MANUAL FOR STEP-BY-STEP INSTRUCTION PROCEDURES.

## 9.7 COPING STONE TERMINATION



— — — — — APPLICABLE BONDING ADHESIVE.

xxxxxxx

WATER CUT-OFF MASTIC – MUST BE HELD UNDER CONSTANT COMPRESSION.