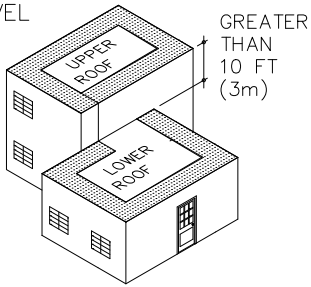


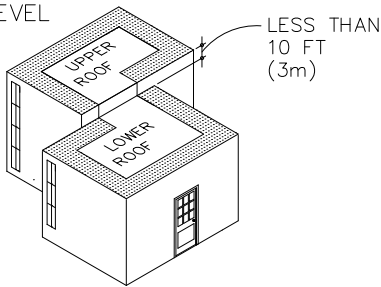
GUIDELINES FOR ROOF PERIMETER ZONES FOR MECHANICALLY ATTACHED ROOF SYSTEM

SPLIT LEVEL ROOFS



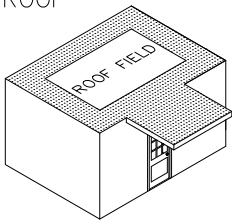
GREATER THAN
10 FT
(3m)

SPLIT LEVEL ROOFS



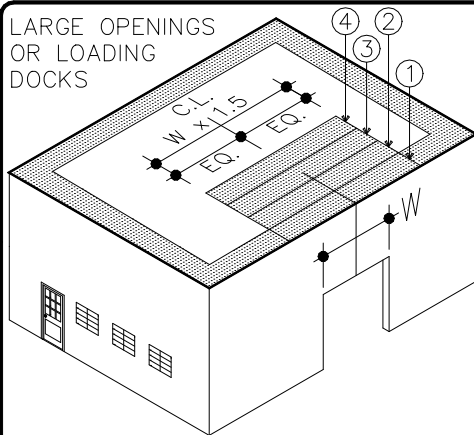
LESS THAN
10 FT
(3m)

CANOPY ROOF



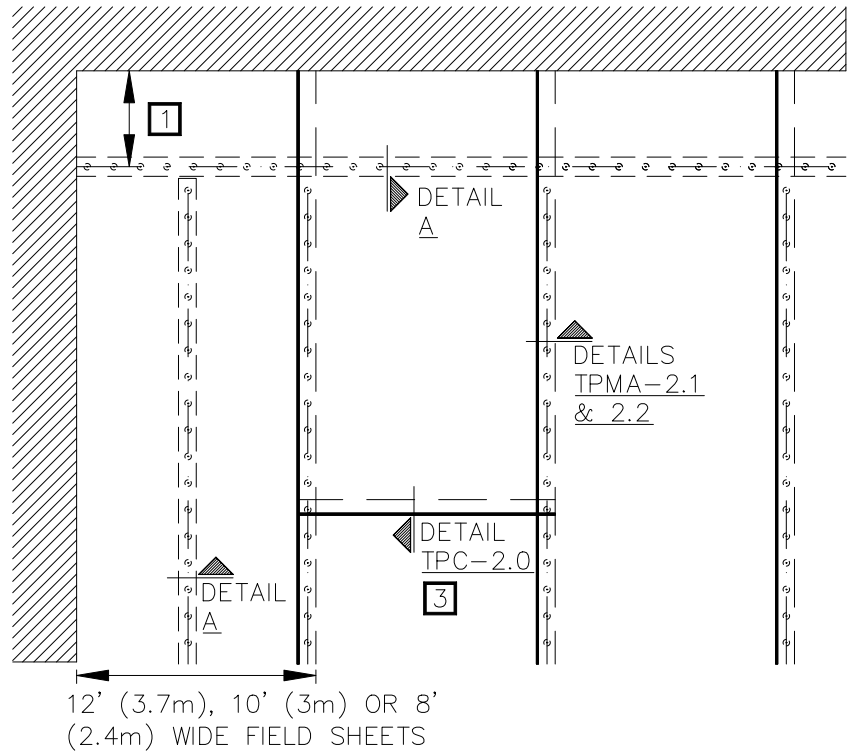
INSTALL PERIMETER SHEETS OVER THE ENTIRE OVERHANG (PROJECTION ROOF) AREA, EXTENDING ONTO THE MAIN ROOF DECK WHEN AT THE SAME LEVEL AS SHOWN.

LARGE OPENINGS OR LOADING DOCKS

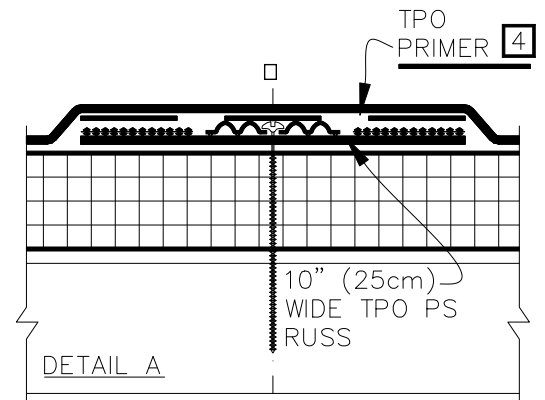


FOUR PERIMETER SHEETS CENTERED OVER LARGE OPENINGS

PERIMETER ZONES



TPO ONLY
(NOT FOR PVC)



NOTES:

1. QUICK-APPLIED RTS SHALL BE POSITIONED 5' (1.5m) TO 6' (1.8m) FROM THE PERIMETER EDGE WHEN USING 10' (3.5m) OR 12' (3.7m) WIDE TPO FIELD SHEETS. WHEN USING 8' (2.4m) WIDE TPO FIELD SHEETS, QUICK-APPLIED RTS SHALL BE POSITIONED 4' (1.2m) FROM THE PERIMETER EDGE.
2. REFER TO VERSICO SPECIFICATIONS FOR REQUIRED NUMBER OF PERIMETER SHEETS, SHEET WIDTH AND MEMBRANE FASTENING DENSITY.
3. END LAPS DO NOT REQUIRE MECHANICAL FASTENING AND SHALL BE OVERLAPPED 2" (5cm) MINIMUM. REFER TO THERMOPLASTIC DETAIL TPC-2.0.
4. TPO PRIMER MUST BE APPLIED TO THE BACK SIDE OF MEMBRANE SURFACE PRIOR TO ADHERING MEMBRANE TO PS RUSS.